



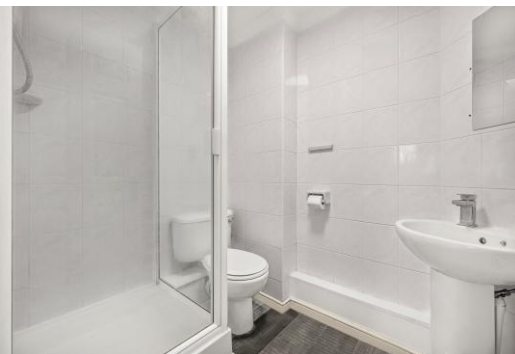
Meridian Place

London, E14

Asking Price £500,000

A 4th floor 2-bedroom 2 bathroom apartment in the well-located Meridian Place development. The apartment benefits from high ceilings in the reception, & a large private terrace, as well as a secure parking space.

CHESTERTONS



Meridian Place

London, E14

- 800sq ft 2-bedroom apartment with great outside space.
- 2 fully modernised bathrooms.
- Exceptional location in the heart of South Quay.
- Located within 200m of South Quay DLR station.
- Canary Wharf Jubilee Line & Elizabeth Line stations within 1km.
- Close to local amenities, shops, restaurants & takeaways & bars of Canary Wharf.
- Secure parking included with allocated parking spot.



A two-bedroom, two bathroom penthouse apartment set over the fourth floor of the popular Meridian Place development. Favourably situated on South Dock in South Quay and moments away from Canary Wharf.

The apartment benefits from a bright and spacious layout, modern interiors and a peaceful residential setting tucked away just off Marsh Wall. Residents enjoy excellent access to local cafés, restaurants, supermarkets and leisure facilities, while the nearby Thames pathways and green open spaces provide a welcome balance to city living.

The property comes with secure underground parking and is offered with an impending share of freehold and chain free. Meridian Place is superbly located for all the amenities that Canary Wharf has to offer, including its many bars, shops, restaurants and connection to Canary Wharf Underground (Jubilee Line). The DLR connection of South Quay is a walk across the street!

Tenure: Share of Freehold 970 years approx. remaining.

Service Charge: £5,413 pa approx.

Ground Rent: Peppercorn

Local Authority: Tower Hamlets

Council Tax Band: E

Score	Energy rating	Current	Potential
92+	A		
81-91	B		
69-80	C	81 B	82 B
55-68	D		
39-54	E		
21-38	F		
1-20	G		

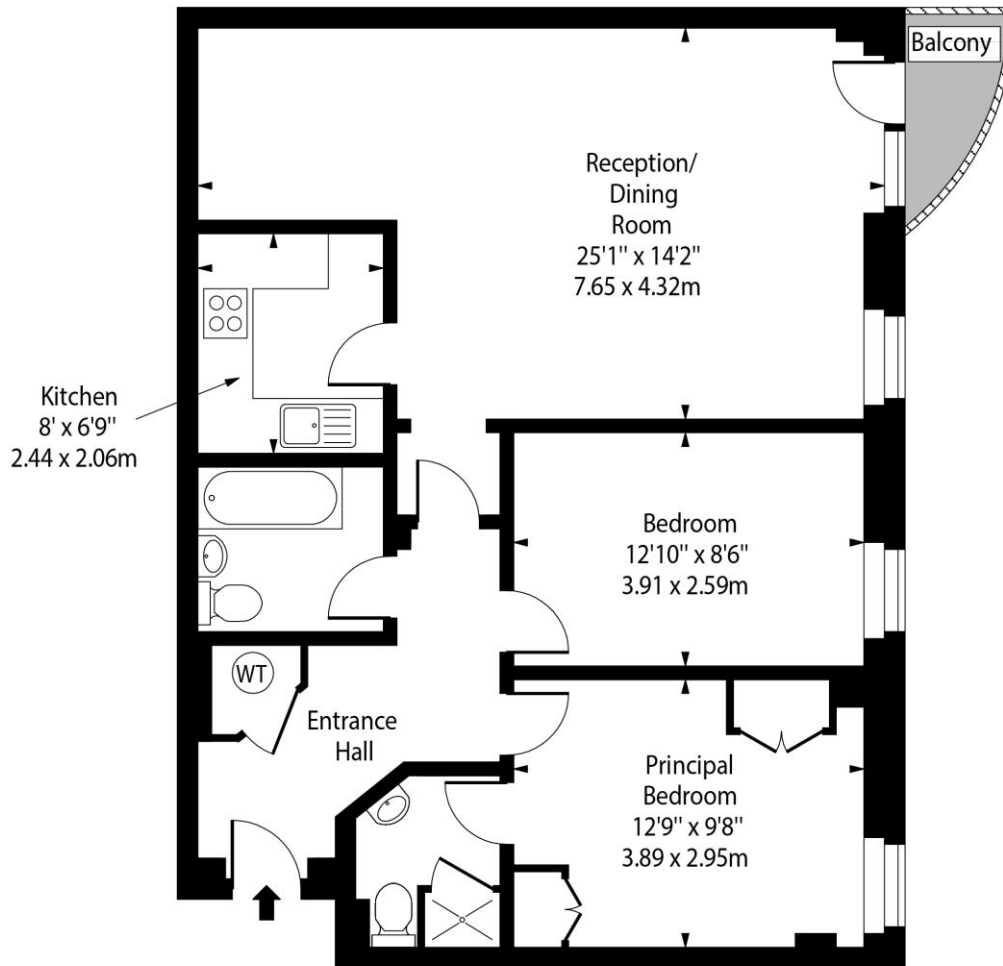
Chestertons Canary Wharf & Greenwich Sales

Harbour Island
 28 Harbour Exchange Square
 London
 E14 9GE
 canarywharf@chestertons.co.uk
 020 7510 8300
 chestertons.co.uk



Meridian Place, E14

○ - Ceiling Height



Fourth Floor

Approx Gross Internal Area 800 Sq Ft - 74.32 Sq M

Every attempt has been made to ensure the accuracy of the floor plan shown. However, all measurements, fixtures, fittings, and data shown are approximate interpretations and for illustrative purposes only. Measured according to the RICS. Not To Scale.

www.goldlens.co.uk
Ref. No. 031834K

