







NEW BUILD Frontline 3 Bed Townhouse

Murdeira

 3  3  205.74  Condo Fees ZERO

250,000 Euros

Directly facing a swimming cove called Beirona on Murdeira Bay, Sal, this frontline townhouse offers over 200 square metres of architect-designed, beautifully constructed new living accommodation at a very competitive price.

With jaw-dropping views of the ocean, coast and Monte Leao (Lion Mountain), this exclusive residence is tucked away to the northern end of the sleepy fishing and tourist village of Murdeira. It is the final building currently in Murdeira, with no through traffic, with a walled surround. As it forms the end of the cul-de-sac (with its own parking space), it is guaranteed privacy, peace and quiet.

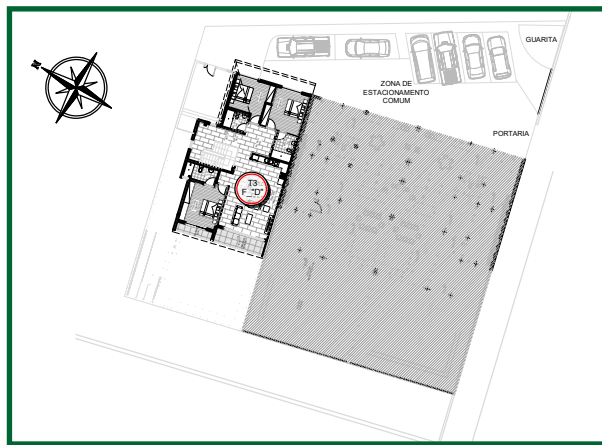
This is the upper of two townhouses so benefits from a lovely roof terrace affording stunning views. It has its own separate entrance, and stairs lead up to the living accommodation, arranged all on one level. There are stairs up to the roof terrace, which completes 58m² of outside space.

With high-end features such as marble tile, a beautiful fitted kitchen in high-gloss white, great insulation, luxury bathrooms and protective aluminium shutters, this is a state-of-the-art townhouse for permanent living or holidaymaking.

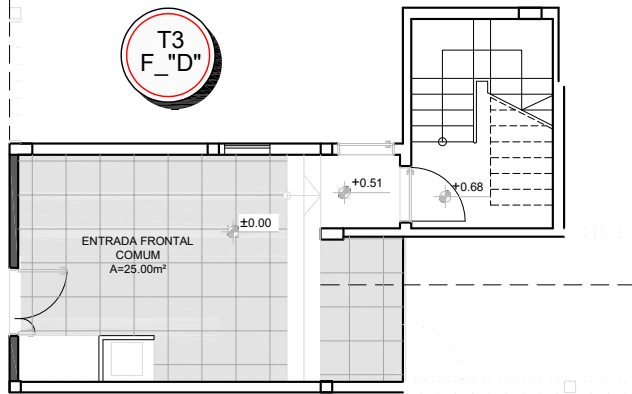
Easily sleeping 6 (or 8 with the addition of a sofa bed), the apartment features 2 ensuite bedrooms, each over 15m². The third bedroom is 14m² and is adjacent to a third cloakroom.

Unfurnished but including all appliances, electrics and light fittings, this stunning residence is ready for its first owners to put their own stamp on it.

Murdeira is a peaceful residential village lying just 6 kilometres south of Sal's international airport and 11 kilometres north of the pier at Santa Maria. Offering a quieter alternative to the bustle of Santa Maria, it has a couple of shops and restaurants, but has managed to hold on to its no shoes, no news lifestyle. Very popular with fisherfolk, snorkellers, divers and those who just enjoy the quiet life, it has several new developments and hotels coming soon.

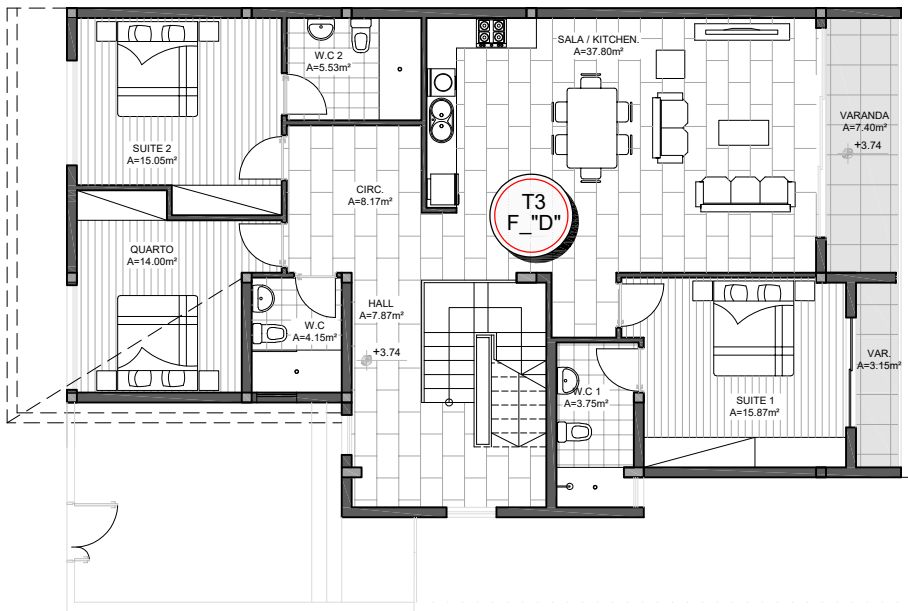






PLANTA DO RÉS-DO-CHÃO ENTRADA (FRACÇÃO - D)

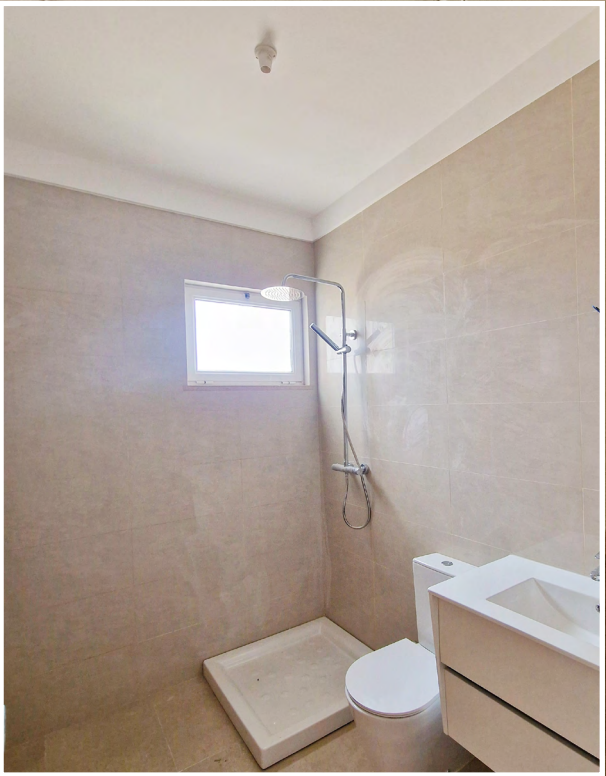
ESCALA: 1/100

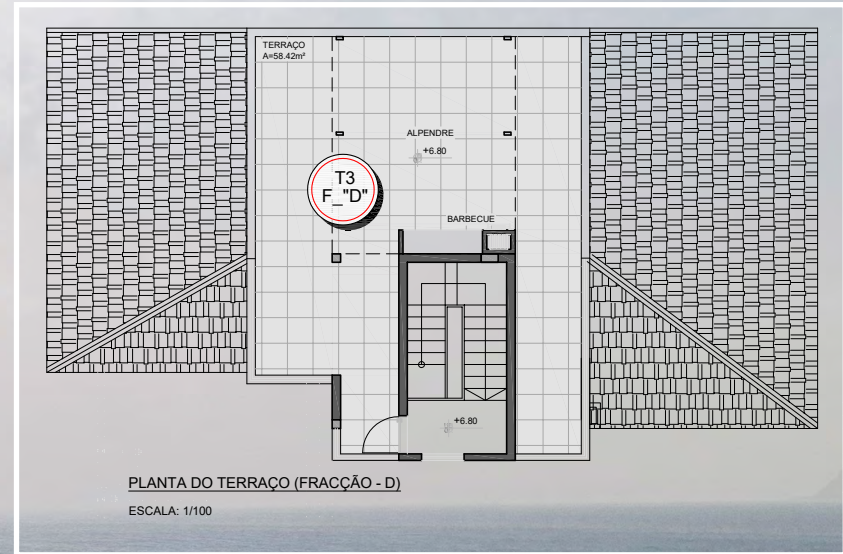


PLANTA MOBILADA DO 1º ANDAR (FRACÇÃO - D)

ESCALA: 1/100







WhatsApp +44 7779 591283
sales@homescasaverde.com
www.homescasaverde.com