



## 7 Bed Terraced House

Offers Over: £349,950

Rosebank, Kilmartin, by Lochgilphead, Argyll, PA31 8RQ

Rosebank presents as a truly versatile and charming stone-built family home, beautifully combining modern conveniences with original period features. Built around 1870, this well maintained mid-terraced property offers a unique living experience for a large family or income opportunity with an attached annex and an adjoining cottage, both equipped with their own kitchen, shower room, and bedroom. Central village location with scenic Kilmartin Glen views. Standout features of the property include high ceilings with intricate corning, ornate staircase and fireplaces, blending historical elegance with contemporary comforts, such as recently upgraded kitchens and bathrooms. With 340sq meters of flexible living spaces, the layout can adapt to various needs making it ideal for extended family life or income opportunities. Collectively comprising; Three lounges, three kitchens, seven double bedrooms, two ensuite shower rooms, one ensuite bathroom, family shower room and study spaces. The property benefits from recent double glazing, oil central heating with recent boiler, private courtyard parking, stone outbuildings, integral garage/workshop with plumbing and power, enclosed front gardens with veg patch and patio seating area. Highspeed broadband, 4G and digital television are available.

EPC rating E45 - Council Tax Band F.



  
**ARGYLL**  
Estate Agents

Main entrance Vestibule 3.48m x 2.09m

Timber entry door to pretty entrance vestibule with curved wall, window view to front, timber effect vinyl flooring, decorative corning, pendant lighting, coat hooks and space for furniture. Access to Annex and inner hallway.

Inner Hallway 5.10m x 2.33m

The main feature has to be the inviting staircase to the first floor landing with its impressive timber balustrade. Carpeted flooring, central heating radiator, wall panelling, feature pendant chandelier, socket points and storage cupboard with shelving.

Lounge/Diner 5.02m x 4.17m

Welcoming family room with dual windows to the front. Exposed wooden floorboards, space for lounge and dining furniture. Ornate fireplace (potential to be reinstated) with space for feature electric fire. Two inbuilt cupboards, pendant lighting and three central heating radiators.

Breakfasting Kitchen 4.48m x 2.51m

Modern wall and base units with plenty of storage options and worktop space. Window views to the rear courtyard. Stainless steel sink with mixer tap, space and plumbing for white goods, extractor hood, tiled splashbacks, pendant lighting, laminate flooring, space for table and chairs. Large inbuilt pantry cupboard with light and shelving.

First Floor hallway 3.40m x 2.31m

Inviting original staircase (carpeted to first floor). Mid level snug/storage area. First floor landing has impressive stained-glass effect domes above in Rose design complimented by intricate corning and the high ceilings. There are two walk in storage cupboards ideal for household linen or general storage, two large central heating radiator, pendant lighting, socket points and space for hallway furniture.

Bedroom One 5.10 x 4.15m

Natural light from the dual windows to the front and glen views beyond. Large double bedroom that could be utilised as a 2nd formal sitting room if desired. Original fireplace (potential to be reinstated), space for freestanding furniture, carpeted flooring, central heating radiator, feature pendant lighting, tv and socket points.

Bedroom Two 4.28m x 3.68m

Good sized double bedroom with elevated window view to the front and a rural backdrop. Space for freestanding bedroom furniture, central heating radiator, pendant lighting, carpeted flooring and socket points.

Bedroom Three 3.67m x 3.29m

Good sized double bedroom with ensuite facilities and elevated window view to the front. Space for freestanding bedroom furniture, central heating radiator, decorative corning, pendant lighting, carpeted flooring and socket points.

Ensuite Shower Room 2.02m x 1.03m

Recently installed three piece suite with thermostatic shower enclosure, WHB and WC. Marble effect wet wall splashbacks and wall tiling. Wall mounted towel holder, mirror and toothbrush holder. Opaque window to rear, laminate flooring, extractor fan and spotlight.

Bedroom Four 4.01m x 3.88m

Good sized double bedroom with ensuite facilities and window view to the side. Decorative corning, space for freestanding bedroom furniture, central heating radiator, pendant lighting, carpeted flooring and socket points.

Ensuite Bathroom 2.39m x 1.69m

Contemporary three piece suite with curved bath, inbuilt vanity unit with WHB and WC with concealed cistern. Designer wall tiling in neutral stone, heated towel rail, wall mounted towel holder. Laminate flooring, extractor fan and spotlighting.

Bedroom Five 4.31m x 2.46m

Double bedroom with double inbuilt wardrobes. Elevated window views to rear courtyard and country scenes beyond. Laminate flooring, central heating radiator, pendant light and socket points. Space for freestanding furniture.

Family Shower Room 2.37m x 1.84m

Contemporary three piece suite with glazed walk in thermostatic shower enclosure, inbuilt vanity unit with WHB and WC with concealed cistern. Marble effect wall tiling and wet wall splashbacks. Heated towel rail, laminate flooring, extractor fan and spotlighting. Semi opaque window to rear.

Annex (accessed from main house Vestibule or rear Courtyard)

Annex Lounge 5.17m x 4.43m

Dual aspect windows to the front and rear with carpeted staircase to annex bedroom. Space for freestanding lounge furniture, laminate flooring, inbuilt book shelving with cupboards beneath, understairs cupboard, space for feature electric fireplace, central heating radiator, pendant lighting and socket points.

Annex attic Bedroom 4.39m x 4.37m

Carpeted stairs to double bedroom with space for freestanding furniture, laminate flooring, pendant lighting and socket points. Window views to rear courtyard and countryside beyond. Central heating radiator and electric panel heater.

Annex Hallway 2.76m x 0.96m

Rear access door from courtyard or from lounge. Wall mounted central heating rail heater, laminate flooring, pendant light and stairs to attic study.

Annex Kitchen 2.97m x 1.85m

Recent matching wall and base units with ample storage options and worktop space. Window views to front gardens and hillside beyond. Stainless steel sink with mixer tap, space for white goods, modern extractor hood, textures stone wall tiling, spotlighting, socket points and laminate flooring.

Annex Shower Room 2.36m x 1.18m

Recent three piece suite with thermostatic shower enclosure, inbuilt WHB with vanity storage and WC. Moroccan style tiling, heated towel rail, toilet tissue holder, opaque window to rear, laminate flooring, extractor fan and pendant lighting.

Annex Attic Study 3.68m x 2.97m

Accessed by a fixed timber ladder, this light and bright space could make an ideal study or additional bedroom if required. Velux to rear, fireplace, laminate flooring and wall lighting.

Cottage (attached with private access from front gardens)

Cottage Lounge/Kitchen 5.76m x 4.78m

Open plan welcoming room with front garden access and dual aspect window views to front and rear. Kitchen is modern with matching wall and base units and ample worktops. Space for white goods, inbuilt 4 zone hob, mid level oven/grill and microwave. Extractor fan, stainless steel sink with swan neck mixer tap, pendant/spot lighting and laminate flooring. Lounge area is carpeted with space for furniture, feature pendant lighting, tv point and socket points. Carpeted staircase with wooden balustrade to upper bedroom.

Cottage Bedroom 6.46m x 3.58m

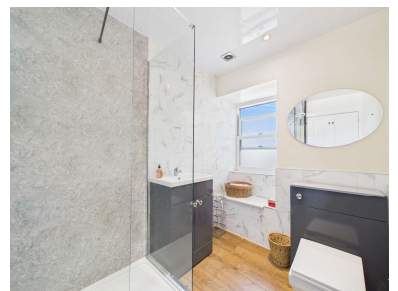
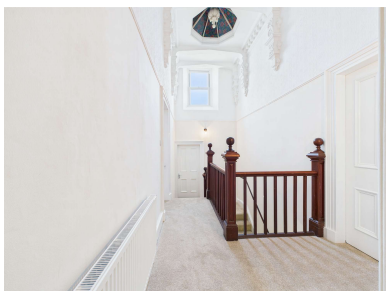
Attic room with dressing area and access to ensuite shower room. Velux to front with glen views, inbuilt cupboard, carpeted flooring, spotlighting, socket points, eves storage cupboard and space for freestanding furniture. Dressing area is carpeted with dual Velux to the rear. Space for furniture and storage items, eves cupboard and spotlighting.

Ensuite Shower Room 2.67m x 1.78m

Three piece suite with thermostatic shower enclosure, avocado WHB and WC. Tiled splashbacks, Velux to front with elevated rural views, laminate flooring, extractor fan and flush ceiling light, and eves cupboard.

Outside

The rear courtyard is accessed through a side lane from the main road passing the property. Off road parking for 2/3 vehicles, stone outbuildings with 4 separate storage spaces with power and light. Concrete base and tiled roof. Outside tap and small outdoor seating area for Annex. Integral single garage/workshop accessed from courtyard by double doors or pedestrian PVC door to front garden. The workshop has a concrete base, power, lighting and plumbing for white goods. Front gardens are accessible through a wooden gate and are enclosed with fencing and hedging. Lawn area with many surrounding annual flowering perennials such as clematis, mombretia, honeysuckle and there are apple and pear trees in addition. There are numerous raised beds for veg plantation. Stone chipped borders with Roses and climbers are eye catching features and the pathways are laid to slabs.



At **Argyll Estate Agents** we pride ourselves on offering a professional proactive service to all of our customers. Whether you are buying or selling we are here to help you achieve the best possible results with the minimum of fuss. With years of sales experience, we have developed a modern approach to the property market with flexible working hours and a strong emphasis on technology. Combine this with a national online presence and our local knowledge then you have a winning formula. Thinking of selling your property? We will give you an honest and accurate summary of current market conditions and clearly explain the ins and outs of the Home Report. We will also inform you of what we at Argyll Estate Agents provide in the way of service to ensure your property is marketed professionally and effectively allowing you to realise the full market potential.

If you are thinking of buying or selling and are unsure of the process please feel free to give us a call to have a no obligation chat on how we can help you get started.

### What's included

Your property is displayed in our prominent High Street windows in Oban and Lochgilphead  
We advertise in all major property websites more than any other Agent in Argyll  
You only pay our sales fee from the proceeds of your sale on the day of completion  
Valuable local knowledge with all the services offered by a city based agent  
Wide-angle photography as standard  
Instruction and support completing your Home Report  
Agreeing on your proactive marketing strategy  
The production of property particulars and floorplan  
Regular email alerts tailored to motivated buyers on our extensive mailing list  
Unique property matching service with buyers from around the UK and abroad  
Social media posts on Facebook, Twitter, Instagram and Youtube  
Erection of a standard for sale board at your property  
All postage, stationary and telephone charges  
Liaising with both Solicitors through to sale completion

### Marketing upgrades available on request

Highly rated professional photographers as used by the big brands  
Licensed aerial photography (subject to location and weather)  
Qualified accompanied viewings carried out  
360 Virtual walk-through tours  
Hard copy glossy brochures (minimum quantity 30 copies)  
Local and National press advertising (at preferential rates)

We can match any product or service offered by any UK estate agent. Simply let us know your requirements and we will make arrangements with one of the many contacts we have in the industry.

**Head Office:**  
20 Argyll Street, Lochgilphead  
Argyll PA31 8NE

**Lochgilphead area:** 01546 607045 / **Oban area:** 01631 561130  
**Mobile:** 07771 541578 **Email:** [mail@argyllestateagents.com](mailto:mail@argyllestateagents.com)



**ARGYLL**  
**Estate Agents**



We have prominent window displays in the main thoroughfares of both Lochgilphead and Oban. Our office is open by appointment Mon to Friday from 9am until 5pm. We can help with all aspects of property sales. We have local and National Solicitors, Mortgage Brokers and Surveyors ready to help offer you detailed quotations and give free impartial advice with no obligation to proceed. Why take the risk and pick a name off the internet or phonebook? Getting the right advice at the start can save you time and money in the long run. You do not need to buy your property through us for this service. It is free to everyone looking for a tried and trusted property professional. Simply complete the 'Contact Professionals' form on our website and we will pass on your details and requirements.