

16 The  
Limes London  
Road  
Halesworth



# 16 The Limes London Road

## Guide Price £110,000

### The double-bedroom ground-floor flat...

A charming and well-presented ground floor apartment situated within The Limes, a popular and well-maintained development exclusively for the over 60's. Conveniently located close to the heart of Halesworth, this lovely home offers comfortable and independent living within a welcoming community setting.

The property features a bright sitting room with pleasant views of the communal gardens, a well-equipped kitchen, a comfortable double bedroom, and a modern shower room. Residents also benefit from the use of attractive shared gardens and communal facilities, along with on-site support and secure entry systems for peace of mind.

The Limes enjoys an excellent position within easy reach of Halesworth's charming town centre, with its range of independent shops, cafés, and local amenities. The beautiful Suffolk coast — including the popular seaside towns of Southwold and Walberswick — lies just a short drive away, offering the best of both countryside and coastal living.

This delightful apartment is ideal for those seeking a relaxed lifestyle with the convenience of town and coast nearby.

### Agents notes...

A pre-recorded walkaround tour is available for this property.

EPC to follow

No pets allowed

Each owner of a property at The Limes owns 1/30 of the freehold of the entire development through The Residents Association, which owns the freehold.

Local Authority  
East Suffolk

Council Tax Band A

EPC Rating D



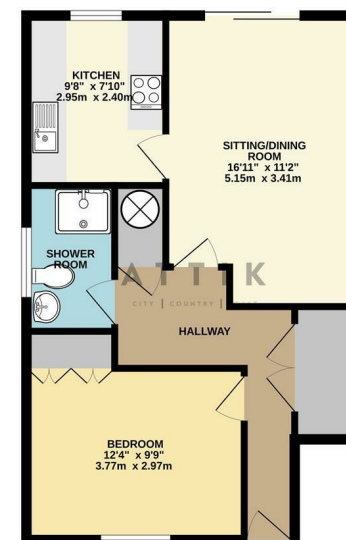
Contact

01986 899532

[enquiries@attikccc.co.uk](mailto:enquiries@attikccc.co.uk)

[www.attikccc.co.uk](http://www.attikccc.co.uk)

GROUND FLOOR  
541 sq.ft. (50.2 sq.m.) approx.



TOTAL FLOOR AREA: 541 sq.ft. (50.2 sq.m.) approx.

While every attempt has been made to ensure the accuracy of the foregoing information, measurements of plots, sections, rooms and any other items are approximate and no responsibility is taken for any error, omission or misstatement. This plan is for illustrative purposes only and should not be used as a basis for any prospective purchase. The services, systems and appliances shown have not been tested and no guarantee can be given as to their operation or efficiency. See to it.

Made with floorplan 12/25