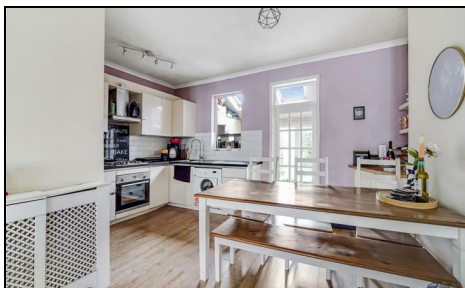


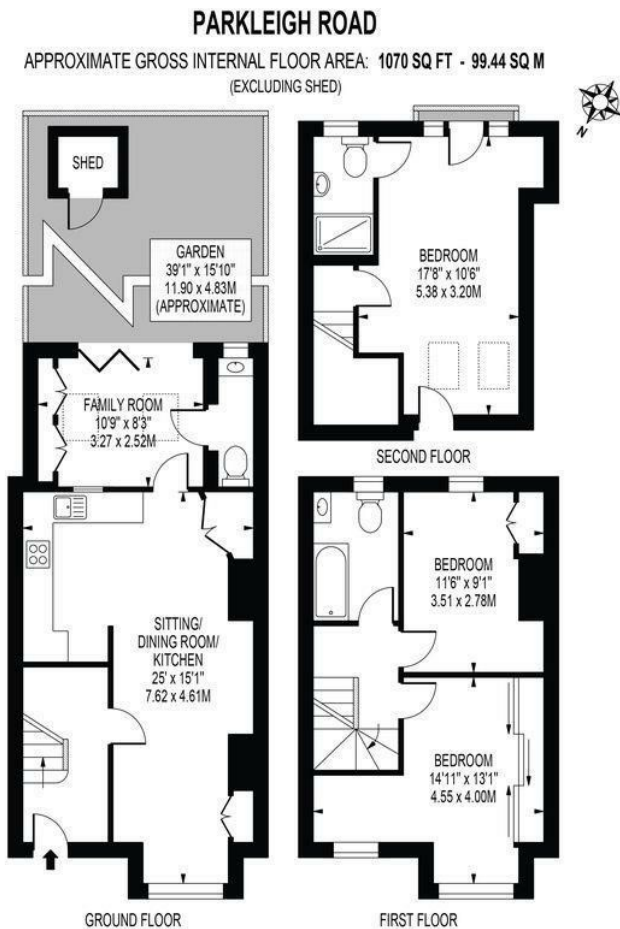
## Parkleigh Road London, SW19 3BU

**£2,750 PCM**



THREE BEDROOM, TWO BATHROOM terrace house, located 0.5 miles from South Wimbledon tube (Northern line) and close to Morden Road tram stop. The property features an open plan kitchen/reception room plantation shutters, and a ground floor WC. Two bedrooms are located on the first floor with the family bathroom, with the principle bedroom with an ensuite shower and Juliet balcony on the second floor. EPC band C. Council tax band D.

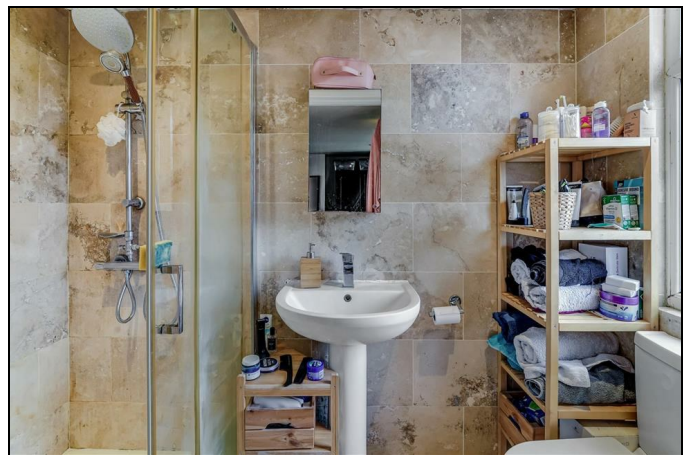




FOR ILLUSTRATION PURPOSES ONLY

THIS FLOOR PLAN SHOULD BE USED AS A GENERAL OUTLINE FOR GUIDANCE ONLY AND DOES NOT CONSTITUTE IN WHOLE OR IN PART AN OFFER OR CONTRACT.  
ANY INTENDING PURCHASER OR LESSEE SHOULD SATISFY THEMSELVES BY INSPECTION, SEARCHES, ENQUIRIES AND FULL SURVEY AS TO THE CORRECTNESS OF EACH STATEMENT.  
ANY AREAS, MEASUREMENTS OR DISTANCES QUOTED ARE APPROXIMATE AND SHOULD NOT BE USED TO VALUE A PROPERTY OR BE THE BASIS OF ANY SALE OR LET.

- Three bedroom mid terrace house
- Two bathrooms
- Ground floor WC
- Plantation shutters
- Pets considered
- First months rent in advance
- Five weeks security deposit
- Holding deposit = one weeks rent
- EPC band C
- Council tax band D



Energy Efficiency Rating		
	Current	Potential
Very energy efficient - lower running costs		
(92 plus) <b>A</b>		
(81-91) <b>B</b>		84
(69-80) <b>C</b>	70	
(55-68) <b>D</b>		
(39-54) <b>E</b>		
(21-38) <b>F</b>		
(1-20) <b>G</b>		
Not energy efficient - higher running costs		
England & Wales		
EU Directive 2002/91/EC		