

HOLMLEE

Chase Grove, Waltham Chase, SO32 2LF

Asking Price £389,950

WELLER
PATRICK



PROPERTY FEATURES

A well-presented, two bedroom detached bungalow in the popular village of Waltham Chase

Lounge • Kitchen • Conservatory • Shower Room • Two Double Bedrooms

Large Garden • Driveway Parking • Garage • No Forward Chain • Viewing Recommended



DESCRIPTION

Offered with no forward chain is this detached and well presented two bedroom bungalow situated in a popular location within the sought after semi rural village of Waltham Chase.

The accommodation briefly comprises two double bedrooms, entrance hall, sitting room, kitchen, conservatory and shower room.

outside a particular feature is the large rear garden and detached garage with driveway parking.

Waltham Chase benefits from a convenient location between Bishops Waltham and Wickham, both of which offer a wide range of amenities such as shops, restaurants, bakeries, coffee shops and chemists.

Within Waltham Chase itself, you will find a convenience store, village hall, and a highly regarded primary school. Secondary education can be found in the nearby village of Swanmore.

For those who commute, major cities such as Southampton, Winchester, Fareham, and Portsmouth are easily accessible by road. Additionally, rail services to London can be accessed from Petersfield, Winchester, and Botley.

Viewing is recommended.

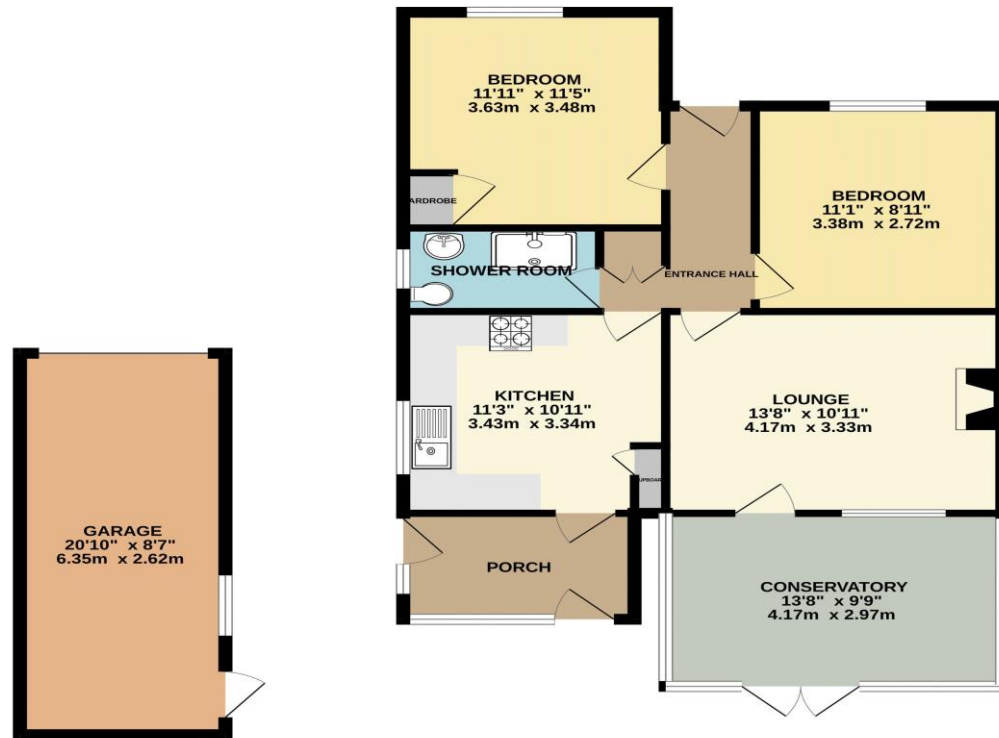
Holmlee
 Chase Grove
 Waltham Chase
 SO32 2LF



DIRECTIONS

From Bishops Waltham take the B2177 to Waltham Chase. On entering the village proceed through the traffic lights and then turn first right into Chase Grove. Follow the road round to the right and the property can be found on the left.

GROUND FLOOR



Whilst every attempt has been made to ensure the accuracy of the floorplan contained here, measurements of doors, windows, rooms and any other items are approximate and no responsibility is taken for any error, omission or mis-statement. This plan is for illustrative purposes only and should be used as such by any prospective purchaser. The services, systems and appliances shown have not been tested and no guarantee as to their operability or efficiency can be given.
 Made with Metropix G2024

Particulars amended 16th March 2026

LOCAL AUTHORITY AND SERVICES

Winchester City Council

Council tax band D

Services Mains electricity, gas, water & drainage

VIEWINGS

By appointment through Weller Patrick.
 Tel: 01489 893555

Energy Efficiency Rating		Current	Potential
<i>Very energy efficient - lower running costs</i>			
(92-100)	A		
(81-91)	B		83
(69-80)	C		
(55-68)	D	81	
(39-54)	E		
(21-38)	F		
(1-20)	G		
<i>Not energy efficient - higher running costs</i>			
England, Scotland & Wales		EU Directive 2002/91/EC	

Address:
 Holmlee