



2 The Mount Main Road, Ansty
Coventry

Offers Over **£305,000**



**SHELDON
BOSLEY
KNIGHT** LAND AND
PROPERTY
PROFESSIONALS

2 The Mount Main Road

Ansty, Coventry

This unique and beautifully presented three bedroom home, set in the sought after village of Ansty is now available to the market, surrounded by fields in a beautiful and quiet location.

Ansty is a popular village set just a stones throw from Coventry, and the property is surrounded by open fields and countryside views, giving you a truly magical and private feel to come home and relax to. Located on the banks of Oxford Canal and being part of the land once owned by Lady Godiva, the village is steeped in history.

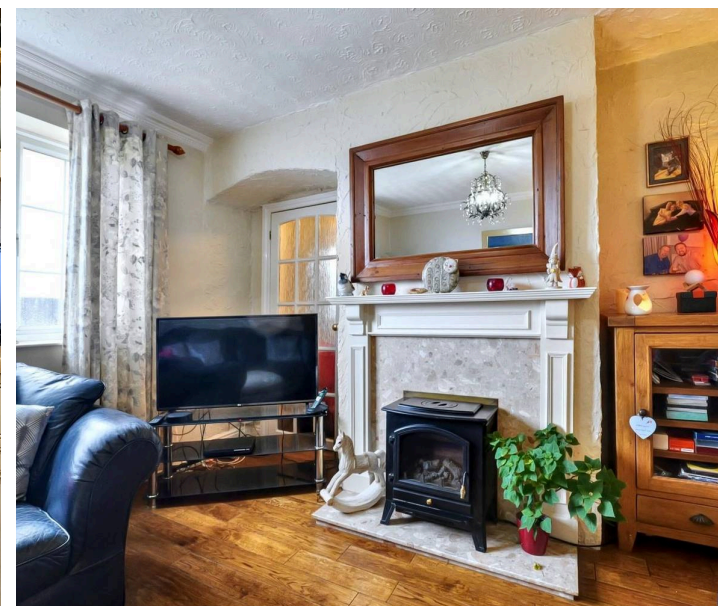
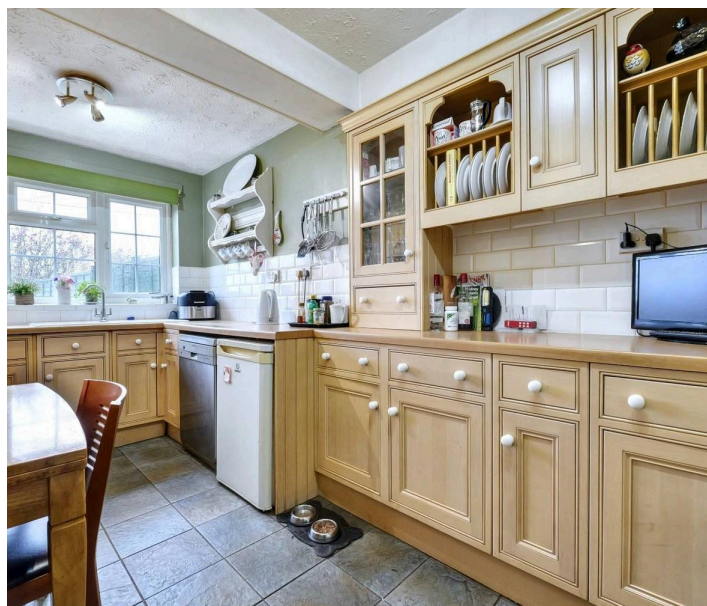
The accommodation comprises of a spacious entrance dining area, following through into the hallway with stairs ascending to the first floor, a fully fitted kitchen/breakfast room, utility room, WC and homely lounge with log burner. The property also benefits from a gorgeous conservatory which looks out onto the stunning field views. Upstairs the property offers three double bedrooms and a family bathroom with a large corner bath, as well as ample storage!

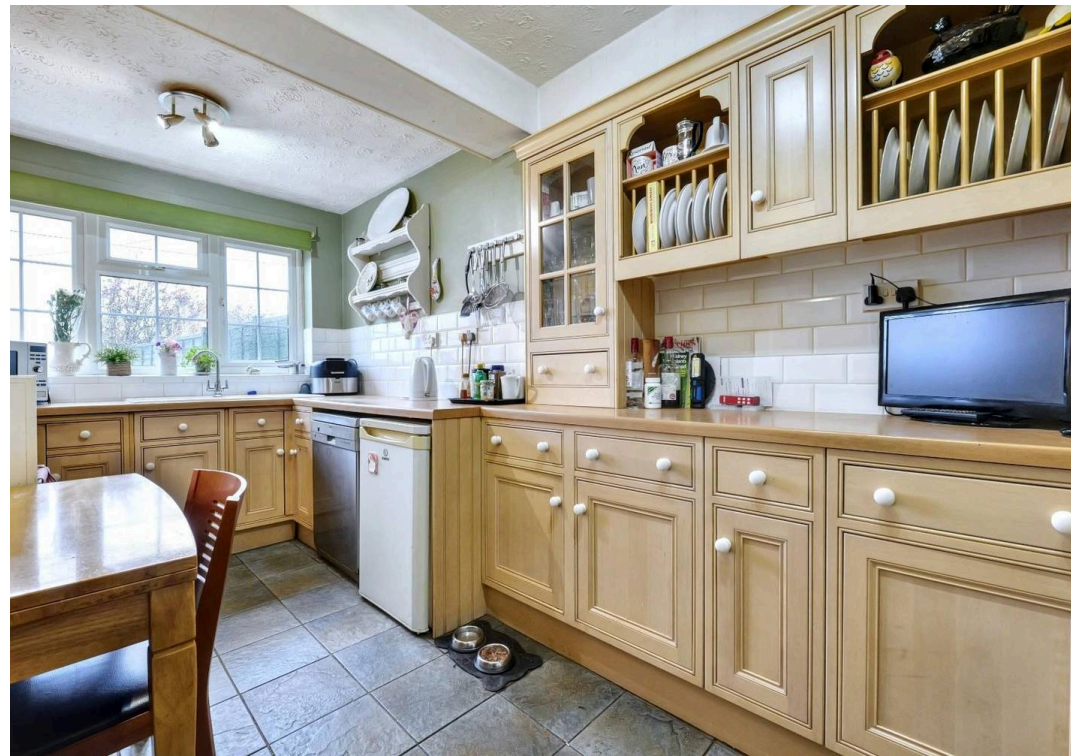
Externally this home boasts amazing front and rear gardens, as well as a driveway for up to three vehicles. This beautiful property is your new forever home, get in touch with Sheldon Bosley Knight Coventry on 024 7663 5555.

Council Tax band: C

Tenure: Freehold

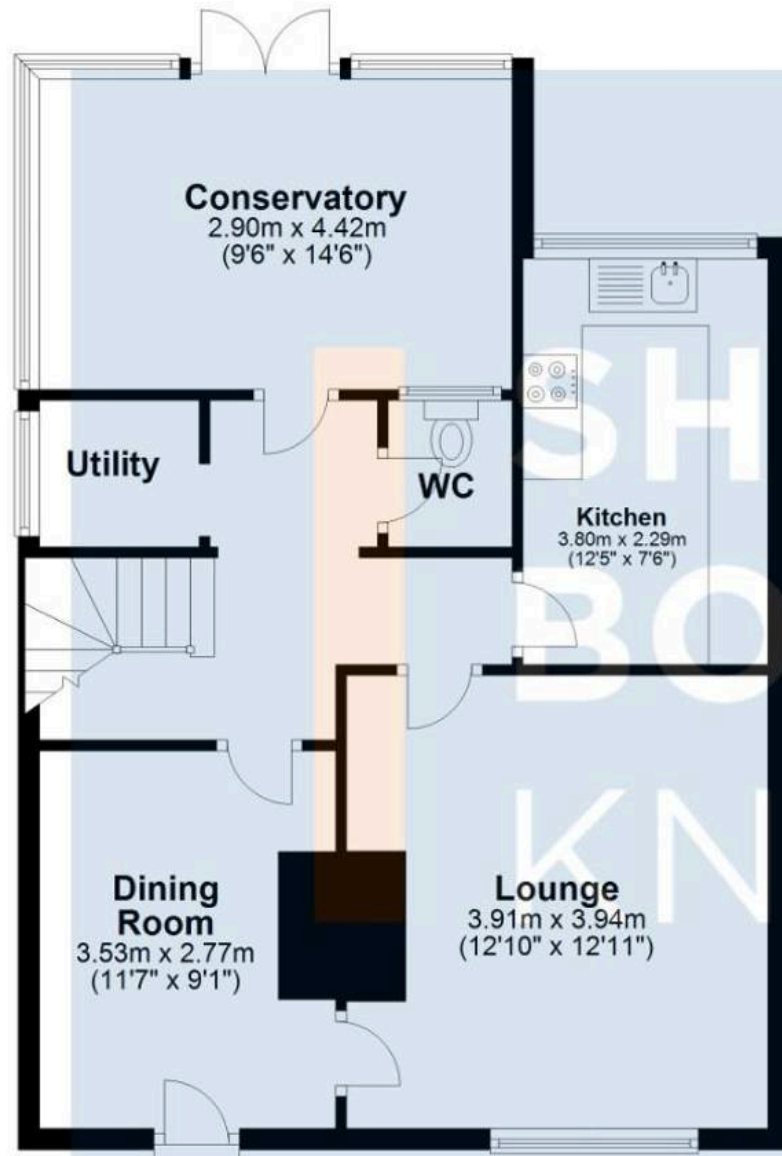
- Versatile living space
- Beautifully presented three bed semi-detached home
- Sought After Village Location





Ground Floor

Approx. 59.0 sq. metres (634.6 sq. feet)



First Floor

Approx. 46.5 sq. metres (500.3 sq. feet)



Total area: approx. 105.4 sq. metres (1134.9 sq. feet)

All efforts have been made to ensure that the measurements on this floorplan are accurate however these are for guidance purposes only.
Plan produced using PlanUp.



Sheldon Bosley Knight Nuneaton

Sheldon Bosley Knight, 39 Newdegate Street, Nuneaton - CV11 4ER

02476374949 • nuneaton@sheldonbosleyknight.co.uk • www.sheldonbosleyknight.co.uk/