
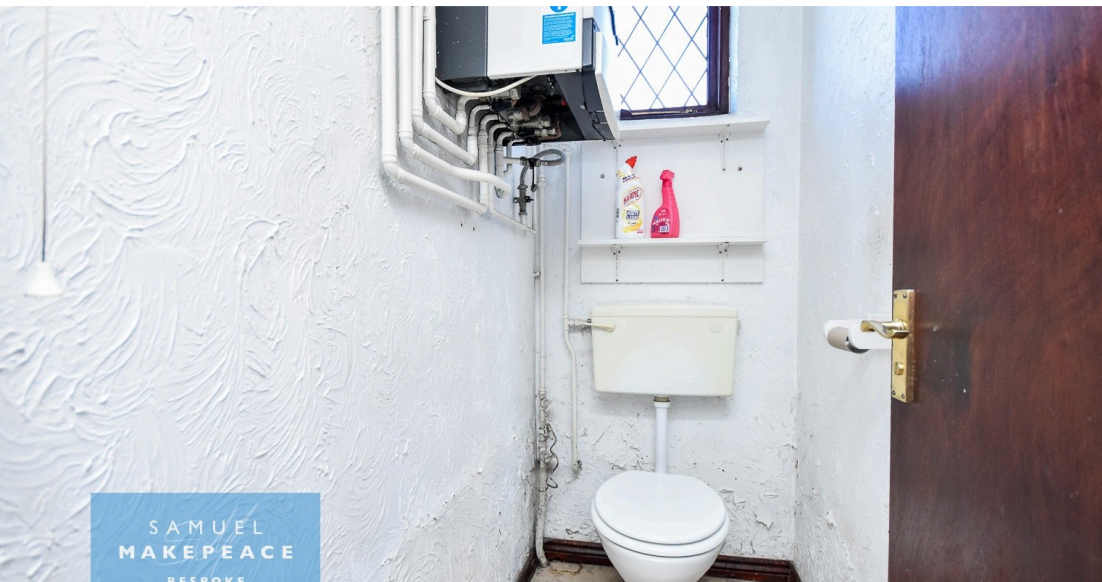
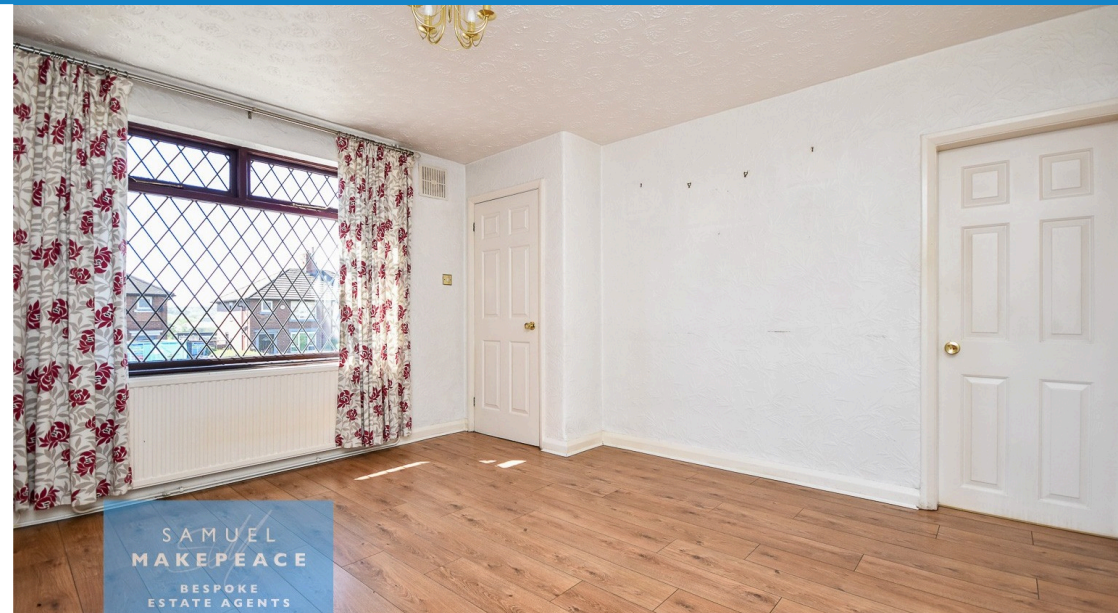




 **2**  
Bedrooms

 **1**  
Bathroom

 **1**  
Reception



- EXTENSIVE DRIVEWAY FOR MULTIPLE VEHICLES
- SPACIOUS KITCHEN
- NO CHAIN!
- TWO DOUBLE BEDROOMS
- HUGE REAR GARDEN
- BRICK BUILT WORKSHOP
- PERFECT FOR FIRST TIME BUYERS
- IDEAL BUY TO LET PROPERTY
- POTENTIAL TO MAKE A 3RD BEDROOM
- DOWNSTAIRS WC



A WIN-WIN opportunity has arisen, step onto Sherwin Road and discover a home that's ready to reward your vision. This well-maintained home presents an excellent opportunity for buyers looking to put their own stamp on a property, and is sold with NO CHAIN! While it would benefit from some modernisation, it has been carefully looked after over the years and offers a solid foundation for a comfortable family home.

The ground floor features a welcoming lounge complete with useful under-stairs storage, providing both practicality and space. To the rear, a generously sized kitchen offers plenty of room for dining and entertaining, complemented by a convenient downstairs WC. Upstairs, the property boasts two well-proportioned double bedrooms along with a family bathroom, making it ideal for small families, couples, or investors alike.

Externally, the property truly shines. To the front, a driveway provides off-road parking for multiple vehicles. The rear garden is equally impressive, offering a large lawn area, a paved patio perfect for outdoor seating, and an outdoor tap for convenience. A standout feature is the brick-built workshop, fully equipped with electricity—ideal for hobbies, storage, or home projects.

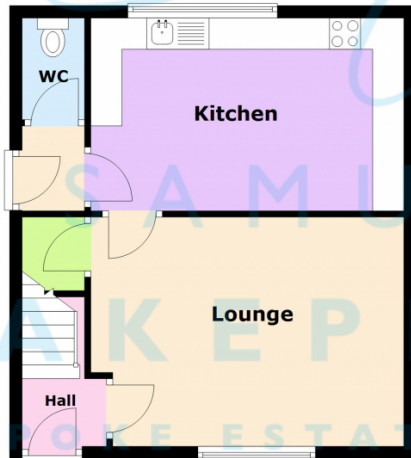
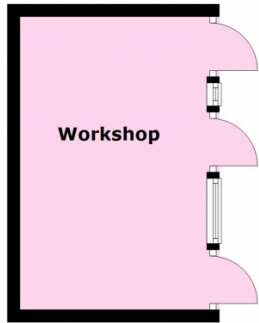
With great potential and desirable outdoor space, this property is a fantastic opportunity to create a home tailored to your tastes. We know this one won't be around for long, contact Samuel Makepeace Bespoke Estate Agents today to secure your viewing!

**Disclaimer:**

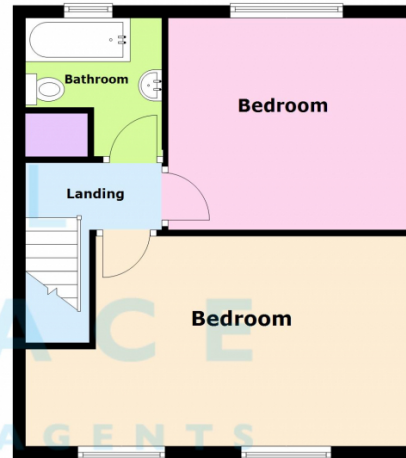
All property particulars are provided in good faith and are believed to be accurate to the best of our knowledge at the time of publication. Samuel Makepeace (Newcastle & Stoke) Ltd t/a Samuel Makepeace Bespoke Estate Agents cannot accept any responsibility for any errors, omissions, or misstatements. Prospective purchasers are advised to verify the details independently and should not rely solely on the information provided when making decisions. These particulars remain the property of Samuel Makepeace Bespoke Estate Agents Stoke on Trent, Newcastle Under Lyme & Alsager.



Ground Floor



First Floor



Total area: approx. 98.1 sq. metres (1056.4 sq. feet)

Floorplans are provided as a guide only. All measurements are not to be relied upon. To confirm any measurements and layouts you must check yourself. Samuel Makepeace Bespoke Estate Agents do not accept any liability for the accuracy of this.  
Plan produced using PlanUp.



Scan me for more info

