



Connells

Crescent Close
Market Harborough

Crescent Close Market Harborough LE16 7JH

for sale guide price
£240,000



Property Description

Tucked away in a quiet cul-de-sac, this well-presented property offers a wonderful opportunity for buyers seeking a home in the highly desirable town of Market Harborough. With a practical layout and inviting atmosphere, it is ideal for families, professionals, or downsizers looking for a balance of comfort and convenience.

Situated in a highly regarded residential area of Market Harborough. Just a short distance from local shops, cafes, restaurants and leisure facilities. Well-placed for excellent primary and secondary schools nearby. Superb transport links, including Market Harborough train station (direct services to London St Pancras). Easy road access to A6, A14 and M1, making it a great choice for commuters. Surrounded by open countryside, offering scenic walks and outdoor activities

A home in Crescent Close combines peaceful living with fantastic access to everything Market Harborough has to offer - an opportunity not to be missed.

Auctioneer's Comments

This property is offered through Modern Method of Auction. Should you view, offer or bid your data will be shared with the Auctioneer, iamsold Limited. This method requires both parties to complete the transaction within 56 days, allowing buyers to proceed with mortgage finance (subject to lending criteria, affordability and survey).

The buyer is required to sign a reservation

agreement and make payment of a non-refundable Reservation Fee of 4.5% of the purchase price including VAT, subject to a minimum of £6600.00 including VAT. This fee is paid in addition to purchase price and will be considered as part of the chargeable consideration for the property in the calculation for stamp duty liability. Buyers will be required to complete an identification process with iamsold and provide proof of how the purchase would be funded.

The property has a Buyer Information Pack containing documents about the property. The documents may not tell you everything you need to know, so you must complete your own due diligence before bidding. A sample of the Reservation Agreement and terms and conditions are contained within this pack. The buyer will also make payment of no more than £349 inc. VAT towards the preparation cost of the pack. Please confirm exact costs with the auctioneer.

The estate agent and auctioneer may recommend the services of other providers to you, in which they will be paid for the referral. These services are optional, and you will be advised of any payment, in writing before any services are accepted. Listing is subject to a start price and undisclosed reserve price that can change.

Lounge

12' 8" x 12' 10" (3.86m x 3.91m)

UPVC double-glazed bay window to front aspect, electric feature fireplace, under stairs storage cupboard, TV point & radiator.

Kitchen

15' 9" max x 10' 5" (4.80m max x 3.17m)

Utility Room

Bedroom One

10' 3" x 13' (3.12m x 3.96m)

Bedroom Two

10' 5" x 8' 9" (3.17m x 2.67m)

Bedroom Three

7' 2" x 6' 8" (2.18m x 2.03m)

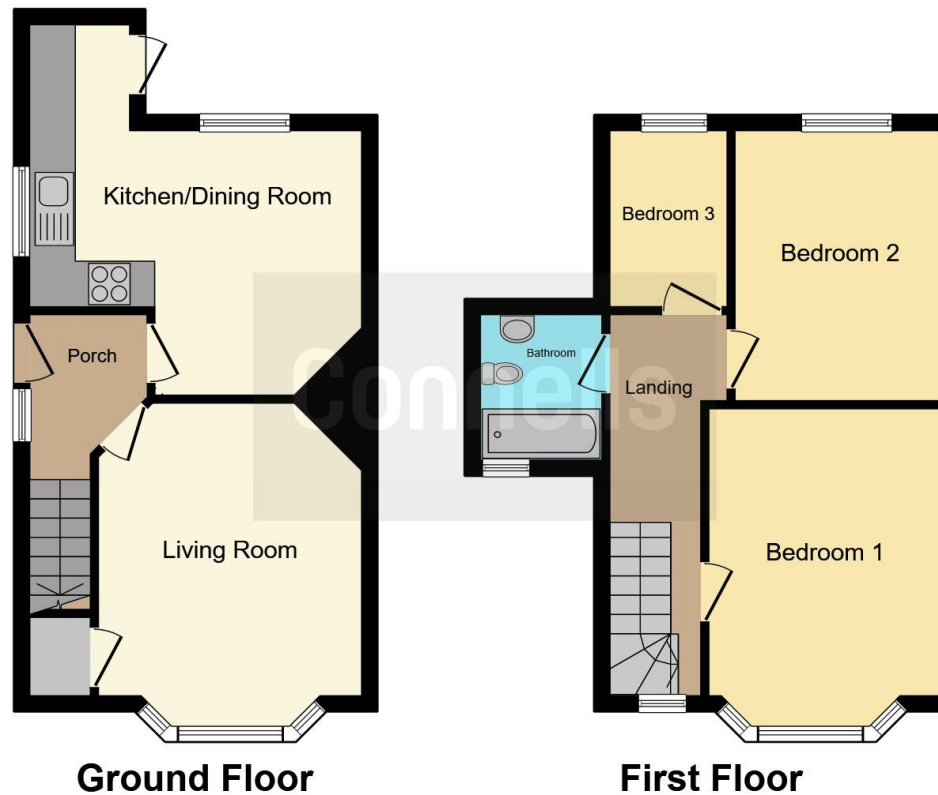
Bathroom

Bath/WC/Basin









This floor plan is for illustrative purposes only. It is not drawn to scale. Any measurements, floor areas (including any total floor area), openings and orientation are approximate. No details are guaranteed, they cannot be relied upon for any purpose and they do not form part of any agreement. No liability is taken for any error, omission or misstatement. A party must rely upon its own inspection(s). Powered by www.focalagent.com

To view this property please contact Connells on

T 01858 465 921
E marketharborough@connells.co.uk

11 St. Marys Road
 MARKET HARBOROUGH LE16 7DS

EPC Rating: D Council Tax
 Band: B

Tenure: Freehold

view this property online connells.co.uk/Property/MKH308148



1. MONEY LAUNDERING REGULATIONS Intending purchasers will be asked to produce identification documentation at a later stage and we would ask for your co-operation in order that there will be no delay in agreeing the sale. 2. These particulars do not constitute part or all of an offer or contract. 3. The measurements indicated are supplied for guidance only and as such must be considered incorrect. Potential buyers are advised to recheck measurements before committing to any expense. 4. We have not tested any apparatus, equipment, fixtures, fittings or services and it is in the buyers interest to check the working condition of any appliances.

Connells Residential is registered in England and Wales under company number 1489613, Registered Office is Cumbria House, 16-20 Hockliffe Street, Leighton Buzzard, Bedfordshire, LU7 1GN. VAT Registration Number is 500 2481 05.

See all our properties at www.connells.co.uk | www.rightmove.co.uk | www.zoopla.co.uk

Property Ref: MKH308148 - 0005