



Fleet Street, EC4Y

£775 Per week

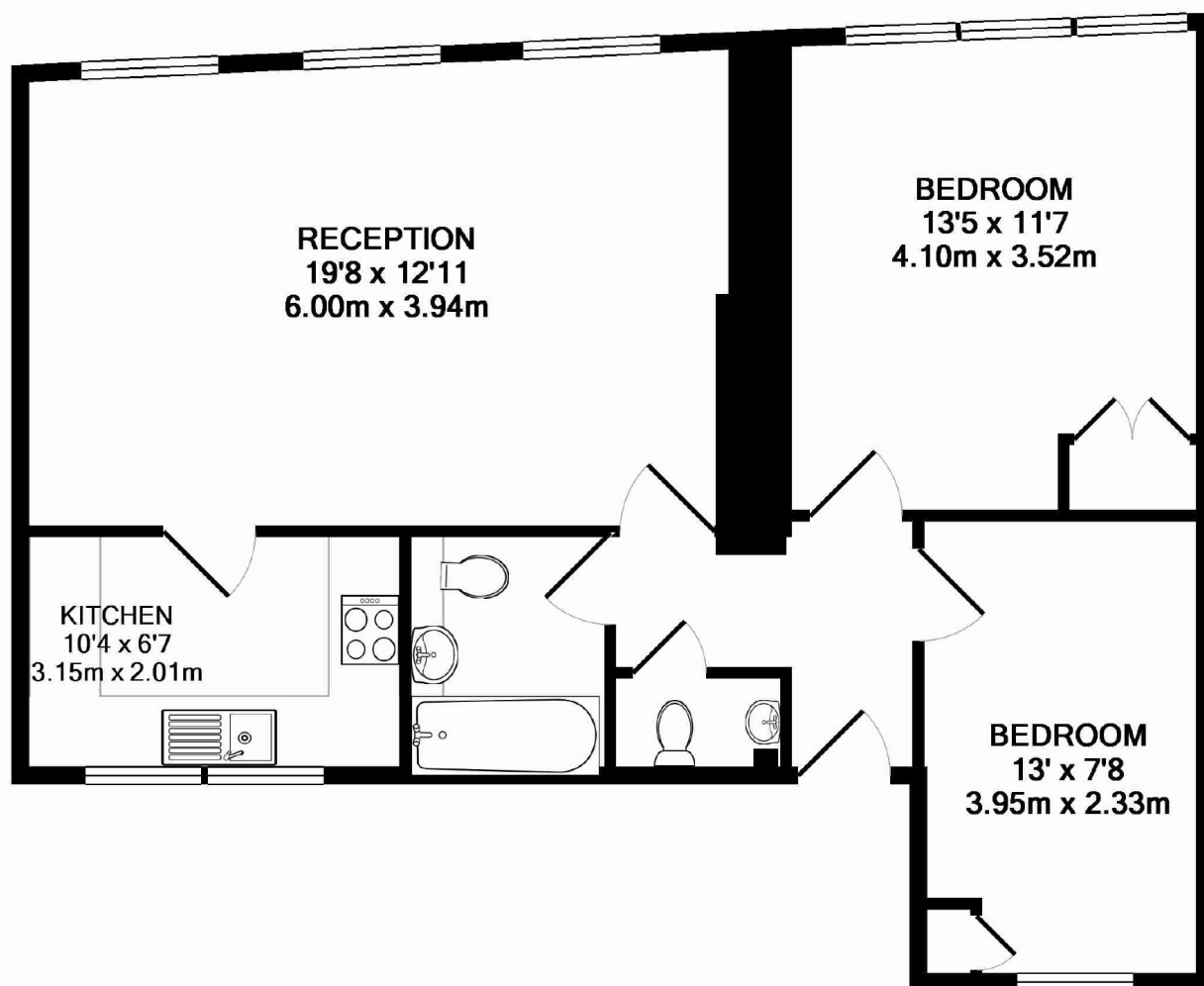
A bright and spacious two double bedroom flat on the second floor of a period conversion on Fleet Street with wood floors throughout and a separate guest cloakroom.

Fleet Street is well located to all the bars, shops and restaurants of the West end with both the River Thames and Blackfriars station within half a mile.

Features

- Light & Bright
- Guest Cloakroom
- Wooden Flooring
- Dishwasher
- Gas Hob
- Furnished

Fleet Street, London, EC4Y



FLEET STREET, EC4Y TOTAL APPROX. FLOOR AREA 687 SQ.FT. (63.8 SQ.M.)

All measurements taken to RICS Guidelines for Gross Internal Area. Whilst every attempt has been made to ensure the accuracy of the floor plan contained here, all measurements are approximate and no responsibility is taken for any error, omission or misstatement. This plan is for illustrative purposes only and should be used as such by any prospective purchaser. The services, systems and appliances shown have not been tested and no guarantee as to their operability or efficiency can be given.

Made with Metropix ©2016