



**Guide Price**  
**£525,000**

**Freehold**

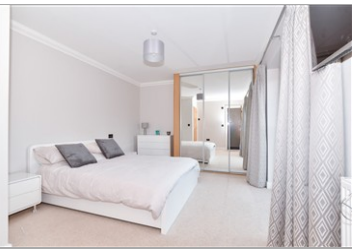
4x  2x  1x 

**Castor Park, Allington,  
Maidstone, Kent ME16**

**OVER 60?**

Secure this property  
for up to **59% less!**

*Wards*  
Helping you move forwards



## Main features

- Chain free
- Large drive for multiple cars
- Incredibly well presented with modern decor throughout
- Nearby to local schools, shops and junction 5 of the M20
- Cul-de-sac location

## Accommodation

### GROUND FLOOR

Hallway

Cloakroom

Lounge: 20'8 x 12'5 (6.30m x 3.79m)

Kitchen/Diner: 18'9 x 14'8 (5.72m x 4.47m)

### FIRST FLOOR

Landing

Bedroom 1: 16'0 x 11'7 (4.88m x 3.53m)

En-Suite Shower Room

Bedroom 2: 14'1 x 10'9 (4.30m x 3.28m)

Bedroom 3: 14'1 x 8'6 (4.30m x 2.59m)

Bedroom 4: 12'5 x 8'5 (3.79m x 2.57m)

Bathroom

### OUTSIDE

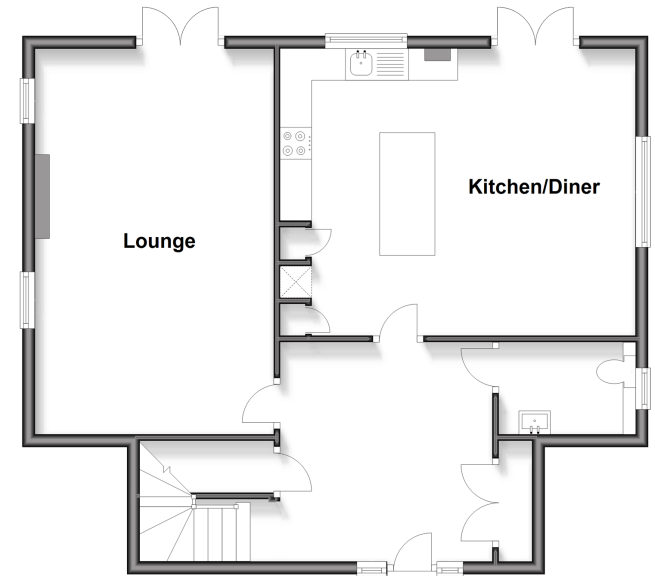
Rear Garden

Front Garden

Driveway

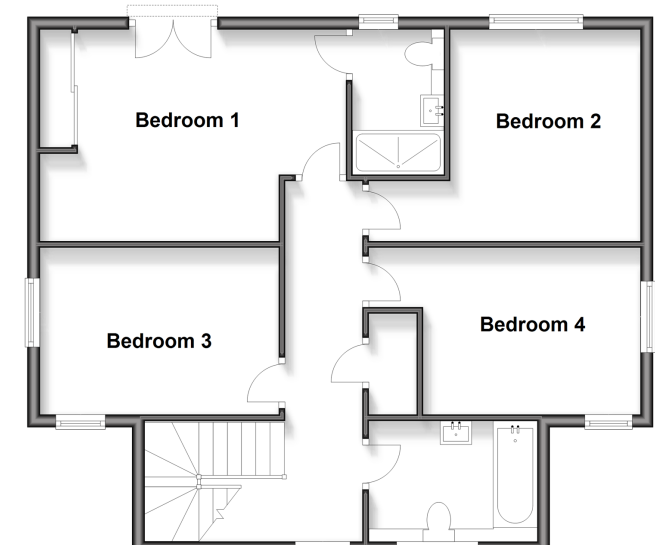
### Ground Floor

Approx. 70.3 sq. metres (756.2 sq. feet)



### First Floor

Approx. 70.3 sq. metres (756.9 sq. feet)



**Call Maidstone - 01622 683737 ■ [wardsof Kent.co.uk](http://wardsof Kent.co.uk)**

- Legal advice should be taken to verify fixtures/fittings, planning, alterations and/or lease details
- Appliances & services are untested, dimensions are approximate and floor plans are not to scale
- Through a Homewise Home For Life Plan people aged 60+ can secure this property for up to 59% less, by purchasing a Lifetime Lease



13159267/20260108/CV/TB