



Guide Price
£300,000

Leasehold

2x  1x  1x 

**Havelock Road,
Croydon, Surrey, CR0**

OVER 60?

Secure this property
for up to **59% less!**

cubitt&west
Helping you move forwards



Main features

- Chain free ready to move into
- Moments away from local tram links and East Croydon station
- Garage and private garden en bloc
- Tree lined conservation road
- Low maintenance charges

Accommodation

FIRST FLOOR

Hallway

Lounge: 16'0 x 13'4 (4.88m x 4.07m)

Kitchen: 8'1 x 7'0 (2.47m x 2.14m)

Bedroom 1: 14'0 x 9'0 (4.27m x 2.75m)

Bedroom 2: 11'1 x 10'10 (3.38m x 3.30m)

Bathroom

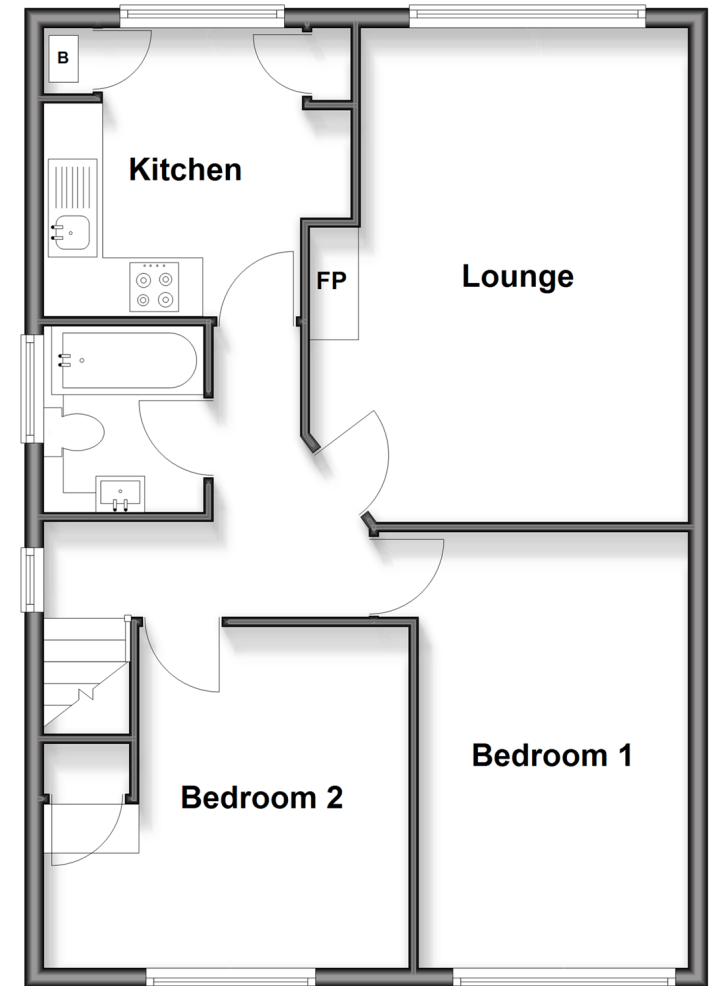
OUTSIDE

Garage

Communal Garden

First Floor

Approx. 63.5 sq. metres (683.2 sq. feet)



Call Shirley - 020 8654 3037 ■ cubittandwest.co.uk

- Legal advice should be taken to verify fixtures/fittings, planning, alterations and/or lease details
- Appliances & services are untested, dimensions are approximate and floor plans are not to scale
- Through a Homewise Home For Life Plan people aged 60+ can secure this property for up to 50% less, by purchasing a Lifetime Lease.



21712125/20251129/SR/MS