



Clayton Drive, Birmingham

burchell
edwards



Property Description

Burchell Edwards are delighted to bring to market this three bedroom semi-detached property, situated in a sought after road in Castle Bromwich (B36).

This spacious family home briefly comprises an enclosed porch, entrance hallway, fitted kitchen, lounge and dining area, utility space, three bedrooms and family bathroom with separate WC.

Upon arrival you will discover off-road parking by way of a private driveway and also a garage. To the rear, there is a low maintenance rear garden, with a fantastic log cabin that creates the perfect space for a quiet retreat, especially in the warmer seasons.

The internal carries a beautiful natural light throughout, and has a lovely neutral decor making it ready to move into.

Sit amongst many local amenities/shops the property also falls within very popular area for school catchments.

With the additional benefits of double glazing and gas central heating, we recommend that viewings are essential to gain a sense of the space and accommodation available. We do anticipate high levels of interest.

Entrance Porch

Tiled flooring and spotlights.

Entrance Hallway

Central heating radiator, cloak cupboard and karndean flooring.

Lounge

Double glazed bay window to front elevation, central heating radiator, gas fire and carpet.

Dining Room

Double glazed French doors to rear elevation, central heating radiator and carpet.

Kitchen

Double glazed window to rear elevation, double glazed door to side elevation, a range of wall and base units with work surface over incorporating a sink with drainer unit, double oven, electric hob, integrated microwave and dishwasher, composite door to garage, karndean flooring, central heating radiator, under stairs storage pantry.

Utility Room

Double glazed windows to rear elevation, double glazed door to side elevation, wall and base storage units, sink with drainer unit, central heating boiler housed, space and plumbing for washing machine.

Landing

Carpet flooring and Loft access with drop down ladders

Bedroom One

Double glazed bay window to front elevation, central heating radiator, carpet and fitted wardrobes.

Bedroom Two

Double glazed window to rear elevation, central heating radiator and carpet.

Bedroom Three

Double glazed window to front elevation, central heating radiator and carpet.

W.C

Double glazed window to side elevation, W.C, wash hand basin and vinyl flooring.

Bathroom

Double glazed window to rear elevation, bath, quadrant shower cubicle, vinyl flooring, vanity wash hand basin, central heating radiator, vinyl flooring and tiling to walls.

Front Garden

Tarmac driveway providing off road parking.

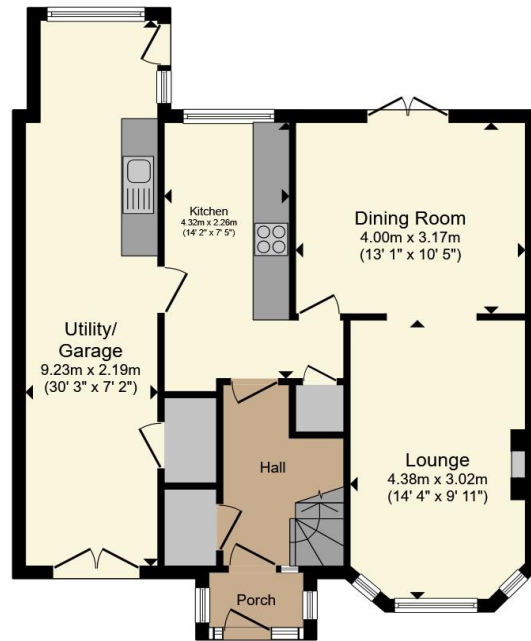
Rear Garden

Well- appointed log cabin, lawn area, raised deck area, paved patio area, greenhouse, outside tap, storage shed.





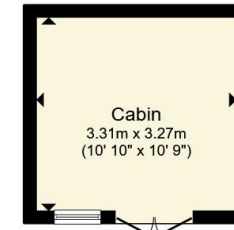




Ground Floor



First Floor



Outbuilding

Total floor area 124.7 m² (1,342 sq.ft.) approx

This floor plan is for illustrative purposes only. It is not drawn to scale. Any measurements, floor areas (including any total floor area), openings and orientation are approximate. No details are guaranteed, they cannot be relied upon for any purpose and they do not form part of any agreement. No liability is taken for any error, omission or misstatement. A party must rely upon its own inspection(s). Powered by www.propertybox.io



To view this property please contact Burchell Edwards on

T 0121 749 7888
E castlebromwich@burchelledwards.co.uk

2-4 Hurst Lane
 BIRMINGHAM B34 7HR

EPC Rating: D Council Tax
 Band: D

Tenure: Freehold

view this property online burchelledwards.co.uk/Property/CBW210990



1. MONEY LAUNDERING REGULATIONS Intending purchasers will be asked to produce identification documentation at a later stage and we would ask for your co-operation in order that there will be no delay in agreeing the sale. 2. These particulars do not constitute part or all of an offer or contract. 3. The measurements indicated are supplied for guidance only and as such must be considered incorrect. Potential buyers are advised to recheck measurements before committing to any expense. 4. We have not tested any apparatus, equipment, fixtures, fittings or services and it is in the buyers interest to check the working condition of any appliances.

Burchell Edwards is a trading name of Connells Residential which is registered in England and Wales under company number 1489613, Registered Office is Cumbria House, 16-20 Hockliffe Street, Leighton Buzzard, Bedfordshire, LU7 1GN. VAT Registration Number is 500 2481 05.

See all our properties at www.burchelledwards.co.uk | www.rightmove.co.uk | www.zoopla.co.uk

Property Ref: CBW210990 - 0004