



FRANCHE COURT ROAD, SW17

£450,000

- Two bedrooms
- First floor Apartment
- Share of freehold
- Desirable location
- Close to transport
- Energy rating: D



ABOUT THE HOME

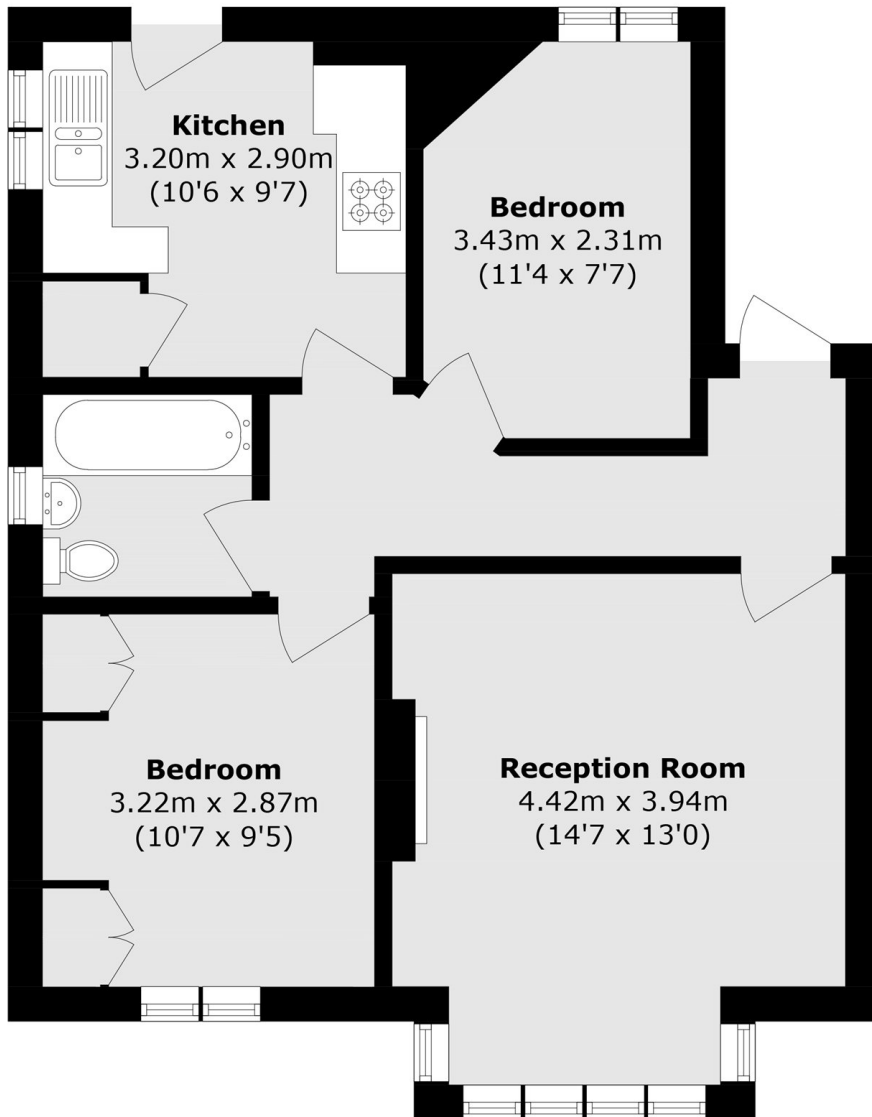
A beautifully presented two-bedroom first floor garden flat, ideally located for Earlsfield and Wandsworth Common.

Accommodation comprises; a spacious reception room with attractive bay windows, creating an excellent living and entertaining space. The separate contemporary kitchen is fitted with a range of modern units, generous worktop space and direct access to a shared garden. The property comprises two well-proportioned double bedrooms, with the main bedroom benefiting from fitted storage, alongside a well-appointed family bathroom.

Franche Court Road is ideally situated for Earlsfield Station, providing fast and frequent services into London Waterloo. The area is well served by a vibrant selection of independent cafés, restaurants, pubs and local shops, while the expansive green spaces of Wandsworth Common and King George's Park are both within easy walking distance.







Total area (approx.): 54.8 sq. m (589.9 sq. ft)

JACKSONS EARLSFIELD

372-374 Garratt Lane,
Earlsfield, London, SW18 4ES
Sales: 020 8971 7979
Lettings: 020 8971 7070

Energy Rating: D We aim to make our particulars both accurate and reliable. However they are not guaranteed; nor do they form part of an offer or contract. If you require clarification on any points then please contact us, especially if you're traveling some distance to view. Please note that appliances and heating systems have not been tested and therefore no warranties can be given as to their good working order.