



## 9 Kingfield Lodge 22 Kingfield Road, Sheffield S11 9AS £850 Per Calendar Month

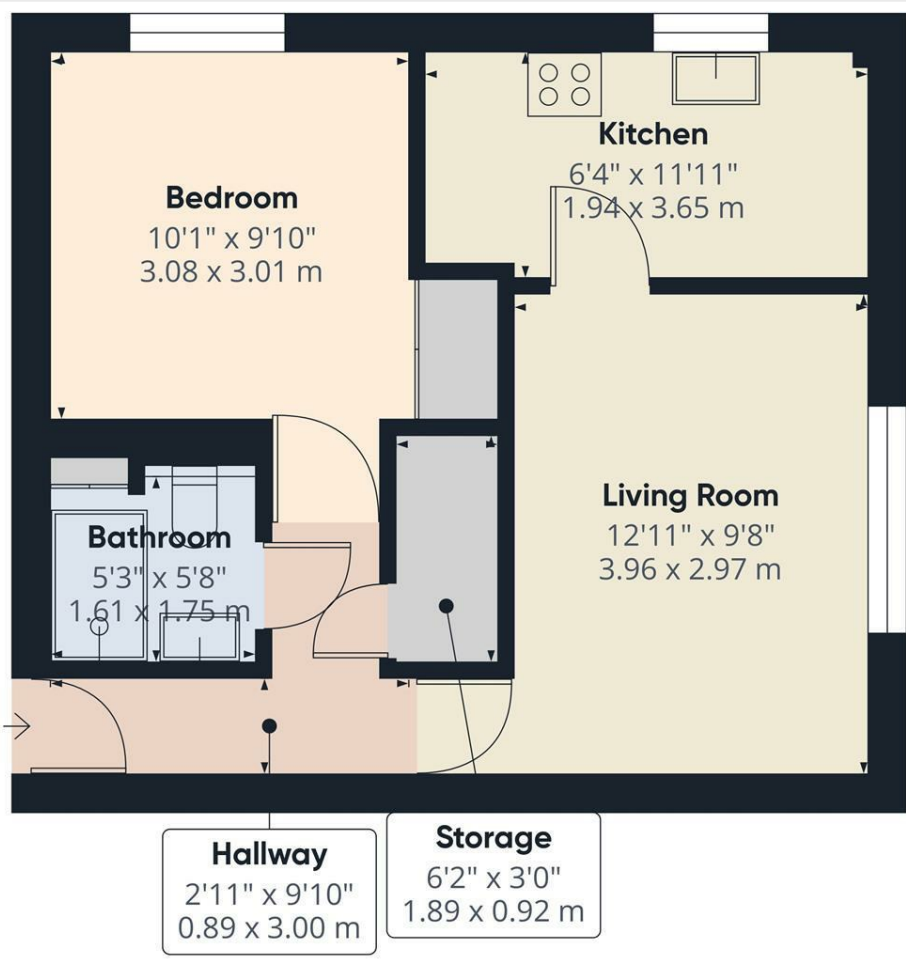
\*\*\*WATER & HEATING IS INCLUDED WITHIN THE RENT\*\*\*

A fantastic opportunity has arisen to rent this well presented one bedroom first floor apartment, ideally situated in a highly desirable area offering a wealth of local shops, cafés, and everyday amenities. With excellent access to both the stunning Peak District and the vibrant Sheffield City Centre, this property is perfect for those seeking convenience and lifestyle.

The apartment is accessed via a lift or staircase and opens into an entrance hallway. The lounge provides a comfortable living area through to a kitchen with fitted units. The double bedroom benefits from a fitted wardrobe, and the bathroom has a walk in shower. Residents also have access to a communal laundry room for added convenience.

Outside, parking is available on a first come, first served basis. The property is offered unfurnished and is available to non smokers. Council Tax is Band A, and the Energy Performance Certificate is currently awaited.

Early viewing is highly recommended—get in touch today to arrange yours.

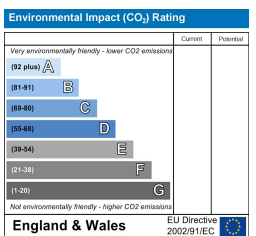
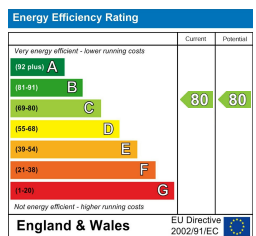


Approximate total area<sup>m</sup>  
416 ft<sup>2</sup>  
38.6 m<sup>2</sup>

(1) Excluding balconies and terraces

Calculations reference the RICS IPMS 3C standard. Measurements are approximate and not to scale. This floor plan is intended for illustration only.

GIRAFFE360



Banner Cross  
Hathersage  
Bakewell  
Matlock  
www.saxtonmee.co.uk

949-951 Ecclesall Road, Sheffield S11 8TN  
3 Bank View, Main Road, Hathersage S32 1BB  
Matlock Street, Bakewell DE45 1EE  
27 Causeway Lane, Matlock, DE4 3AR

T: 0114 268 3241  
T: 01433 650009  
T: 01629 815307  
T: 01629 828250

E: bannercross@saxtonmee.co.uk  
E: hathersage@saxtonmee.co.uk  
E: bakewell@saxtonmee.co.uk  
E: matlock@saxtonmee.co.uk

While we endeavour to make our sales particulars fair, accurate and reliable, they are only a general guide to the property and, accordingly, if there is any point, which is of particular importance to you, please contact the relevant office. The Agents have not tested any apparatus, equipment, fittings or services and so cannot verify they are in working order. The buyer is advised to obtain verification. Please note all the measurement details are approximate and should not be relied upon as exact. All plans, floor plans and maps are for guidance purposes only and are not to scale. Under no circumstances should they be relied upon as exact or for use in planning carpets and other such fixtures, fittings or furnishings. YOUR HOME IS AT RISK IF YOU DO NOT KEEP UP REPAYMENTS ON A MORTGAGE OR OTHER LOAN SECURED ON IT. 'A Life Assurance policy may be requested.' \*Written Quotations of credit terms available on request.