

Burchetts Green Road

Maidenhead • • SL6 6QS
Offers In Excess Of: £610,000



coopers
est 1986

Burchetts Green Road

Maidenhead • • SL6 6QS

Nestled along the sought-after Burchetts Green Road, this beautifully presented home offers generous and versatile living arranged over three floors, effortlessly blending period charm with modern comforts. The ground floor boasts an impressive, recently extended open-plan kitchen/dining room with bi-fold doors opening onto the garden patio, complemented by a separate living room featuring a cosy fireplace and exposed wooden beams, as well as a convenient downstairs WC. On the first floor, you'll find two bedrooms and a stylish family bathroom, with a spacious further bedroom occupying the top floor. Outside, the property continues to impress with a superb outbuilding offering a dedicated office with a shower room, ideal for home working or an additional storage shed. Located in the highly sought-after village of Burchetts Green, you're surrounded by scenic countryside, renowned gastro pubs, village amenities and excellent transport links into Maidenhead, Marlow and Henley, as well as easy access to the M4 and Elizabeth Line.

No Chain

Extended Family Home

Sought-After Village Setting

Open Plan Kitchen & Dining

Outer Building With Shower Room

Separate Living Room & Fireplace

Character Features

Driveway Parking

Local Amenities Nearby

Spanning Over Three Floors

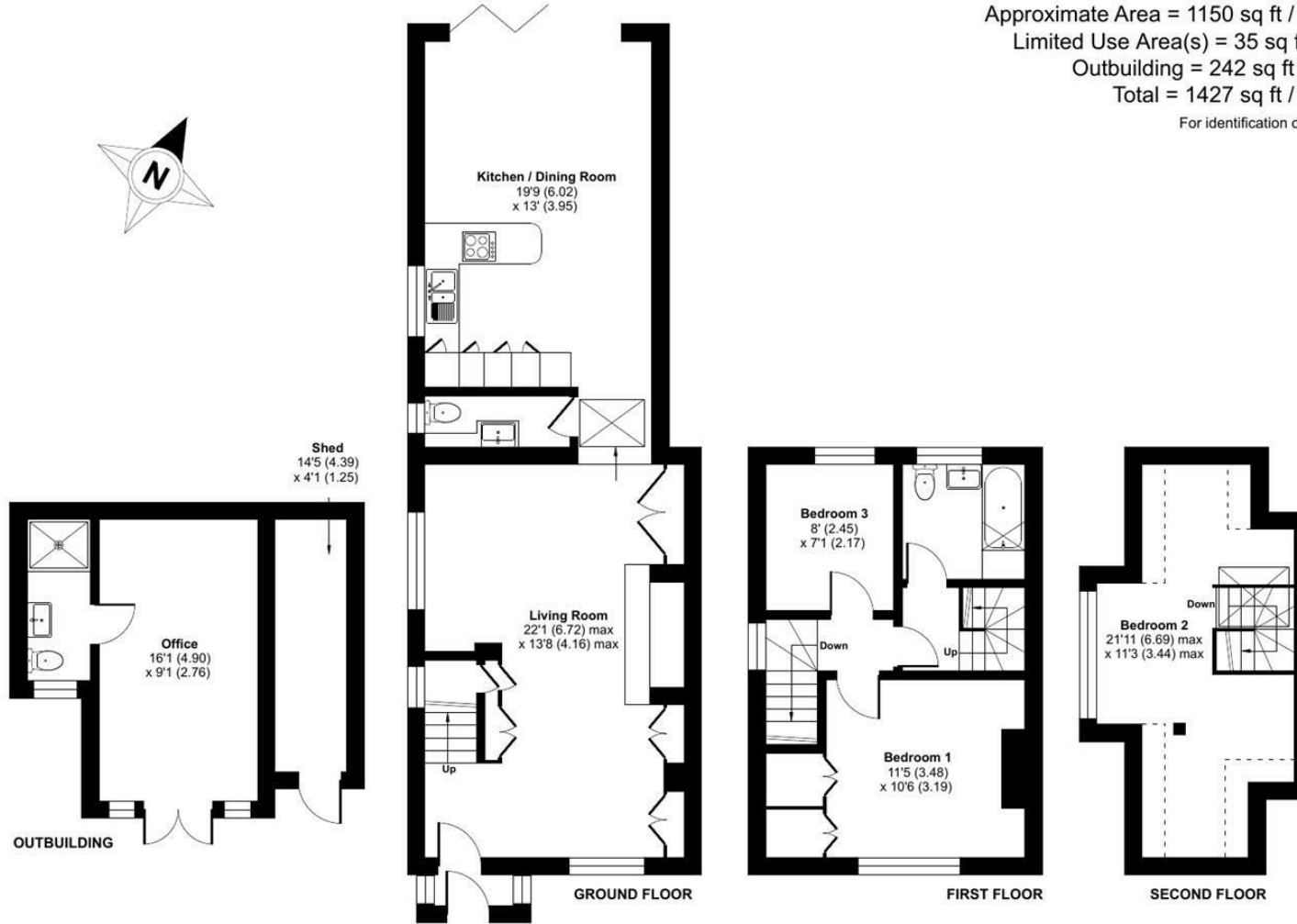
These particulars are intended as a guide and must not be relied upon as statements of fact. Your attention is drawn to the Important Notice on the last page.





Burchetts Green Road, Burchetts Green, Maidenhead, SL6

Approximate Area = 1150 sq ft / 106.8 sq m
 Limited Use Area(s) = 35 sq ft / 3.2 sq m
 Outbuilding = 242 sq ft / 22.4 sq m
 Total = 1427 sq ft / 132.4 sq m
 For identification only - Not to scale



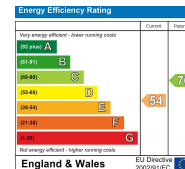
Floor plan produced in accordance with RICS Property Measurement 2nd Edition, Incorporating International Property Measurement Standards (IPMS2 Residential). © n/checom 2025. Produced for Coopers. REF: 1376798

coopers
est 1986



**42 Queen Street, Maidenhead,
 SL6 1HZ**
 maidenhead@coopersresidential.co.uk

CoopersResidential.co.uk



Important Notice: These particulars, whilst believed to be accurate are set out as a general outline only for guidance and do not constitute any part of an offer or contract. Intending purchasers should not rely on them as statements or representation of fact, but must satisfy themselves by inspection or otherwise has the authority to make or give any representation or warranty in respect of the property.