



Buckley Road, NW6

£425,000

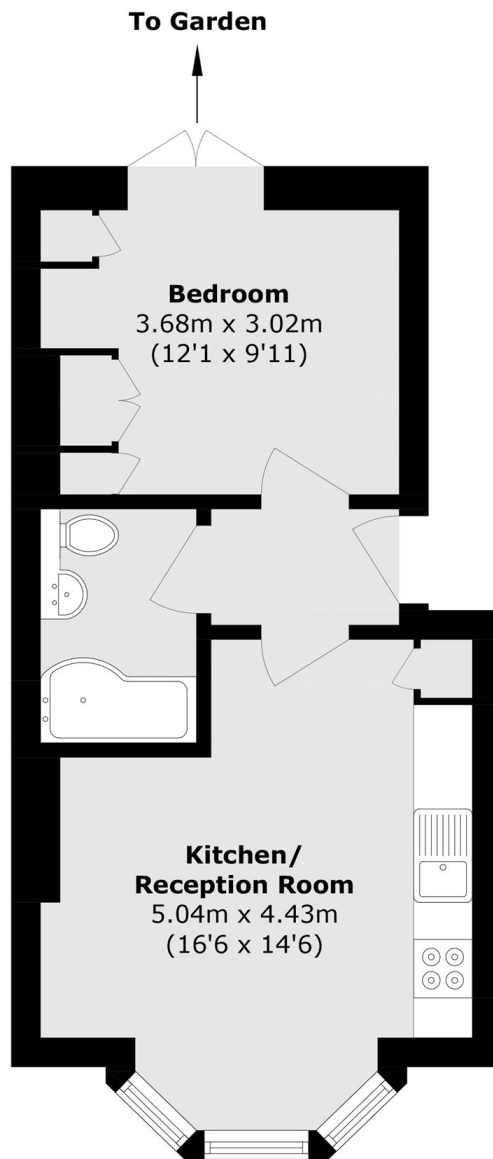
A one bedroom Victorian conversion on the ground floor, with high ceilings and an abundance of character throughout. Enjoy a private, southerly aspect garden, share of freehold, and no onward chain.

Buckley Road is ideally located close to the numerous shops, cafés and restaurants of Queens Park's Salusbury Road. Excellent transport links include both Brondesbury Park and Brondesbury overground stations and Kilburn underground.

Features

- Victorian Conversion
- Ground Floor
- Private Garden
- No Onward Chain
- Share Of Freehold
- Close To Station

Buckley Road, LONDON, NW6



Total area (approx.): 36.9 sq. m (429.5 sq. ft)