



**Drayton Gardens, SW10**

£1,100,000

**Dexters**



## Drayton Gardens, SW10

A bright and well-presented first floor apartment with excellent natural light and attractive period features throughout. The spacious reception room has large bay windows and bespoke built-in shelving, creating a comfortable living and dining space. High ceilings and period detailing bring warmth and grandeur throughout, balanced by tasteful modern updates that make the apartment feel effortlessly liveable. Ideal for those seeking character, charm and intelligent design in equal measure.

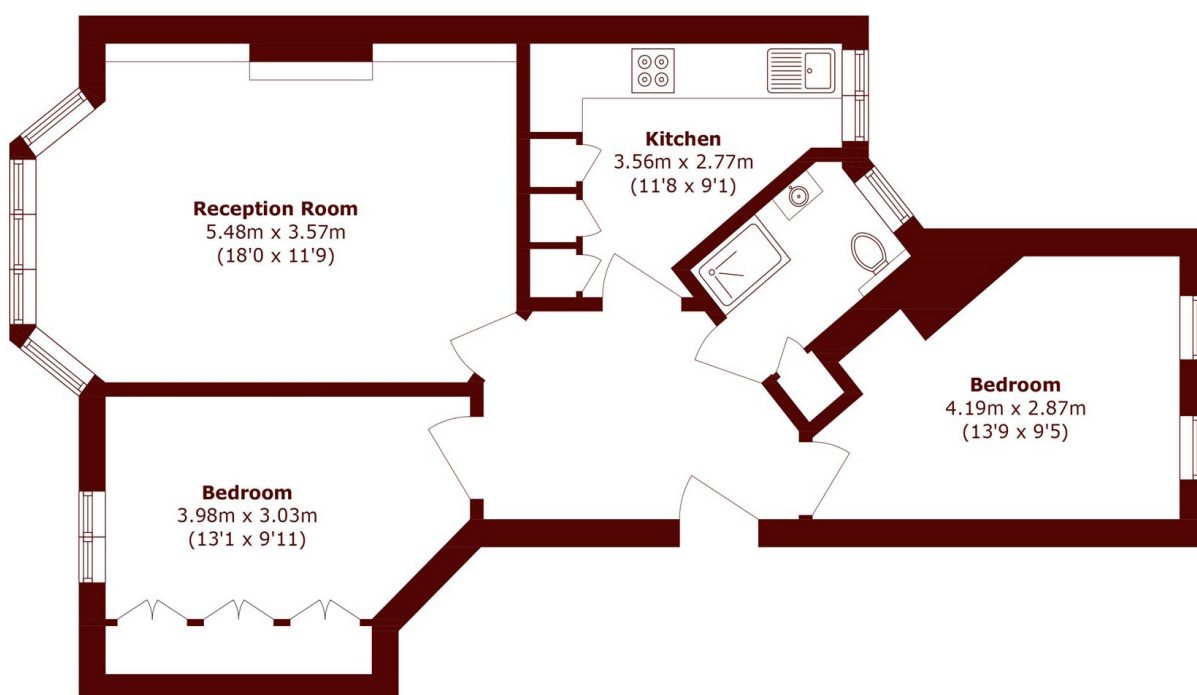
Drayton Gardens is a highly desirable location at the heart of Chelsea and South Kensington. Both South Kensington and Gloucester Road underground stations are within walking distance allowing for easy and convenient access across London.

### Features

- First Floor
- Two Bedrooms
- Share Of Freehold
- Immaculate Finish
- No Ongoing Chain
- Highly Sought After Location



# Drayton Gardens, London, SW10



## First Floor

Total area (approx.): 62.7 sq. m (674.9 sq. ft)