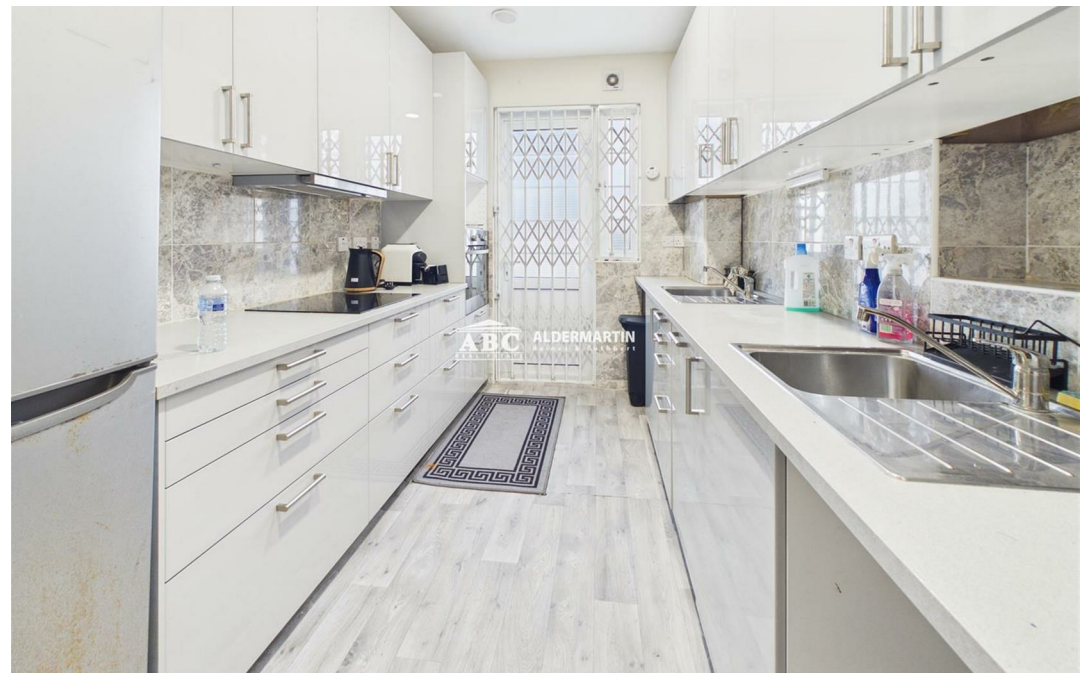


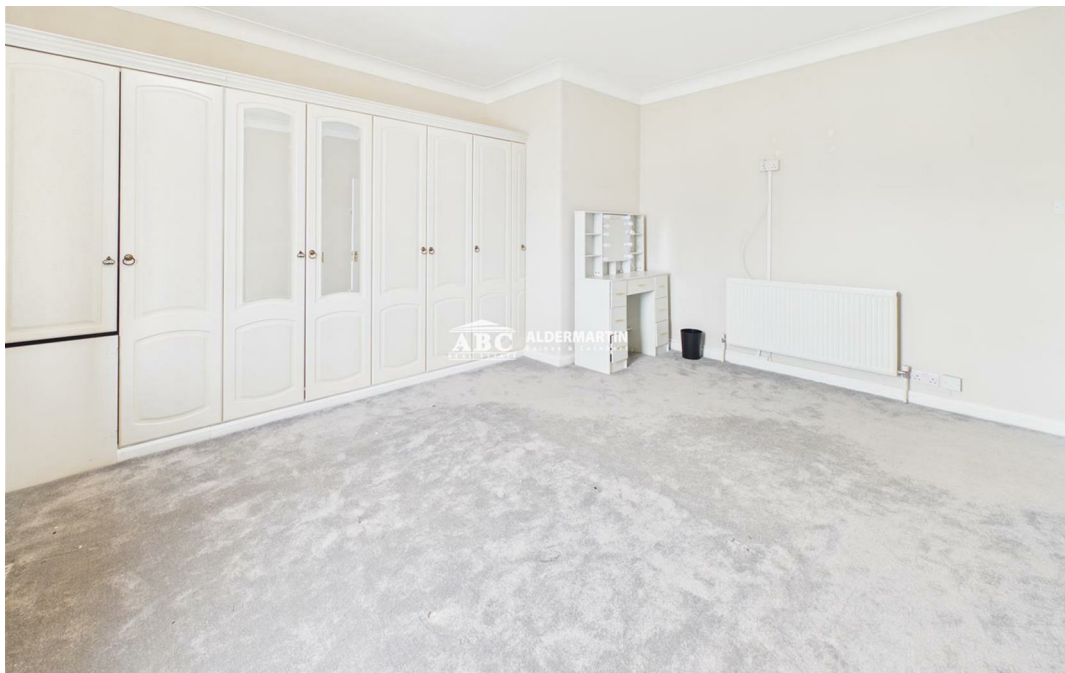


**Edgwarebury Lane, Edgware HA8 8LP**

**£2,250 Per  
Calendar**

**Month**





- 2 BEDROOM FLAT
- COUNCIL TAX BAND C & EPC RATING C

- EXCELLENT LOCATION
- UNFURNISHED

- AVAILABLE NOW
- MODERN KITCHEN

A spacious 2 bedroom first floor flat to rent in this superb location just minutes walk away from Edgware Tube Station. Including a living room, separate kitchen with appliances, bathroom and storage cupboards. Unfurnished and available now.



**ABC Hendon Sales**  
**020 8203 4567**

