

Grove Road Wimbledon, SW19 1BL

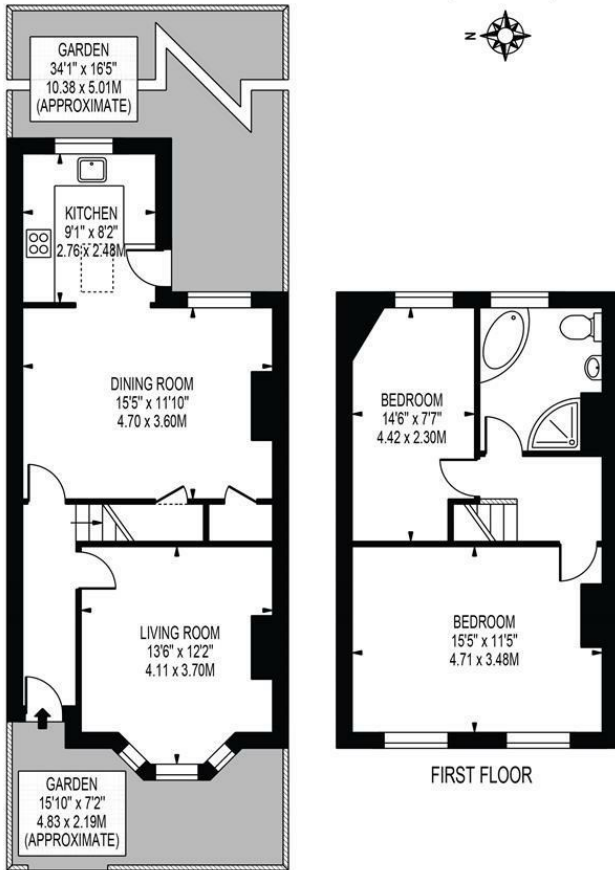
£675,000 Freehold



A period house with stunning kerb appeal with two double bedrooms located on a highly sought after road close to tube station and fantastic amenities. This well proportioned house has a modern kitchen, dining room with feature fireplace that gives direct access to the private rear garden, a separate good sized living room with matching fireplace. Upstairs are two good sized double bedrooms and the modern fitted family bathroom. As well as having potential to add a further bedroom subject to the usual consents, this lovely home is conveniently located close to transport and good schools. Houses of this style are rare in this location so a viewing early is recommended to avoid disappointment.

GROVE ROAD

APPROXIMATE GROSS INTERNAL FLOOR AREA: 889 SQ FT - 82.56 SQ M



FOR ILLUSTRATION PURPOSES ONLY

THIS FLOOR PLAN SHOULD BE USED AS A GENERAL OUTLINE FOR GUIDANCE ONLY AND DOES NOT CONSTITUTE IN WHOLE OR IN PART AN OFFER OR CONTRACT. ANY INTENDING PURCHASER OR LESSEE SHOULD SATISFY THEMSELVES BY INSPECTION, SEARCHES, ENQUIRIES AND FULL SURVEY AS TO THE CORRECTNESS OF EACH STATEMENT. ANY AREAS, MEASUREMENTS OR DISTANCES QUOTED ARE APPROXIMATE AND SHOULD NOT BE USED TO VALUE A PROPERTY OR BE THE BASIS OF ANY SALE OR LET.



- Period Freehold House
- Two Double Bedrooms
- Beautifully Presented
- Pretty Private Garden
- Sought After Location
- Close To Tube Station
- EPC Rating : C
- Merton Council Tax Band : D

Energy Efficiency Rating

	Current	Potential
Very energy efficient - lower running costs		
(92 plus) A		
(81-91) B		85
(69-80) C	69	
(55-68) D		
(39-54) E		
(21-38) F		
(1-20) G		
Not energy efficient - higher running costs		
England & Wales	EU Directive 2002/91/EC	

For Free Mortgage Quote and Best Mortgage Rates, call an Ellisons Mortgage Advisor on 020 8544 0518



Although these particulars are believed to be correct, their accuracy is not guaranteed and they do not form part of any contract.

Celebrating 30 years of successful Sales and Lettings in Merton

