

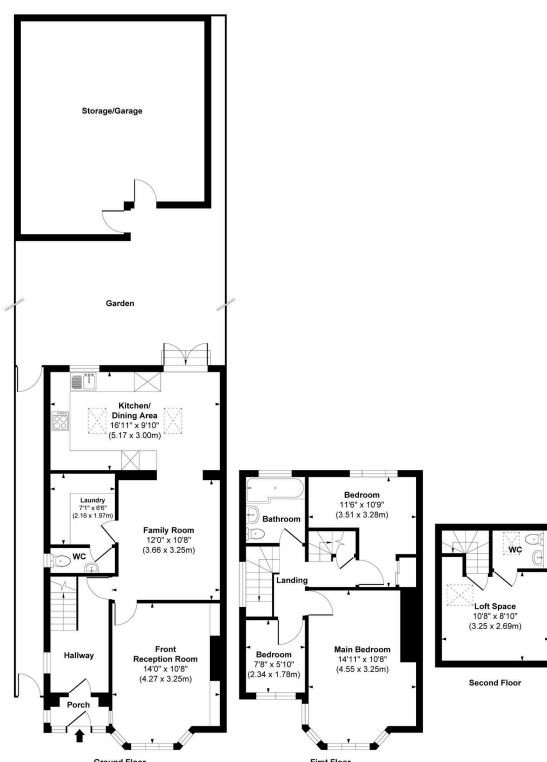
Devon Avenue, Twickenham

Guide Price £725,000

3 1 2



- Quote LI 1124
- South facing garden
- Off street parking for 2 cars
- Part of 'The Counties' development
- Perfect family home
- Sole agency
- Catchment area for a number of excellent schools
- Easy access to station and local parks
- Low maintenance garden
- Much loved family home for 30 years



Approx. Gross Internal Floor Area 1,167 sq. ft / 108.40 sq. m.

This floorplan is intended for illustrative purposes only and should be used as a general guide. All measurements are approximate and not to scale. Exact dimensions should be independently verified.

Located on the ever popular Devon Avenue, this well presented three bedroom home offers generous living space, a tidy south facing garden, and off-street parking for two cars

The ground floor features two reception rooms, a cosy enclosed front room and an open plan lounge, ideal for entertaining. There's also a downstairs WC, utility room, and a modern kitchen with direct access to the rear garden.

Upstairs offers three bedrooms and a family bathroom. A fixed staircase leads to a useful loft room currently used as a hobby space or home office, providing valuable extra space to suit a range of needs.

With its flexible layout, great location, and move in ready condition, this home is ideal for families or anyone needing space to work from home.