



Flat 25, 23 Victoria Place, Stoke, Plymouth, Devon, PL2 1BY

Price £125,000



This top floor flat, is ideally situated within a purpose-built building, and offers a perfect blend of modern convenience and comfortable living.

Upon entering, you are greeted by a welcoming entrance hall that leads into the heart of the home. The open-plan living and kitchen area is thoughtfully designed to maximize space and functionality. The kitchen is equipped with a range of fitted wall and base units, complemented by modern appliances including a fridge freezer, washing machine, oven, and electric hob. This space seamlessly flows into the living area, creating an inviting environment perfect for both relaxation and entertaining. There is a Juliet balcony that boasts stunning views over the River Tamar and across to Torpoint.

There are 2 double bedrooms, offering ample space for a wardrobe and additional furnishings to suit your needs. Natural light floods the room, enhancing its spacious and airy feel. The larger bedroom benefits from en-suite facilities.

The modern bathroom is well-appointed, featuring a bath with a shower over, a stylish wash hand basin, and a WC, providing a sleek and practical space for your daily routines.

This flat is an ideal choice for those seeking a contemporary home with all the conveniences of modern living. Don't miss the opportunity to make this fantastic property your new home.

Lease Information: We understand the apartment is held on Lease with 115 years remaining and subject to a service charge of approximately £1470 per year but this is subject to change. The above information is provided in good faith although we would recommend that prospective purchasers consult their own solicitor for formal verification.

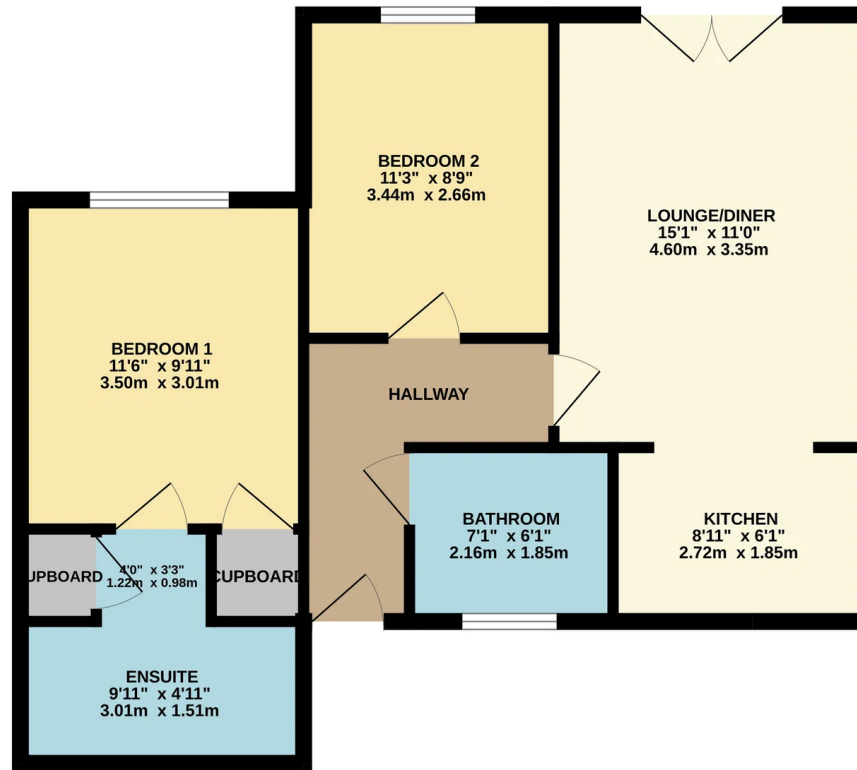


To view this property call Lang Town & Country Estate Agents on **01752 256000**

www.langtownandcountry.com



GROUND FLOOR
611 sq.ft. (56.8 sq.m.) approx.



TOTAL FLOOR AREA : 611 sq.ft. (56.8 sq.m.) approx.
Whilst every attempt has been made to ensure the accuracy of the floorplan contained here, measurements of doors, windows, rooms and any other items are approximate and no responsibility is taken for any error, omission or mis-statement. This plan is for illustrative purposes only and should be used as such by any prospective purchaser. The services, systems and appliances shown have not been tested and no guarantee as to their operability or efficiency can be given.
Made with Metropix ©2026

Lang Town & Country
6 Mannamead Road
Plymouth
PL4 7AA
Tel: 01752 256000
Email: property@langtownandcountry.com
www.langtownandcountry.com

Lang Town & Country endeavour to ensure the accuracy of property details produced and displayed, we have not tested any apparatus, equipment, fixtures, fittings or services and so cannot verify that they are connected, in working order or fit for purpose. A buyer must check the availability of any property and make an appointment to view before embarking on any journey to see a property.

