



Hazel Grove, Hatfield, AL10 9DE


House | 4 Bedrooms

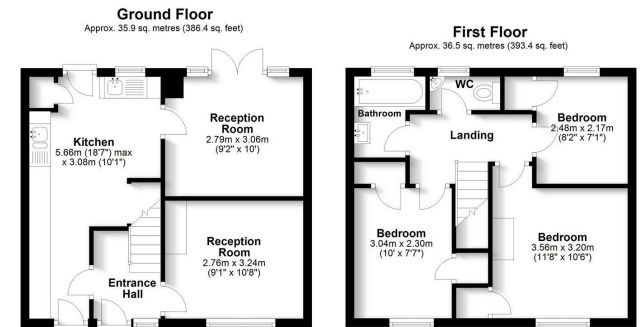
£365,000 Freehold

**LARKHAM**  
**PIKE** &

[www.larkhamandpike.co.uk](http://www.larkhamandpike.co.uk)



Energy Efficiency Rating		
	Current	Potential
Very energy efficient - lower running costs		
(92 plus) <b>A</b>		
(81-91) <b>B</b>		
(69-80) <b>C</b>		
(55-68) <b>D</b>		
(39-54) <b>E</b>		
(21-38) <b>F</b>		
(1-20) <b>G</b>		
Not energy efficient - higher running costs		
<b>England &amp; Wales</b>	EU Directive 2002/91/EC	



Total area: approx. 72.4 sq. metres (779.8 sq. feet)

For identification purposes only. Not to scale.  
Plan produced using Planific.