



Guide Price £400,000 - £425,000 *NO ONWARD CHAIN!*

This three-bedroom semi-detached house in Hullbridge offers an excellent opportunity to acquire a spacious family home, ideally positioned close to local amenities and the picturesque River Crouch. Boasting generous living accommodation throughout, the property features a spacious lounge, well-proportioned bedrooms, a large rear garden perfect for outdoor enjoyment, and the added benefits of a garage and off-street parking, providing both comfort and practicality.

- Large rear garden
- Off street parking
- Close to the river crouch
- Close to local amenities
- No onward chain
- Garage
- Modern kitchen
- Three bedrooms
- Spacious lounge and dining area

Ambleside Gardens

Hockley

£400,000

Guide Price



Ambleside Gardens



Frontage

Blocked paved driveway for multiple vehicles to front. Access to side gate and front door.

The property offers flexible and well-balanced accommodation, making it ideal for modern living. The spacious bedrooms provide ample room for growing families, while the obscure double glazed window to the front aspect and access to family bathroom and downstairs rooms. The generous rear garden presents excellent space for entertaining, recreation, or future

parking opportunities.

Kitchen/Breakfast Room

14'0 x 10'8

Double glazed window to the rear, smooth ceiling with inset spotlights, breakfast bar, integrated fridge freezer, inset double oven, gas hob with extractor fan above, sink, tiled splashbacks and tiled flooring throughout.

This home represents a fantastic opportunity for buyers seeking a well-located property in a highly desirable village setting. With its spacious layout, attractive outdoor space, practical

parking facilities, and proximity to the River Crouch and everyday amenities, this is a property

that must be viewed to be fully appreciated.

Dining Room

11'11 x 10'0

Smooth ceiling with pendant ceiling light, double glazed the rear garden and laminate flooring throughout.

Ground Floor Bathroom

Obscure double glazed window, corner bath with wall mounted towel rail and tiled flooring throughout.

Landing

Carpeted flooring throughout and access to all bedrooms

Bedroom One

14'5 x 9'8

Double glazed window, fitted eves wardrobe storage, wall

Bedroom Two

13'3 x 13'0

Double glazed window, space for storage, wall mounted

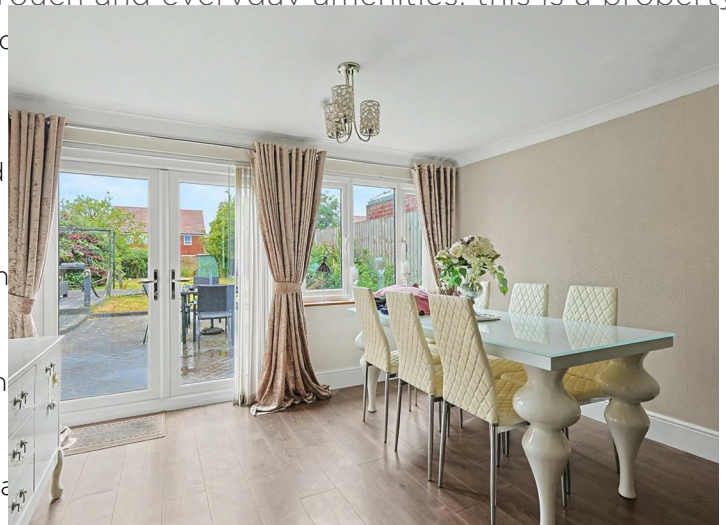
Bedroom Three

7'5 x 6'11

Double glazed window, wall mounted radiator and carpeted

Garden

Block paved patio area leads from double doors in dining lawn. Circa 100ft rear garden. Additionally accessed via s

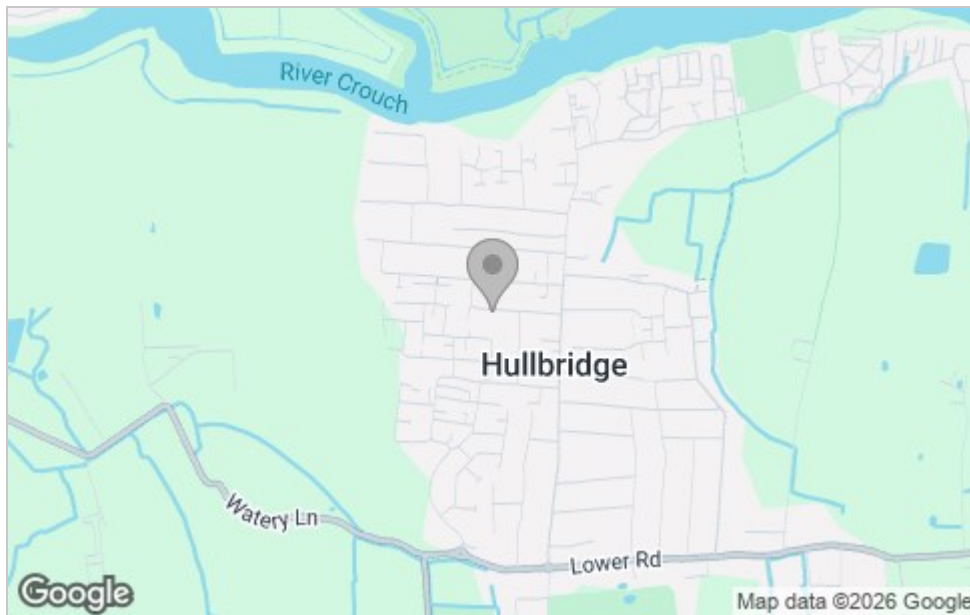




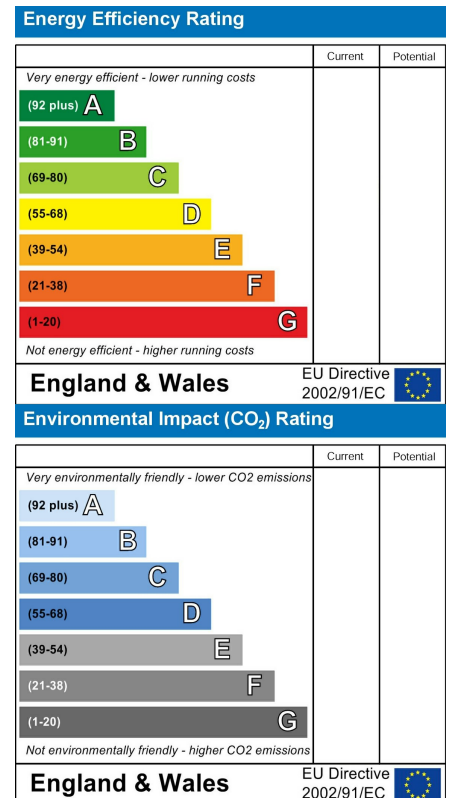
Floor Plan



Area Map



Energy Efficiency Graph



Viewing

Please contact our Hockley Office on 01702 416476 if you wish to arrange a viewing appointment for this property or require further information.

These particulars, whilst believed to be accurate are set out as a general outline only for guidance and do not constitute any part of an offer or contract. Intending purchasers should not rely on them as statements of representation of fact, but must satisfy themselves by inspection or otherwise as to their accuracy. No person in this firm's employment has the authority to make or give any representation or warranty in respect of the property.

11 Main Road, Hockley, Essex, SS5 4QY

Office: 01702 416476 hockley@bearestateagents.co.uk <https://www.bearestateagents.co.uk>