



## Chiswick High Road, W4

£2,200 Per week

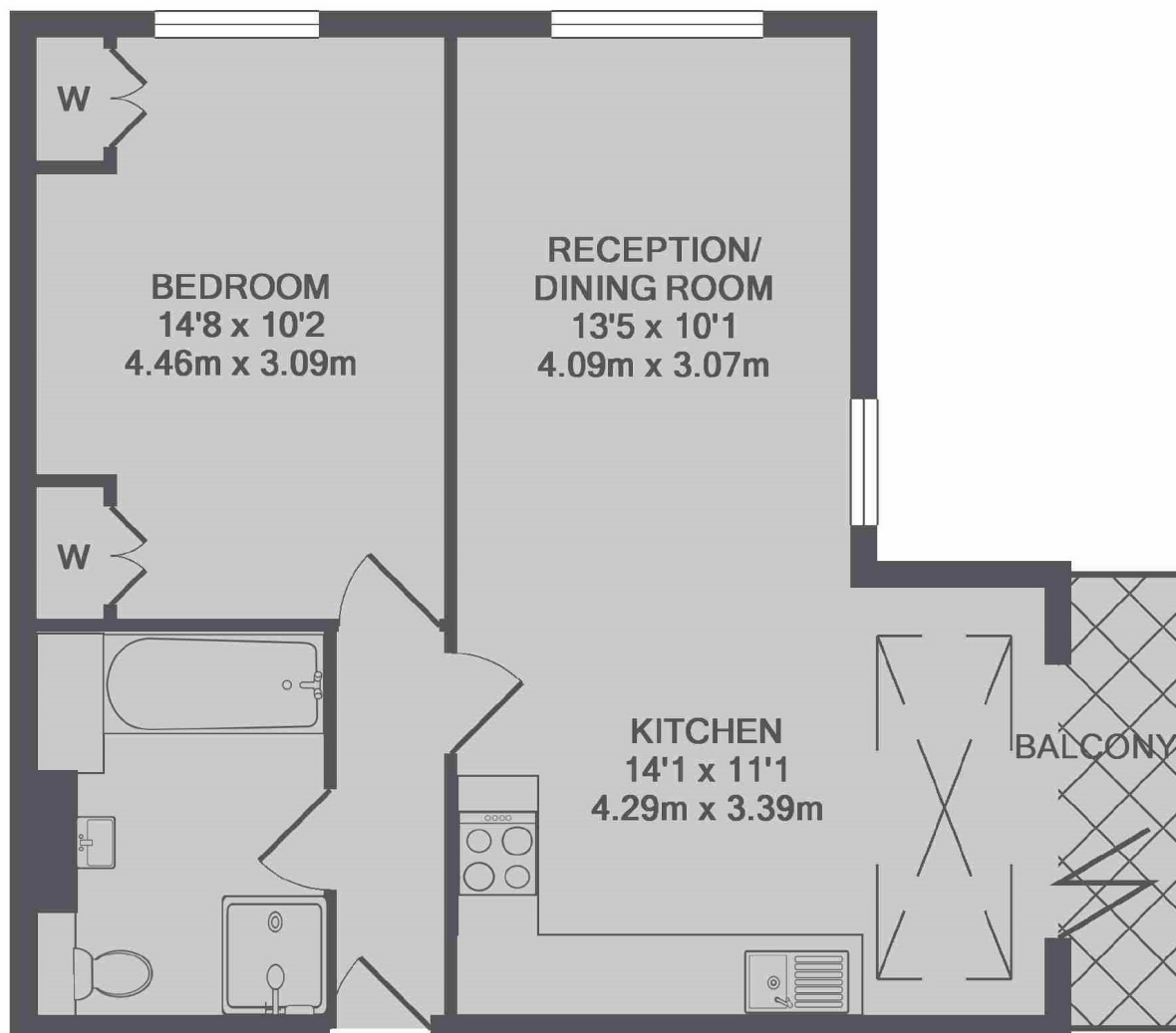
A modern apartment with wood flooring throughout with a large reception room leading onto a private balcony, a spacious bedroom and one bathroom.

Located on Chiswick High Road itself and within half a mile of both Turnham Green and Chiswick Park tube stations.

### Features

- One Bedroom
- One Bathroom
- First Floor
- Private Balcony
- Wood Flooring
- Central Location

# Chiswick High Road, London, W4



TOTAL APPROX. FLOOR AREA 559 SQ.FT. (51.9 SQ.M.)