



PORTFOLIO
from



brown & merry

Flaxen Field, Weston Turville HP22 5GJ

1 Flaxen Field, Weston Turville, Buckinghamshire HP22 5GJ

A beautifully presented detached bungalow, located in the heart of Weston Turville, offering well thought out accommodation and attractive secluded gardens.



Entrance

The front door opens to an entrance lobby and spacious hall way beyond, doors to reception rooms and all bedrooms, two useful storage cupboards, wood effect flooring.

Living Room

A bright and spacious room with a modern feature fireplace, window to the rear aspect, French doors to the conservatory, access to the dining room, door to hall.

Kitchen

The kitchen is fitted with an extensive range of wall and base units with complementary work surface over, integral oven with hob and extractor, space and plumbing for washing machine, sink and drainer with mixer tap, tiled floor and splash backs, picture window over looking the rear garden.

Dining Room

The dining room is accessed both from the kitchen and sitting room and is a lovely entertaining space. Window to the conservatory, wood effect flooring.



Conservatory

A lovely versatile space with wonderful views of the pretty garden, tiled flooring, doors to a paved terrace, perfect for al fresco dining.

Utility

Space and plumbing for a washing machine, sink and drainer with tap over, additional storage cupboards with complementary work surfaces, door to side access and window to rear garden, tiled floor and splash backs.

Boot Room

Large full height storage/coats cupboard, tiled floor, personal door to garage, door to hall and door to side access.

Master Bedroom

A bright and spacious double bedroom, large window to the front aspect, built in cupboard, wood effect flooring. Door to en-suite.

En-suite shower room

Recently refitted with walk in, fully tiled shower cubicle, vanity unit with wash hand basin and storage below, wc, part tiled walls.

Bedroom Two

Another double bedroom, built in cupboard, window to front aspect, wood effect flooring.

Bedroom Three

A generous single bedroom, window to side aspect.

Family Bathroom

Recently refitted with a white suite, paneled bath with shower over, wash hand basin and wc, fully tiled to the shower area, the remainder of the walls are part tiled, tiled floor and window to side aspect.

Garage

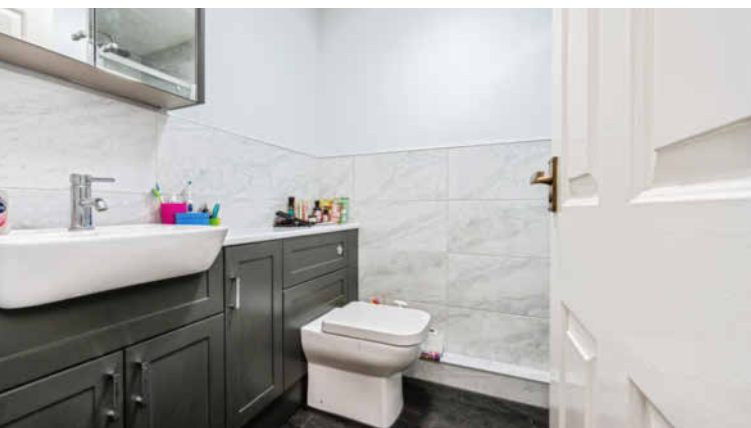
The garage has been modified to allow for the boot room, but still offers great storage for bikes etc.

Outside

To the front of the property a block paved driveway leads to the garage, an additional area of gravel provides of road parking for several vehicles.

To the rear of the property there is a lovely mature, secluded garden, crammed full of well stocked borders, sample trees, mature hedging, fully enclosed with paneled fencing, gated access to the front. The remainder of the garden is laid to lawn with several attractive seating areas and a summer house with power and light.





Location

Well located in the heart of Weston Turville village which is situated almost midway between Wendover and the county town of Aylesbury. The village offers several local shops, which cater for most day-to-day needs and are all within walking distance. There is also a local primary school, three public houses, a rugby club, popular golf club and reservoir for sailing and angling. There is a choice of railway stations at either Wendover or Stoke Mandeville for London Marylebone or from Tring station to London Euston. The county town of Aylesbury is approximately three miles distant providing a good range of shopping and entertainment facilities, together with grammar schools. The A41 offers a swift connection with the M25 (Junction 20) and M1.

Education

Buckinghamshire has been renowned for its schooling for many years, Weston Turville has a popular primary school, in addition Wendover has a strong selection of schools; Ofsted rated 'outstanding' primary schools, the well regarded John Colet secondary school and the catchment grammar schools, Aylesbury Grammar (boys), Sir Henry Floyd (mixed) and Aylesbury High School (girls).



Auctioneer Comments

This property is for sale by Modern Method of Auction allowing the buyer and seller to complete within a 56 Day Reservation Period. Interested parties' personal data will be shared with the Auctioneer (iamsold Ltd).

If considering a mortgage, inspect and consider the property carefully with your lender before bidding. A Buyer Information Pack is provided, which you must view before bidding. The buyer is responsible for the pack fee. For the most recent information on the Buyer Information Pack

fee, please contact the iamsold team.

The buyers signs a Reservation Agreement and makes payment for a Non-Refundable Reservation Fee of 4.5% of the purchase price inc. VAT, subject to a minimum of £6,600 inc. VAT. This Fee is paid to reserve the property to the buyer during the Reservation Period and is paid in addition to the purchase price. The Fee is considered within calculations for stamp duty. Services may be recommended by the Agent / Auctioneer in which they will receive payment from the service provider if the service is taken.



Total floor area 130.2 m² (1,401 sq.ft.) approx

This plan is for illustration purposes only and may not be representative of the property. Plan not to scale.

Powered by Focal

welcome to

1 Flaxen Field, Weston Turville, Buckinghamshire HP22 5GJ

A bright and spacious three bedroom detached bungalow, located in a tucked away position in the heart of Weston Turville. Beautifully presented throughout. Ample parking and garage storage to the front and a lovely secluded garden to the rear. Viewing essential.

For Sale by Modern Auction - T&C's apply

Subject to Reserve Price

- Buyers fees apply
- Fixed Timescales for Exchange & Completion
- The Modern Method of Auction

EPC Rating: C

Council Tax Band: F

Tenure: Freehold

PORTFOLIO
from


brown & merry



To find out more information or to arrange a viewing call

01296 624444

or email Wendover@brownandmerry.co.uk

Woollerton House, 7 High Street, Wendover, Aylesbury,
Buckinghamshire HP22 6DU

brownandmerry.co.uk

1. MONEY LAUNDERING REGULATIONS Intending purchasers will be asked to produce identification documentation at a later stage and we would ask for your co-operation in order that there is no delay in agreeing the sale. 2. These particulars do not constitute part or all of an offer or contract. 3. The measurements indicated are supplied for guidance only and as such must be considered incorrect. Potential buyers are advised to recheck measurements before committing to any expense. 4. We have not tested any apparatus, equipment, fixtures or services and it is in the buyers interest to check the working condition of any appliances. 5. Where an EPC, or a Home Report (Scotland only) is held for this property, it is available for inspection at the branch by appointment. If you require a printed version of a Home Report, you will need to pay a reasonable production charge reflecting printing and other costs. 6. We are not able to offer an opinion either written or verbal on the content of these reports and this must be obtained from your legal representative. 7. Whilst we take care in preparing these reports, a buyer should ensure that his/her legal representative confirms as soon as possible all matters relating to title including the extent and boundaries of the property and other important matters before exchange of contracts.

Trading name of Sequence (UK) Limited which is registered in England and Wales under company number 4268443, Registered Office is Cumbria House, 16-20 Hockliffe Street, Leighton Buzzard, Bedfordshire, LU7 1GN. VAT Registration Number is 500 2481 05.

