



Willow Road | | London | NW3 1TS

£4,100,000

**PARK & VALE**  
sales | lettings | management

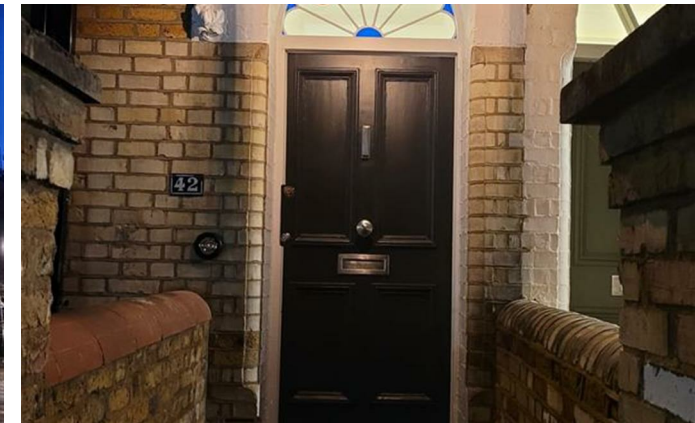
Willow Road |  
London | NW3 1TS  
£4,100,000

A most imposing end of terrace property located at the top of Willow Road and Corner of Gayton Crescent with impressive gothic garden side entrance. Extensive interior and exterior refurbishments completed 2024 to a meticulously high standard with period features maintained.

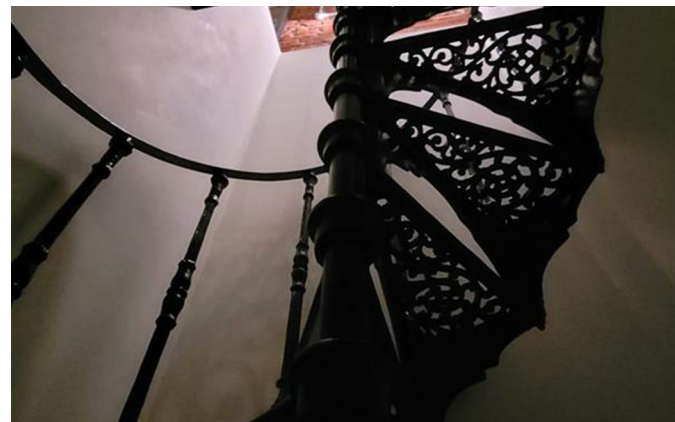
As you enter the raised ground floor, follow the entrance corridor to a floor to ceiling cupboard area for coats and storage. Enter via a columned entrance to the dining area with marble fireplace, antique chandelier, built-in Georgian style dresser and wood paneling framing a large window.

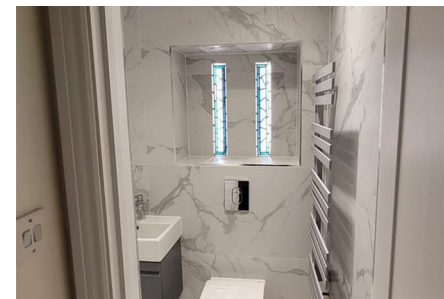
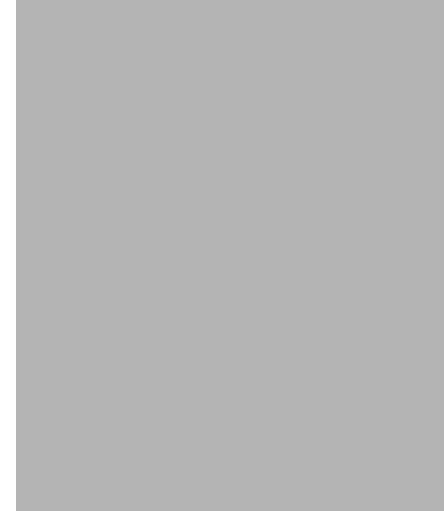
A 15th century stained-glass door feature leads to a guest powder room and more storage cupboards. The dining/entertaining area adjoins an open kitchen extending this entire floorspace to 28 feet in length with an abundance of light served by large windows to the front and rear.

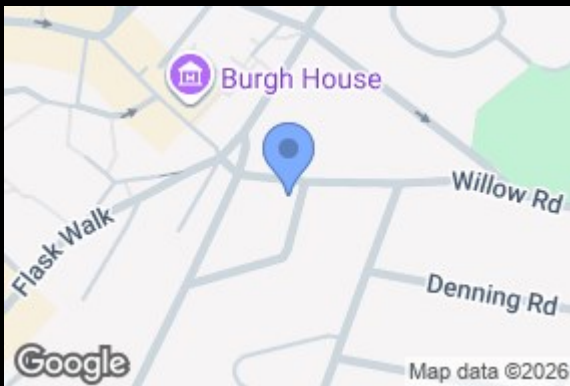
- Hampstead Village
- End of terrace
- Private Garden
- Historical features and fittings
- Chain free
- Recently undergone full refurbishment
- Air conditioning
- 5 bedrooms
- Rare side entrance











Energy Efficiency Rating		Current	Potential
Very energy efficient - lower running costs			
(92 plus) A			
(81-91) B			
(69-80) C		77	86
(55-68) D			
(39-54) E			
(21-38) F			
(1-20) G			
Not energy efficient - higher running costs			
England & Wales		EU Directive 2002/91/EC	

241 Maida Vale  
 London  
 W9 1QJ  
 0207 112 8323  
 info@parkandvale.co.uk