



Kelynack, St Just TR19

£725,000

🛏 4 🚿 2 🛋 4



Stunning cottage (formerly two cottages) within approximately an acre of land with a cabin and a pottery and studio within the grounds. An extraordinary opportunity to acquire this magical dwelling set in beautiful grounds that offer ideal growing spaces and a small orchard as well as very pretty gardens packed with sub-tropical plants and shrubs.



Key Features

- BEAUTIFUL FOUR BED COTTAGE
- POTTERY & STUDIO BUILDING
- FURTHER FIELD AVAILABLE (SEPARATE NEGOTIATION)
- FOUR RECEPTION ROOMS
- EPC - F
- APPROXIMATELY AN ACRE OF LAND
- CABIN / ANNEXE ACCOMMODATION
- HUGELY FLEXIBLE HOME FOR FAMILIES
- DRIVEWAY AND GARAGE
- COUNCIL TAX BAND - E

Kelynack, St. Just, Penzance, TR19

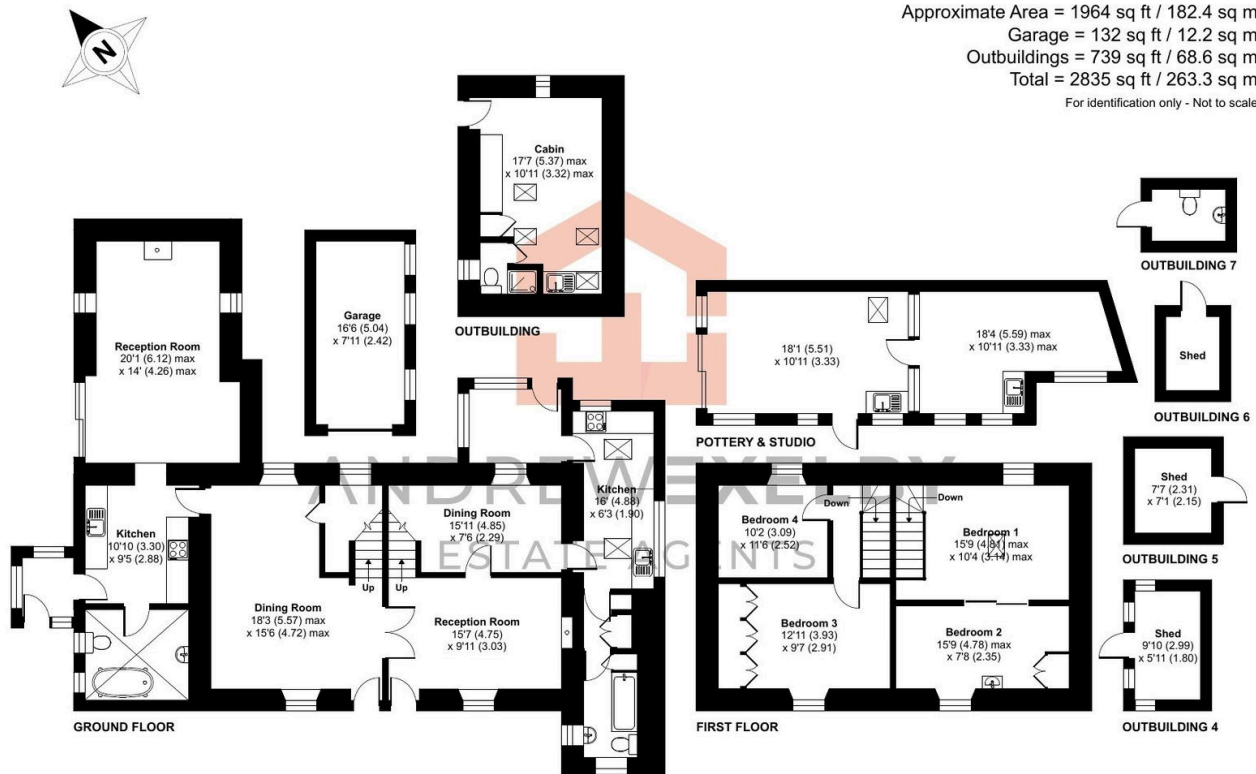
Approximate Area = 1964 sq ft / 182.4 sq m

Garage = 132 sq ft / 12.2 sq m

Outbuildings = 739 sq ft / 68.6 sq m

Total = 2835 sq ft / 263.3 sq m

For identification only - Not to scale



Floor plan produced in accordance with RICS Property Measurement 2nd Edition, Incorporating International Property Measurement Standards (IPMS2 Residential). © nchecom 2025. Produced for Andrew Exelby Estate Agents. REF: 1325930