



Parsonage Court, Highworth, SN6 7TJ

£110,000  
(Leasehold)

*Hanley's*

# Parsonage Court Highworth SN6 7TJ

A well presented first floor one bedroom apartment overlooking the communal gardens with far reaching views from the rear. Situated in the popular Parsonage Court development for the over 55's just a short level walk to the High Street and local amenities with accommodation comprising: Entrance hall with built-in storage cupboard and airing cupboard, living/dining room, fitted kitchen, shower room and double bedroom with built-in wardrobes. Further benefits include electric storage heating and recently fitted double glazed windows. Parsonage Court offers a 24 hour call care system, on-site house manager, laundry room, residents' lounge and conservatory, visitors cottage available to rent on request, communal gardens and residents parking. The property is offered for sale with NO ONWARD CHAIN.

Leasehold property: A lease of 99 years was granted in 1986. Maintenance charge of £1,573.08 paid every 6 months (September 2025 – February 2026). Ground rent £450 per annum.



**1 Shower Room**



**1 Bedroom**



**1 Reception**

**EPC: C 69**

**Council Tax Band: C**

**Tenure: Leasehold**

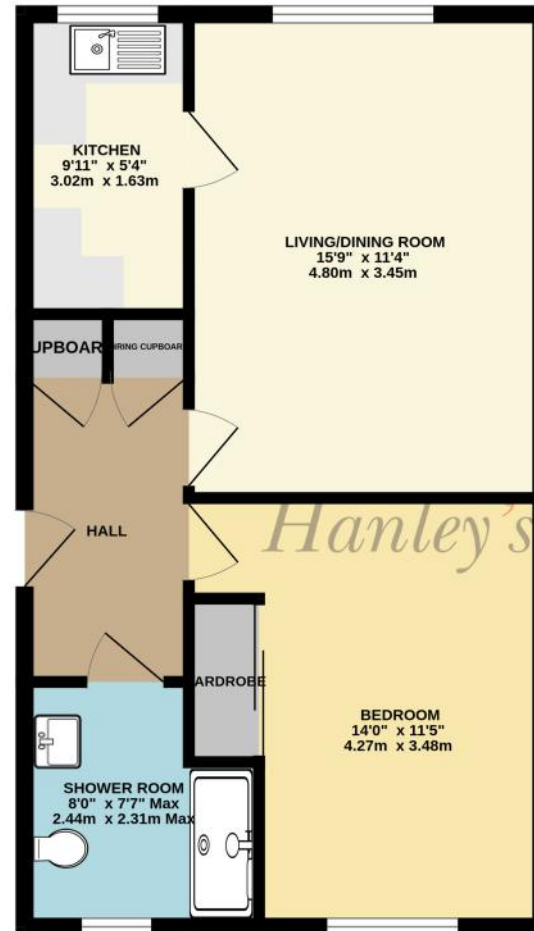


DISCLAIMER. These particulars, whilst believed to be accurate are set out as a general outline for guidance and do not constitute any part of an offer or contract. Intending purchasers should not rely on them as statements or representation of fact, but must satisfy themselves by inspection or otherwise as to their accuracy. No person in this firm's employment has the authority to make or give any representation or warranty in respect of the property. Floor plan measurements and distances are approximate only. We have not carried out a detailed survey nor tested the services, appliances or specific fittings. Your home is at risk if you do not keep up repayments on a mortgage or other loan secured on it.





GROUND FLOOR  
505 sq.ft. (46.9 sq.m.) approx.



TOTAL FLOOR AREA : 505 sq.ft. (46.9 sq.m.) approx.

Whilst every attempt has been made to ensure the accuracy of the floorplan contained here, measurements of doors, windows, rooms and any other items are approximate and no responsibility is taken for any error, omission or mis-statement. This plan is for illustrative purposes only and should be used as such by any prospective purchaser. The services, systems and appliances shown have not been tested and no guarantee as to their operability or efficiency can be given.  
Made with Metropix ©2025

