

Churchills

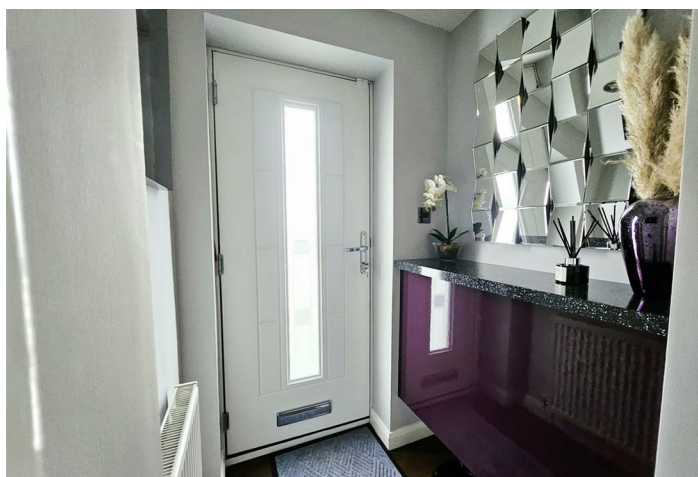


Wentworth Gardens

Swinton, Mexborough S64 8EP

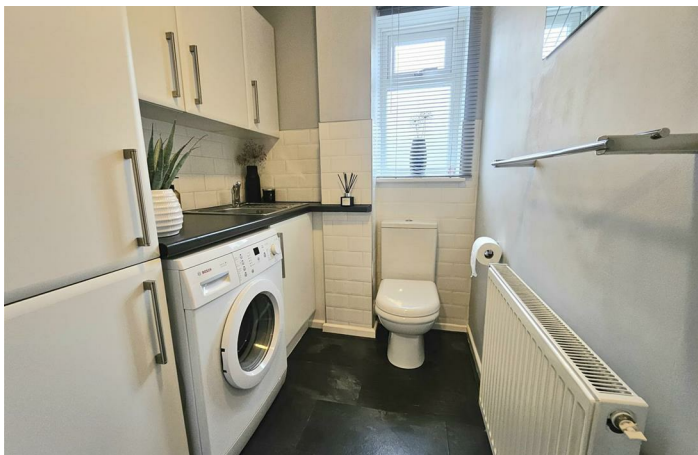
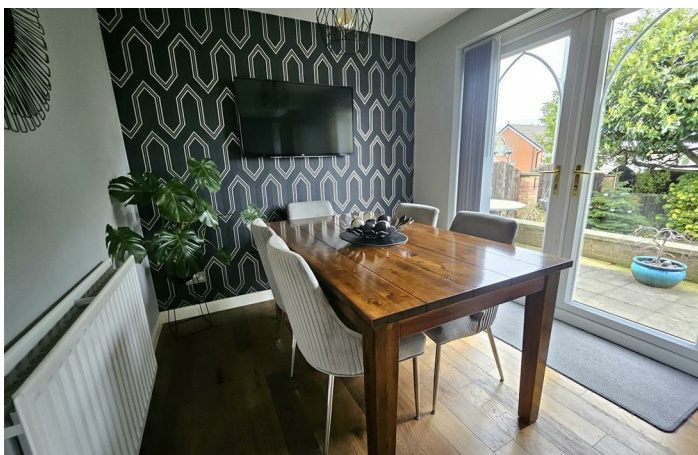
- FOUR DOUBLE BEDROOMS
- MODERN THROUGHOUT
 - UTILITY ROOM & WC
 - GARAGE & DRIVEWAY
- SPACIOUS LIVING
- KITCHEN & DINING AREA
- TWO BATHROOMS
- EPC RATING D

Offers In The Region Of £294,995 Freehold





Location



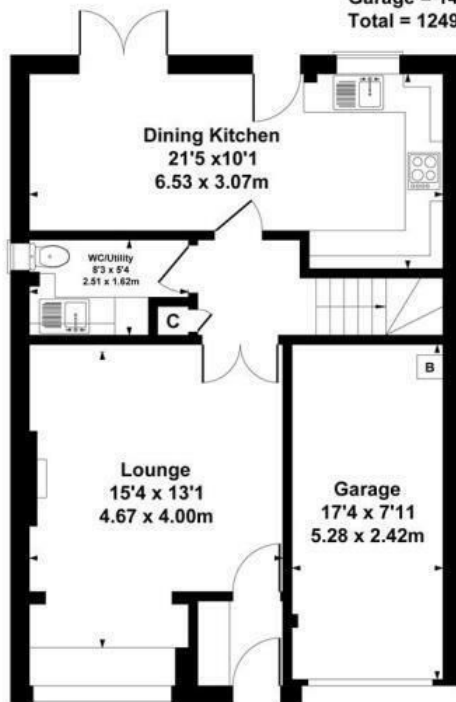


Local Authority RMBC
Council Tax Band D
EPC Rating D

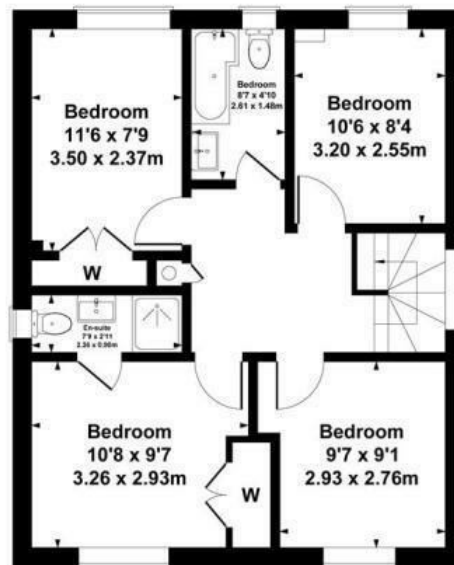


16 Wentworth Gardens, Swinton, S64 8EP

Approximate Gross Internal Area
Main House = 1109 sq ft - 103 sq m
Garage = 140 sq ft - 13 sq m
Total = 1249 sq ft - 116 sq m



GROUND FLOOR



FIRST FLOOR

Not to scale for layout reference only. All Measurements are Approximate Produced by As
Built Energy Surveys for Dunstons Estate Agents

Churchills Sales Office

16 High Street, Mexborough, South
Yorkshire, S64 9AS

Contact

01709 582880
Info@churchillsestateagents.com
www.churchillsestateagents.com

Agents Note: Whilst every care has been taken to prepare these particulars, they are for guidance purposes only. All measurements are approximate and for general guidance purposes only and whilst every care has been taken to ensure accuracy, they should not be relied upon and potential buyers/tenants are advised to recheck the measurements.