

# Lower Sloane Street

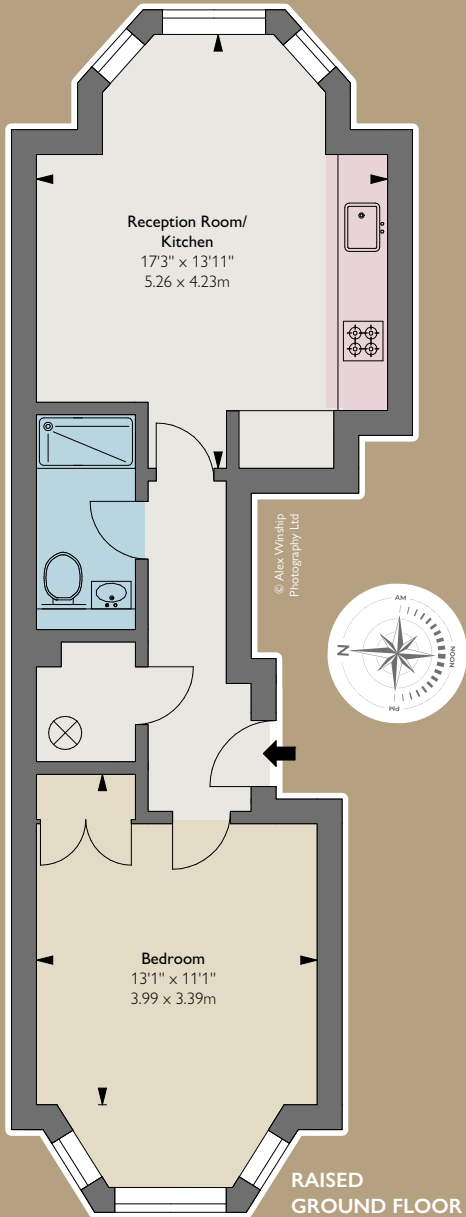
CHELSEA SW3





A very centrally located one bedroom flat situated to the south of Sloane Square and very near to the entrances of both the King's Road and Sloane Street. Sloane Square underground station is located approximately 500m from the flat. It would make for an ideal pied-à-terre or indeed a long term rental investment.

- Entrance hall
- Bedroom
- Shower room
- Open-plan kitchen and reception room
- Independent gas central heating and hot water
- Access to the private garden at the rear by way of a separate garden licence
- EPC: C



Approximate Gross Internal Area  
466 sq ft / 43.29 sq m

Guide Price: £875,000  
Tenure: Leasehold  
122 years (exp. 15/11/2148)

Ground Rent: Peppercorn  
Service Charge: Approximately  
£3,915 pa for year ending  
31/12/2026 including reserve fund

Local Authority: The Royal  
Borough of Kensington & Chelsea  
Council Tax: Band F