

oakheart



£100,000

Price Guide

Gowers End, Glemsford

NO ONWARD CHAIN *PRICE GUIDE £100,000 - £110,000* Oakheart are pleased to bring to the market this well presented one bedroom maisonette, offered for sale with no onward chain and available for immediate occupation.

The property offers a bright and comfortable living space, with a spacious lounge providing an ideal area for both

relaxing and entertaining. The kitchen is well arranged and comes complete with a cooker, while the bedroom is a generous double, offering ample space for furnishings. The bathroom is fitted with a modern suite, complementing the overall clean and tidy finish throughout the home.

This property has been maintained to a good standard, creating a welcoming and low-maintenance environment

suitable for a range of buyers. Its layout and presentation make it particularly appealing to first time buyers looking to step onto the property ladder, as well as investors seeking a reliable addition to their portfolio.

Call Oakheart now to arrange your internal viewing!





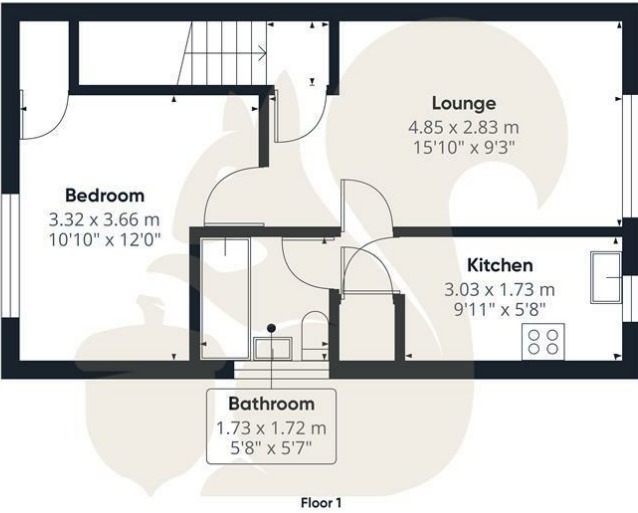
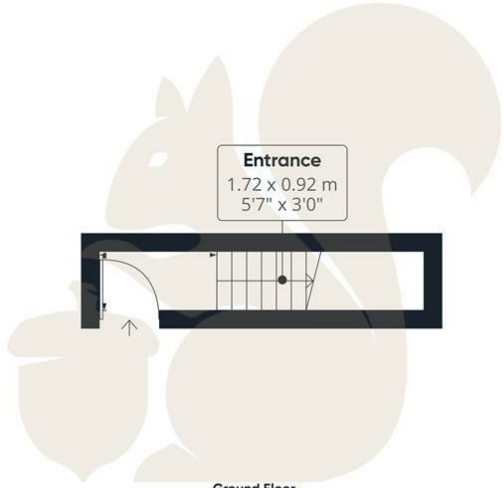


oakheart

Local Authority:
Babergh

Tenure:
Leasehold

Council Tax Band:
A



GLA¹⁾
45.88 m²
493.81 ft²

Total
45.88 m²
493.81 ft²

(1) Finished, above grade
Ext. wall thickness assumed: 15.24 cm/6 in

Calculations reference the ANSI-Z765 standard. Measurements are approximate and not to scale. This floor plan is intended for illustration only.

GIRAFFE360

Energy Efficiency Rating

	Current	Potential
<i>Very energy efficient - lower running costs</i>		
(92 plus) A		
(81-91) B		
(69-80) C		75
(55-68) D		
(39-54) E	54	
(21-38) F		
(1-20) G		
<i>Not energy efficient - higher running costs</i>		
England & Wales	EU Directive 2002/91/EC	

Agents Note: Whilst every care has been taken to prepare these particulars, they are for guidance purposes only. All measurements are approximate and are for general guidance purposes only and whilst every care has been taken to ensure their accuracy, they should not be relied upon.

Oakheart Sudbury
01787 322 322
sudbury@oakheart.co.uk
18 Market Hill, Sudbury, Suffolk, CO10 2EA

oakheart