



CULVERDEN ROAD, SW12

£525,000

- One double bedroom
- Immaculate condition
- Large private garden
- Access to tooting bec common
- Victorian conversion
- Energy rating: D

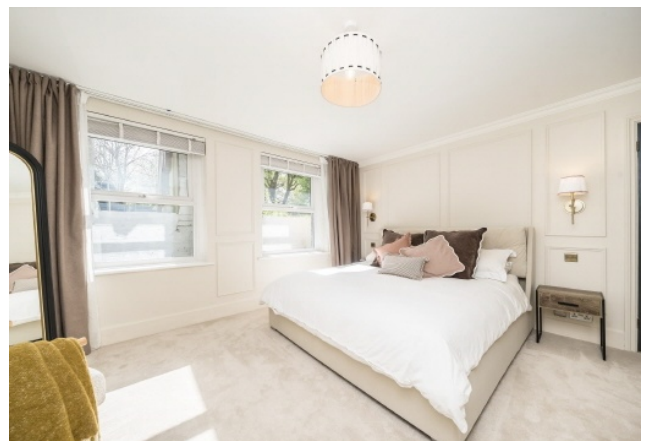




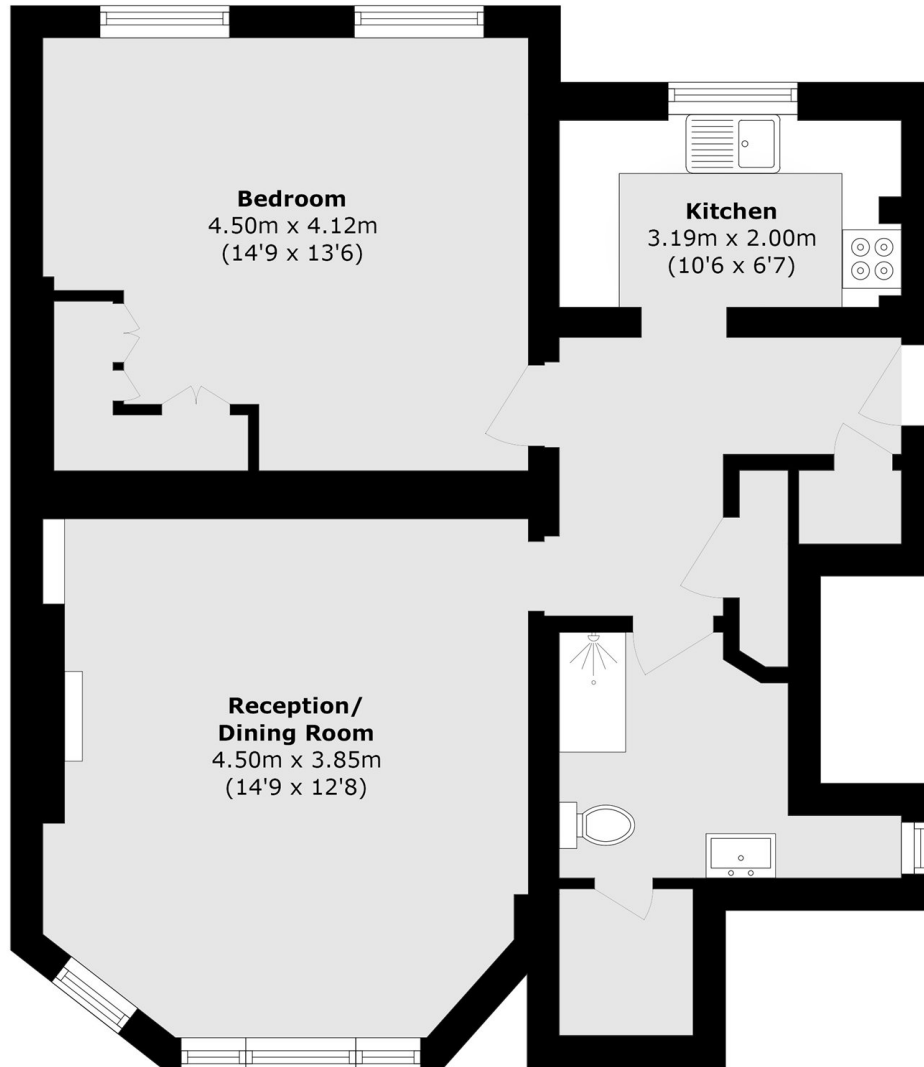
ABOUT THE HOME

Set in a charming Victorian building, is this beautifully presented one bedroom flat with a large private garden and direct access to Tooting Bec Common. This flat also benefits from a separate kitchen and spacious living room, modern bathroom and ample storage throughout.

Located on Culverden Road in Balham, this property is well situated for easy access to Balham mainline and underground stations offering excellent transport links into the City. The shops, bars and restaurants local to the area are also close by as well as the green open spaces of Tooting Bec Common making this a highly desirable location.







Total area (approx.): 64.2 sq. m (691.0 sq. ft)

JACKSONS BALHAM

8-11 Balham Station Road,
London, SW12 9SG
Sales: 020 8675 6555
Lettings: 020 8675 6565

Energy Rating: We aim to make our particulars both accurate and reliable. However they are not guaranteed; nor do they form part of an offer or contract. If you require clarification on any points then please contact us, especially if you're traveling some distance to view. Please note that appliances and heating systems have not been tested and therefore no warranties can be given as to their good working order.