



12 Sandys Road, Ombersley – WR9 0DY

Offers in Region of £320,000

HILLS
Estate Agents

12 Sandys Road

Ombersley, Droitwich

Positioned in the sought after village location of Ombersley is this spacious three bedrooms semi-detached family home with local amenities nearby as well as providing great access to nearby towns and cities. The property comprises entrance porch, open plan sitting room/dining room, WC, kitchen and conservatory. To the first floor are three bedrooms, shower room and WC. The property benefits from sitting on a good size corner plot with front, side and rear gardens, driveway and garage. A viewing is highly advised to appreciate the potential that can be unlocked at this property and the home is offered for sale with no onward chain.

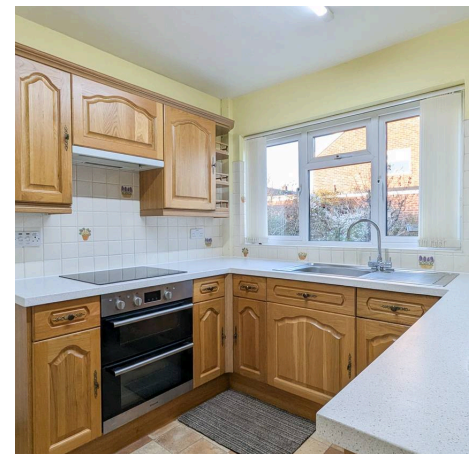
Council Tax band: C

Tenure: Freehold

EPC Energy Efficiency Rating: E

EPC Environmental Impact Rating: E

- Semi-detached home
- Sought after village location
- Three bedrooms
- Spacious accommodation
- Driveway, garage and gardens
- No onward chain





Ground Floor



First Floor

