



Leslie Road, N2
London

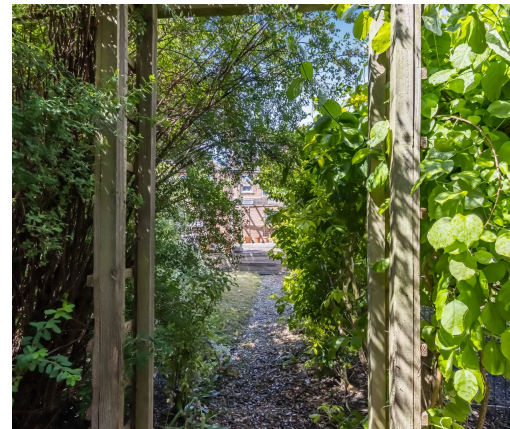
Guide Price
£600,000 - £625,000

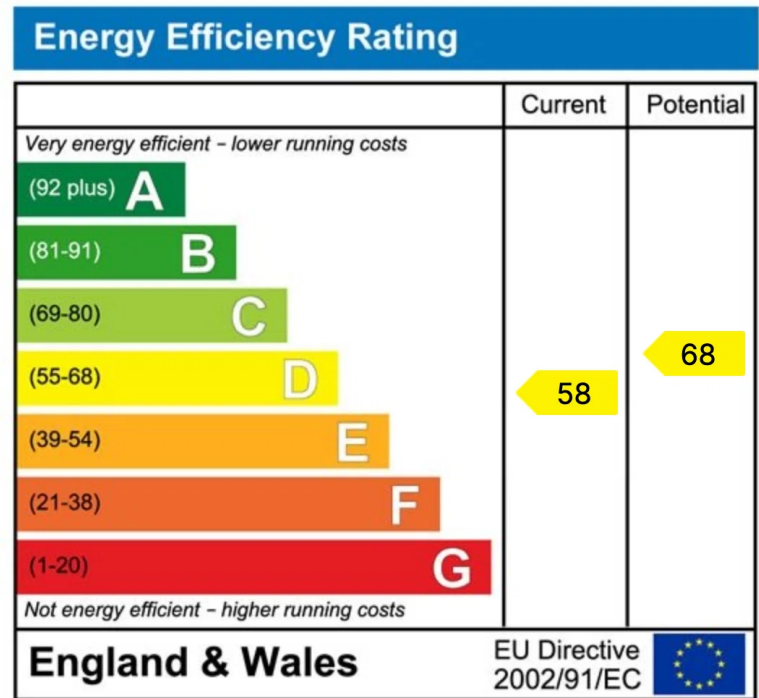
This charming Edwardian first-floor maisonette is situated on Leslie Road, N2, with its own private front door and direct access to a garden. Offering excellent proportions and period character, this two double-bedroom flat provides a fantastic opportunity for someone looking to create their ideal home in an excellent East Finchley location.

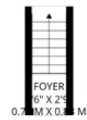
The large reception room to the front features a period fireplace and stripped wooden floorboards, while the kitchen/diner to the rear has a stable-style door with stairs leading directly down to the garden. There are two good-sized double bedrooms – the front bedroom benefits from a bay window and fireplace, and the rear bedroom enjoys pleasant views over the garden and also has stripped floorboards. A modern bathroom and separate WC complete the accommodation, with additional access to a loft providing ample storage space.

The property would benefit from some internal cosmetic works but offers a solid base with great potential and retains plenty of original charm.

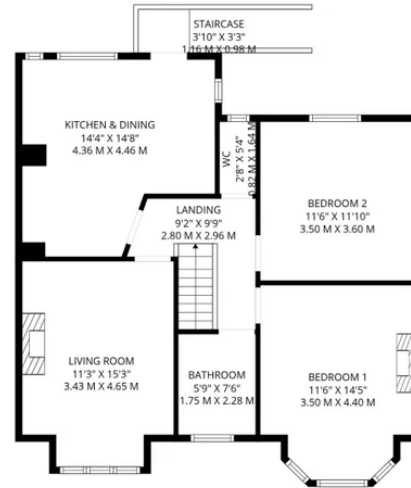
The location is superb. Leslie Road is quietly positioned yet just a short walk from East Finchley High Road and East Finchley Underground Station (Northern Line). East Finchley has a wonderful community vibe with a strong local feel, while the beautiful green spaces of Coldfall Wood and Cherry Tree Wood are easily accessible. This makes it a lovely spot for those who enjoy being close to nature and a real sense of neighbourhood, with excellent transport links and local amenities on the doorstep.







GROUND FLOOR



1ST FLOOR

Total: 799 sq. Ft, 75 m2

Ground Floor: 18 sq. Ft, 2 M2, 1st Floor: 781 sq. Ft, 73 m2

Excluded Areas: Decked Area: 192 sq. Ft, 18 M2, Staircase: 12 sq. Ft, 1 M2, Walls: 74 sq. Ft, 6 m2

FLOOR PLAN CREATED BY CUBICASA APP. MEASUREMENTS DEEMED HIGHLY RELIABLE BUT NOT GUARANTEED.



Amanda Walker

07817 598 309

amanda.walker@expuk.com

<https://amandawalker.exp.uk.com>