



Davies Properties



12 Dale View Close

Keighley, BD21 4UH

Price £230,000



12 Dale View Close

Keighley, BD21 4UH

Price £230,000



Your Next Chapter Starts Here!

Tucked away at the end of a quiet cul-de-sac, this semi-detached home has that rare quality of feeling bigger on the inside – and we mean 'properly' spacious, not estate agent spacious.

Step inside and you'll find rooms that actually work for real life. The kitchen-diner isn't just big – it's the kind of space where homework happens alongside dinner prep, where Saturday morning pancakes turn into lingering coffee, where friends end up perched on counters because nobody wants to leave the conversation. There's a ground floor bathroom too (the genius of which you'll appreciate during school-run mornings), plus a living room that's genuinely separate when you need some peace.

GROUND FLOOR

Entrance Hall

Step into a bright and airy entrance hall that sets the tone for the entire home. Natural light floods in through double-glazed windows, while warm wooden floors and stairs create an instantly inviting atmosphere. There's even smart storage built in to keep everything organised from the moment you walk through the door and a radiator to heat up the place.

Living Room

11'1" x 15'9" (3.38m x 4.80m)

Flooded with natural light from oversized double-glazed windows, this space combines contemporary laminate flooring with the cosy ambiance of a living flame gas fire - perfect for those nights when you just want to unwind at home. There's a radiator to keep things warm too.

Bathroom

5'5" x 7'3" (1.65m x 2.21m)

A clean three-piece bathroom with a tub and overhead shower, basin, and WC. There's a radiator to keep it warm, and the side window brings in plenty of natural light to keep things bright and airy.

Kitchen

9'2" x 11'10" (2.79m x 3.61m)

A well-equipped kitchen with plenty of storage and

sleek quartz worktops. It's got a ceramic hob, twin built-in ovens with extractor hood, built-in dishwasher and a composite sink with plumbing for a washing machine. The window offers great views across the valley - definitely the best feature of the room.

Open plan to:

Dining Area

10'8" x 8'11" (3.25m x 2.72m)

A practical utility space with Amtico flooring and side access to the outside—handy for muddy boots and keeping the mess contained. There's also a radiator to warm up the room.

FIRST FLOOR

Landing

A functional landing with side window for natural light and loft access for extra storage.

Bedroom 1

10'3" x 11'9" (3.12m x 3.58m)

A good-sized bedroom with a front-facing window that lets in plenty of light and a radiator to keep things warm.

Bedroom 2

7'8" x 8'9" (2.34m x 2.67m)

A comfortable bedroom with rear-facing views stretching across the Aire Valley - a nice spot to wake up to and a radiator to keep the room warm.

Bedroom 3

6'7" x 8'8" (2.01m x 2.64m)

A bright bedroom with a front-facing window and radiator to keep it cosy.

Bedroom 4

6'7" x 8'8" (2.01m x 2.64m)

Another bedroom with those same valley views out back - a solid space with plenty of natural light and a radiator.

Shower Room

5'1" x 5'11" (1.55m x 1.80m)

A modern en-suite with a walk-in shower, WC, and vanity unit. There's a heated towel rail and a rear window for ventilation and light.

EXTERIOR

A spacious back garden that's mostly lawn with a decked area for those summer evenings and a patio spot perfect for outdoor dining. The views across the Aire Valley are genuinely impressive. Out front, it's all low-maintenance with established shrubs, plus a driveway with parking for two cars and a detached garage.

OTHER INFORMATION

~ Tenure: Freehold

~ Council Tax Band: C

~ Parking: Driveway providing off-road parking for at least two vehicles leading to a single detached garage.

~ Broadband - according to the Ofcom website there is 'Standard', 'Superfast' and 'Ultrafast' broadband available.

~ Mobile Coverage - according to the Ofcom website there is 'good' outdoor mobile coverage from at least four of the UK's leading providers.



Road Map



Hybrid Map

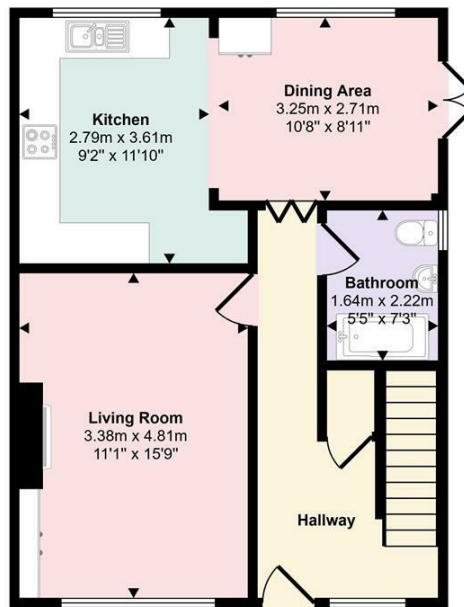


Terrain Map



Floor Plan

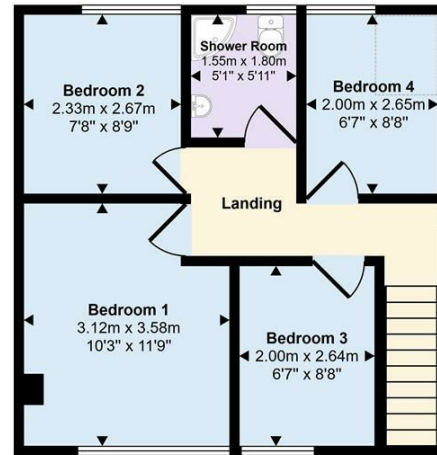
Approx Gross Internal Area
93 sq m / 998 sq ft



Ground Floor
Approx 53 sq m / 572 sq ft

Denotes head height below 1.5m

This floorplan is only for illustrative purposes and is not to scale. Measurements of rooms, doors, windows, and any items are approximate and no responsibility is taken for any error, omission or mis-statement. Icons of items such as bathroom suites are representations only and may not look like the real items. Made with Made Snappy 360.

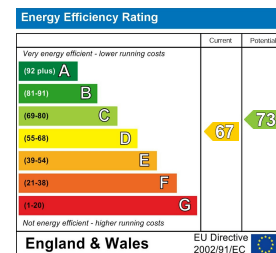


First Floor
Approx 40 sq m / 426 sq ft

Viewing

Please contact our Davies Properties Sales Office on 01535 872018 if you wish to arrange a viewing appointment for this property or require further information.

Energy Efficiency Graph



These particulars, whilst believed to be accurate are set out as a general outline only for guidance and do not constitute any part of an offer or contract. Intending purchasers should not rely on them as statements of representation of fact, but must satisfy themselves by inspection or otherwise as to their accuracy. No person in this firm's employment has the authority to make or give any representation or warranty in respect of the property.