

Sundridge Park Mansion

Sundridge Park, Bromley, BR1

Guide Price

£400,000 - £425,000



Guide Price £400,000 - £425,000. This beautifully presented top floor maisonette forms part of the prestigious 'Sundridge Park Mansion' estate and is set in stunning private grounds within a 30 minute commute by train of Central London. It offers a long lease of 168 years and 0 ground rent.

Accessed via a private patio and front door the main reception & dining room is spacious, bright and full of character, originally it was divided into two rooms but later converted into the current open plan living space. In our opinion this provides the opportunity for the property to be converted back into a 2 bedroom property should you wish. Moving through the property the large kitchen is well appointed with Siemens appliances and Italian Granite worktops whilst the bathroom is equally impressive with a mix of Italian Porcelain and glazed brick-bond tiling. The master bedroom features fitted wardrobes and exposed beams and there is the added benefit of a dedicated laundry room and separate storage room. Some further benefits include; air conditioning, underfloor heating, lift access, a Ladbury Bespoke Kitchen and Villeroy & Bosch bathroom fittings. Externally there is the private patio/terrace and 2 allocated parking spaces, in addition to the impressive grounds which include Grade II listed gardens and private woodland.



Originally dating back to the 1790's and designed by renowned Georgian architect John Nash, the estate as a whole comprises approximately 300 acres including the Mansion and Sundridge Park Golf Course. Substantially renovated and converted in 2022 to create 22 luxury apartments this exceptional property needs to be seen to



Tenure: Leasehold

Bedrooms: 1

Bathrooms: 1

Receptions: 1

Council Tax Band: D

- No Ground Rent
- Prestigious Private & Gated Development
- 2 Parking Spaces
- Beautifully Presented 815 SQ FT Maisonette
- Chain Free
- Air Conditioning & Underfloor Heating
- 2nd Floor with Lift Access
- Private Entrance & Terrace
- Part of the Historic 'Sundridge Park Mansion'
- 30 minute Commute to Central London



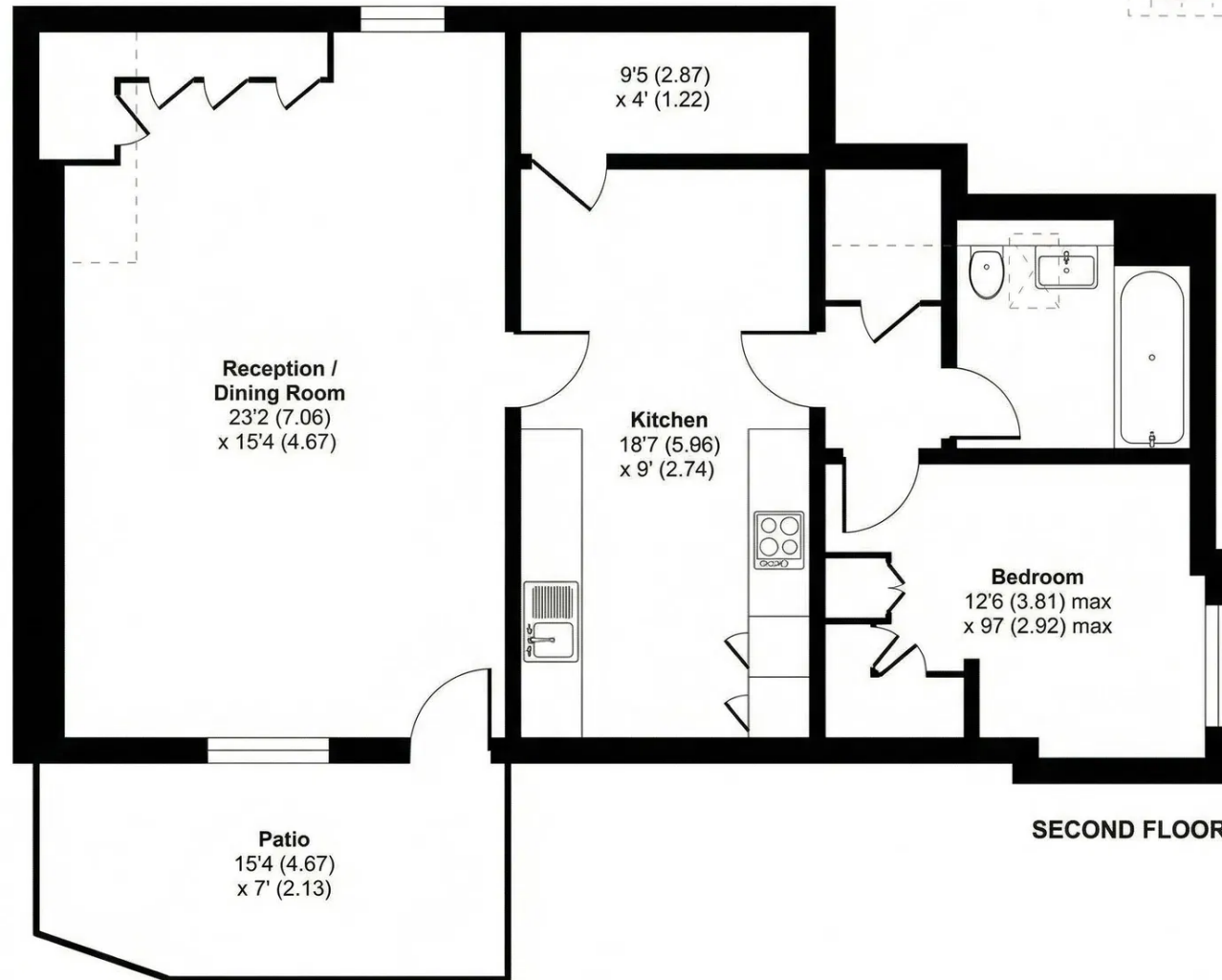
Sundridge Park Mansion, BR1

Approximate Area = 775 sq ft / 72 sq m

Limited Use Area(s) = 42 sq ft / 4 sq m

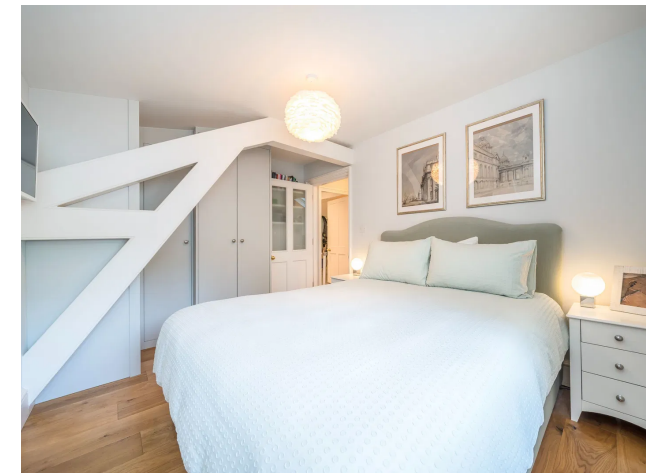
Total = 817 sq ft / 75.8 sq m

For identification only - Not to scale



SECOND FLOOR

Denotes restricted
head height





GOATLEY & HIRST

020 8464 8705
sales@goatleyhirst.com
www.goatleyhirst.com

1 Elmfield Park, Bromley, BR1 1LU