



2 Elderbank, Hugh Lane, Bradwell
Hope Valley, S33 9JB

2 Elderbank, Hugh Lane

A charming one bedroomed stone built mid terrace cottage, beautifully positioned in the village of Bradwell with a south facing cottage garden and stone built outbuilding.

Occupying a delightful setting with views across local countryside and located within easy access of excellent village amenities, this delightful cottage has accommodation arranged over two floors and is offered to the market with no onward chain.

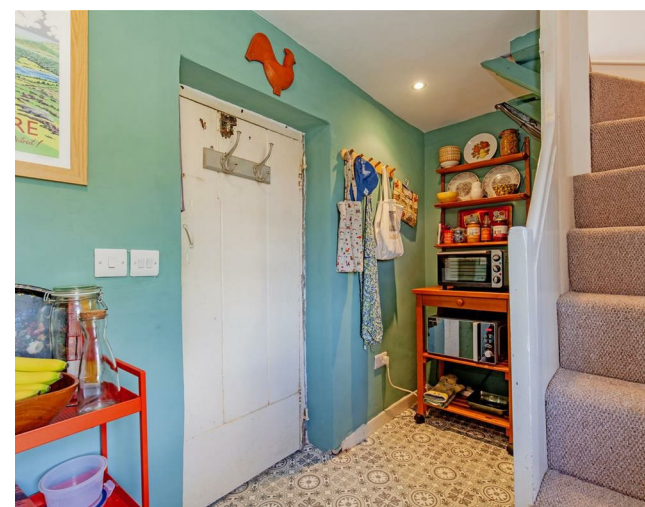
A stable door opens to the main reception room with a front facing window overlooking the garden, beams to the ceiling and Inglenook style fireplace with multifuel stove. The room has original fitted cabinetry and space for dining table and chairs. A door opens to the kitchen which features a range of modern units with worktops over incorporating two burner hob, sink and drainer and space for an undercounter fridge. The room features under stair storage and a rear facing window, enjoys views across the Hope Valley to Win Hill.

Stairs rise to the first floor, landing with further rear facing window and access to the attic. There is a spacious double bedroom with a feature fireplace in which there is ample seating space to enjoy views of the cottage gardens and Bradwell Edge, in the distance. Accessed off the landing is the shower room which incorporates a low flush WC, pedestal wash basin, shower enclosure with Mira sport electric shower and heated towel rail

Outside to the front of the property is a south facing cottage garden laid to lawn with floral border and fruit tree. Within the garden is a lockable store and to the side of the property is a stone built outbuilding.

Mains electricity, Mains water and drainage. No gas however this could easily be reinstated.

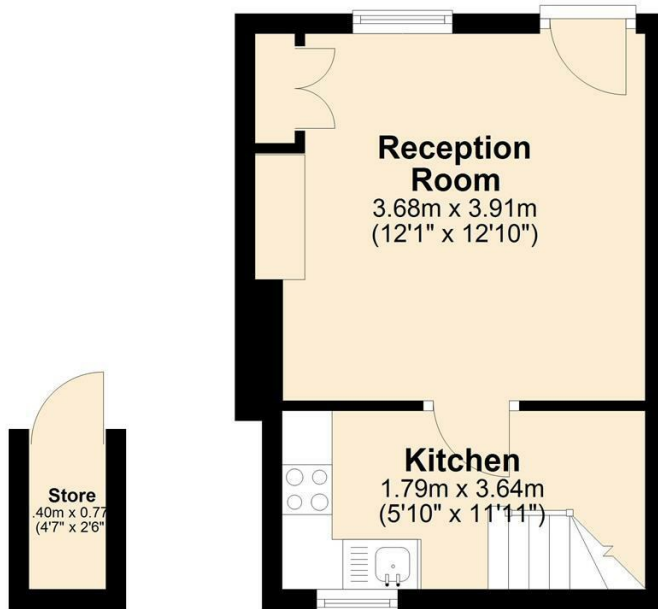
- Stunning one bedroomed terraced cottage in the village of Bradwell
- Sitting room with multifuel stove and dining area
- South facing cottage garden
- Kitchen with modern units
- Shower room
- Spacious double bedroom with seating to enjoy the view
- UPVC double glazing
- Short walk to excellent village amenities
- Stone built outbuilding
- Offered to the market with no onward chain





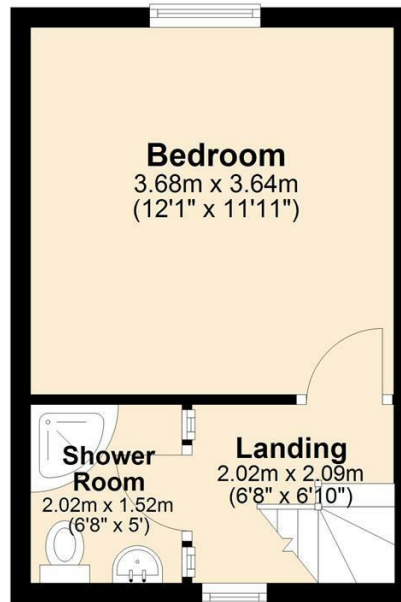
Ground Floor

Approx. 22.3 sq. metres (240.2 sq. feet)



First Floor

Approx. 20.2 sq. metres (217.8 sq. feet)



Total area: approx. 42.5 sq. metres (458.0 sq. feet)



Bakewell
3 Royal Oak Place
Matlock Street
Bakewell DE45 1HD
T: 01629 700699
E: bakewell@elr.co.uk

Banner Cross
888 Ecclesall Road
Banner Cross
Sheffield S11 8TP
T: 01142 683388
E: bannercross@elr.co.uk

Dore
33 Townhead Road
Sheffield
S17 3GD
T: 0114 2362420
E: dore@elr.co.uk

Hathersage
Main Road, Hathersage
Hope Valley
Derbyshire S32 1BB
T: 01433 651888
E: peakdistrict@elr.co.uk

Rotherham
149 Bawtry Road
Wickersley
Rotherham S66 2BW
T: 01709 917676
E: wickersley@elr.co.uk

**EADON
LOCKWOOD
& RIDDLE**
ESTD 1840