



**Farm Field Place, Herstmonceux Hailsham BN27 4GG**



**welcome to**

## **Farm Field Place, Herstmonceux Hailsham**

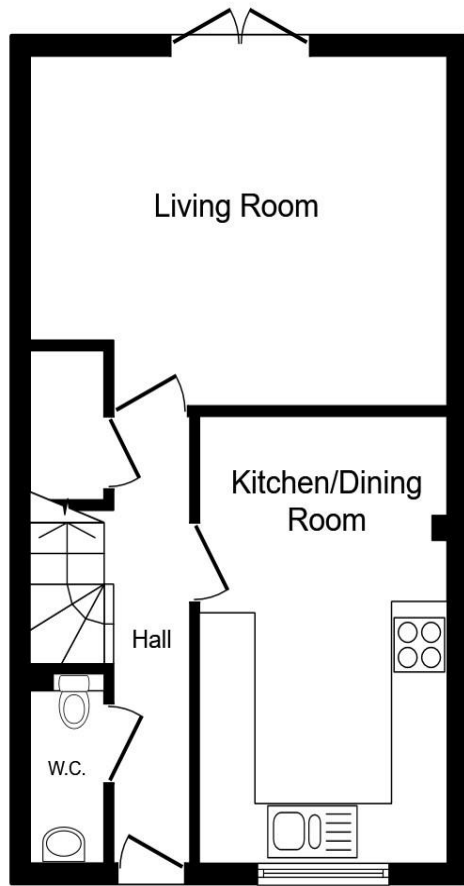
Farm Field Place is an exceptional collection of 21 beautifully designed one, two, three and four bedroom detached and semi-detached homes, nestled beside mature woodland on the edge of the picturesque village of Herstmonceux.

Thoughtfully crafted to combine modern luxury with timeless village charm, these superb new homes offer stylish, well-proportioned interiors designed for contemporary living. From spacious kitchen/dining rooms perfect for entertaining, to generous living areas and carefully planned bedroom accommodation, each home has been finished with attention to detail to provide comfort, practicality and elegance in equal measure.

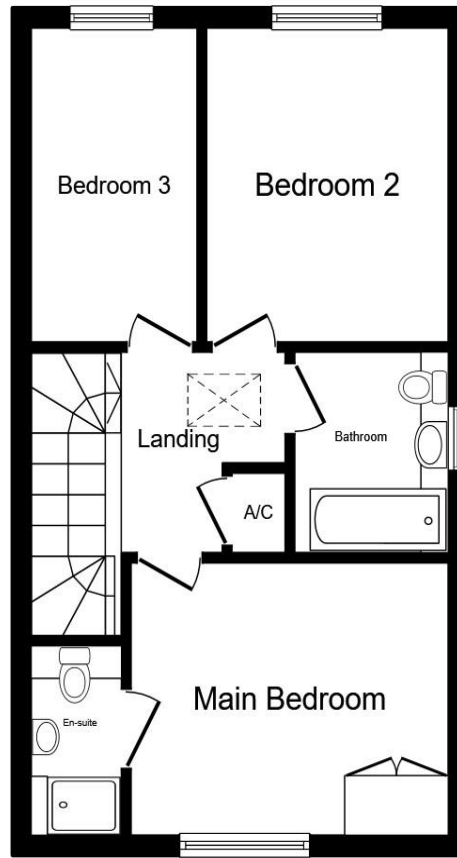
Set within the heart of East Sussex countryside, Herstmonceux is celebrated for its rich history and strong sense of community. The magnificent moated Herstmonceux Castle, the renowned The Observatory Science Centre and the historic Windmill Hill are all close by, while the village itself offers a selection of independent shops, cafés, traditional pubs and a popular fortnightly market.

Blending rural tranquility with superb connectivity, Farm Field Place presents a rare opportunity to enjoy refined country living in one of East Sussex's most desirable village settings.





**Ground Floor**



**First Floor**

**Location**

**Entrance Hall**

**Cloakroom**

**Living Room**

17' 2" x 14' 2" ( 5.23m x 4.32m )

**Kitchen / Dining Room**

17' 5" x 9' 5" ( 5.31m x 2.87m )

**Stairs To First Floor Landing**

**Master Bedroom**

12' 9" x 11' ( 3.89m x 3.35m )

**En Suite**

**Bedroom Two**

12' 5" x 9' 7" ( 3.78m x 2.92m )

**Bedroom Three**

12' 5" x 6' 9" ( 3.78m x 2.06m )

**Bathroom**

**Rear Garden**

**Disclaimer**

This floor plan is for illustrative purposes only. It is not drawn to scale. Any measurements, floor areas (including any total floor area), openings and orientation are approximate. No details are guaranteed, they cannot be relied upon for any purpose and they do not form part of any agreement. No liability is taken for any error, omission or misstatement. A party must rely upon its own inspection(s). Powered by [www.propertybox.io](http://www.propertybox.io)



welcome to

## Farm Field Place, Herstmonceux Hailsham

- Brand new three bedroom semi detached family home
- Close proximity to the village centre offering a selection of independent shops, cafés and traditional pubs.
- Each home has been finished with attention to detail to provide comfort, practicality and elegance
- Fully fitted modern kitchen with integrated appliances including an induction hob, extractor, oven, fridge/freezer, dishwasher and washing machine.
- Driveway providing ample off road parking

Tenure: Freehold EPC Rating: Exempt



Please note the marker reflects the postcode not the actual property

**view this property online** [fox-and-sons.co.uk/Property/HAI110466](https://fox-and-sons.co.uk/Property/HAI110466)



Property Ref:  
HAI110466 - 0003

1. MONEY LAUNDERING REGULATIONS Intending purchasers will be asked to produce identification documentation at a later stage and we would ask for your co-operation in order that there is no delay in agreeing the sale. 2. These particulars do not constitute part or all of an offer or contract. 3. The measurements indicated are supplied for guidance only and as such must be considered incorrect. Potential buyers are advised to recheck measurements before committing to any expense. 4. We have not tested any apparatus, equipment, fixtures or services and it is in the buyers interest to check the working condition of any appliances. 5. Where an EPC, or a Home Report (Scotland only) is held for this property, it is available for inspection at the branch by appointment. If you require a printed version of a Home Report, you will need to pay a reasonable production charge reflecting printing and other costs. 6. We are not able to offer an opinion either written or verbal on the content of these reports and this must be obtained from your legal representative. 7. Whilst we take care in preparing these reports, a buyer should ensure that his/her legal representative confirms as soon as possible all matters relating to title including the extent and boundaries of the property and other important matters before exchange of contracts.

Fox & Sons is a trading name of Sequence (UK) Limited which is registered in England and Wales under company number 4268443, Registered Office is Cumbria House, 16-20 Hockliffe Street, Leighton Buzzard, Bedfordshire, LU7 1GN. VAT Registration Number is 500 2481 05.

  
fox & sons



**01323 843554**



[Hailsham@fox-and-sons.co.uk](mailto:Hailsham@fox-and-sons.co.uk)



16 High Street, HAILSHAM, East Sussex, BN27 1BJ



[fox-and-sons.co.uk](https://fox-and-sons.co.uk)