



Altura Tower
Bridges Court Road, SW11

CHESTERTONS





This newly renovated bright and airy two-bedroom, two-bathroom apartment is located on the 7th floor of the award winning Bridges Wharf development.

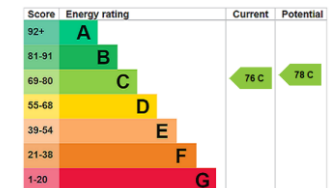
The accommodation comprises of an open plan living room and kitchen that has built in appliances, great storage and worktop space. The two bedrooms are both double rooms, the master benefits from built in storage and an en-suite shower room. The apartment is completed with a modern family bathroom and storage cupboard in the hallway. The property benefits from floor to ceiling windows as well as winter garden offering spectacular views across London and the river Thames.

The apartment comes with a parking space in the underground carpark. The development also benefits from having a secure entry system, 24 hour concierge and well-maintained communal gardens.

Location of the development is fantastic, with the Thames path just on your doorstep, Wandsworth and Battersea Bridges are close to hand for access over the river. Transport is also close at hand with the river taxi a short walk away at St Mary's Pier providing waterborne access to the city. Clapham Junction is just 0.6 miles away also providing mainline access to the centre of London and the wider country.

- Two bedrooms
- 1070sq ft
- Private underground parking
- Winter garden
- Two bathrooms

Asking Price £700,000

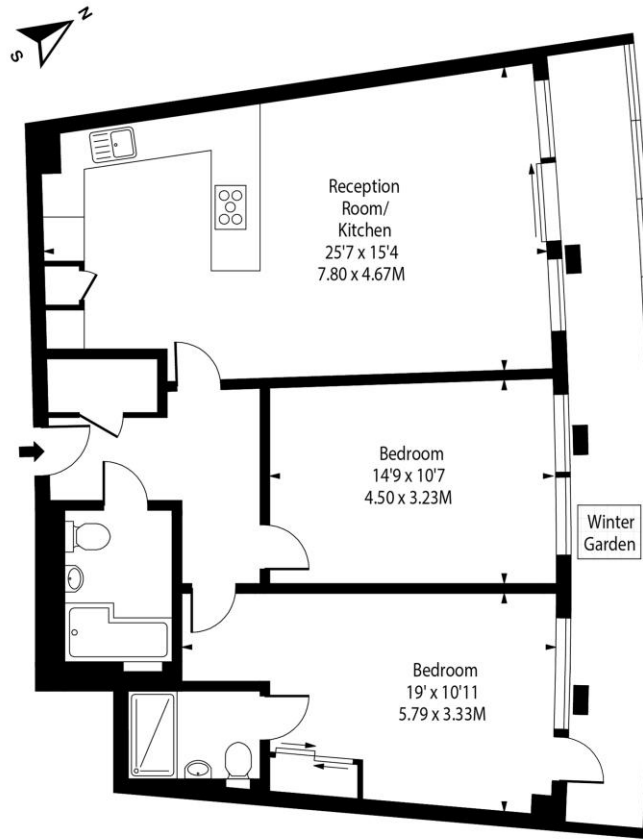


Tenure: Leasehold 130 years 1 months
Service Charge: TBC
Ground Rent: TBC
Local Authority: Wandsworth Council
Council Tax Band: F

Chestertons Battersea Park & Nine Elms Sales

62-64 Battersea Bridge Road
 London
 SW11 3AG
 batterseapark@chestertons.co.uk
 0203 040 8700
 chestertons.co.uk

Altura Tower, SW11



Seventh Floor

Approx Gross Internal Area **1070 Sq Ft - 99.40 Sq M**

Includes Limited Use Area - 19 Sq Ft
Drawn in Accordance with IPMS 3B: Residential
Illustration For Identification Purposes Only - Not to Scale
www.homespacestudio.co.uk - Ref. No. 54541



Chesterton UK Services Limited trading as Chestertons for themselves and for the vendor of this property whose agents they are, give notice that (i) these particulars do not constitute any part of an offer or contract, (ii) all statements contained within these particulars are made without responsibility on the part of Chestertons or the vendor, (iii) whilst made in good faith, none of the statements contained within these particulars are to be relied upon as a statement or representation of fact, (iv) any intending purchasers must satisfy themselves by inspection or otherwise as to the correctness of each of the statements contained within these particulars, (v) the vendor does not make or give either Chestertons or any person in their employment any authority to make or give representation or warranty whatsoever in relation to this property. Wide angle lenses may be used. ©Copyright Chestertons | Chesterton UK Services Limited | Registered Office 5th Floor, The Lantern, 75 Hampstead Road, London, NW1 2PL Registered Company Number 05334580.



This paper is 100% recyclable