



Newton Place, E14

£525,000

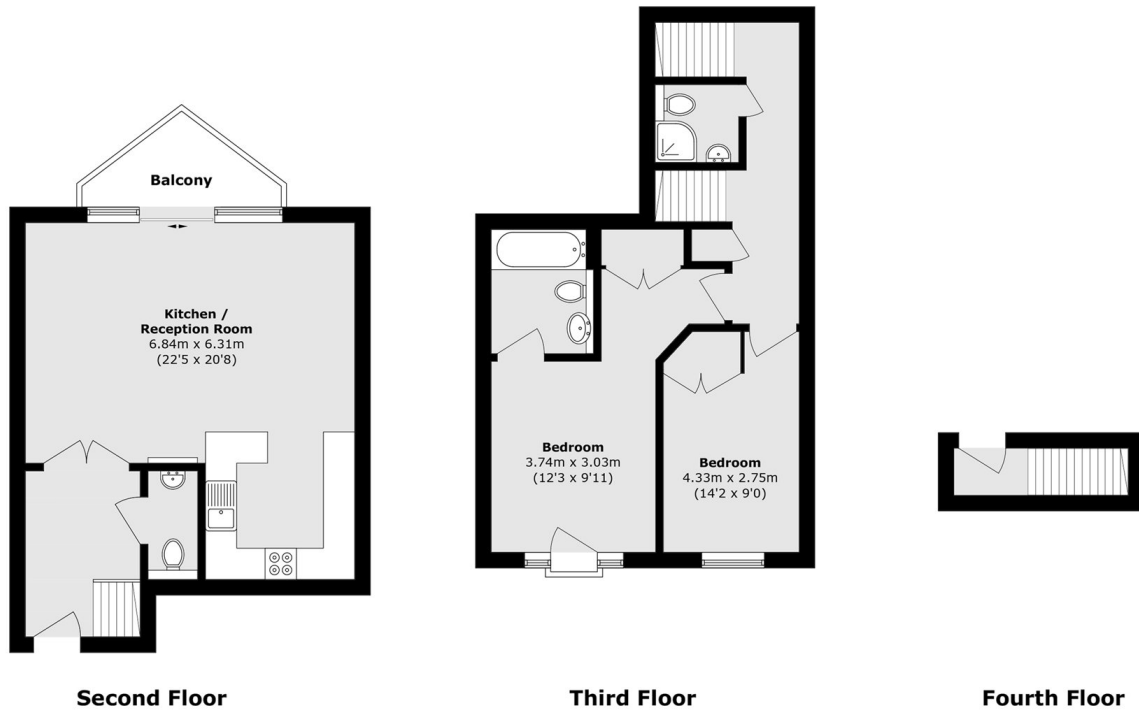
Offered to the market in immaculate condition is this spacious two-bedroom home, arranged over two floors and extending to over 1,000 sq ft. The property benefits from a private balcony with river views, a refitted kitchen and bathrooms, covered allocated parking, a residents' gym and a 24-hour concierge service.

The property is ideally located for excellent transport links, including the DLR, Jubilee Line, Elizabeth Line, Thames Clipper river service and a variety of bus routes, providing easy access across London. Canary Wharf is within close proximity, offering a wide range of shops, restaurants and leisure facilities, while the nearby Thames Path and The O2 provide further options for riverside walks and entertainment.

Features

- 1033 Square Feet
- Gated Riverside Development
- Secure Allocated Parking
- Private Balcony
- Concierge Service
- Residents Gym

Newton Place, London, E14



Total area (approx.): 96.0 sq. m (1033.3 sq. ft)

Balcony area (approx.): 4.2 sq. m (45.2 sq. ft)