



WALES FARM ROAD, W3

£2,500 pcm

Available now, this recently refurbished, large three-bedroom, one-bathroom semi-detached house offers spacious living with massive front and back gardens. Offered unfurnished or part-furnished, this property provides flexibility to suit your needs. Located just moments from North Acton (Central) and Acton Mainline (Elizabeth) Stations, commuting is convenient

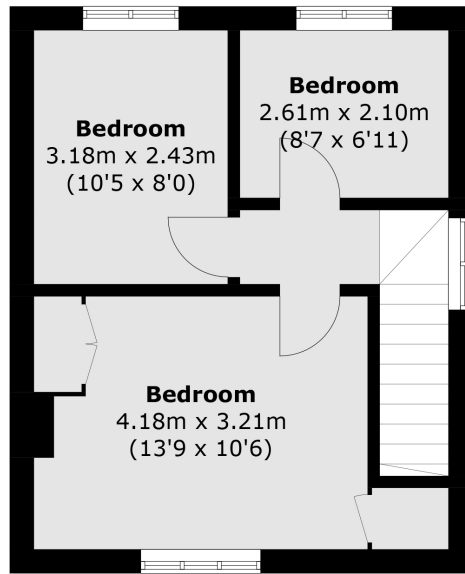


ABOUT THE HOME

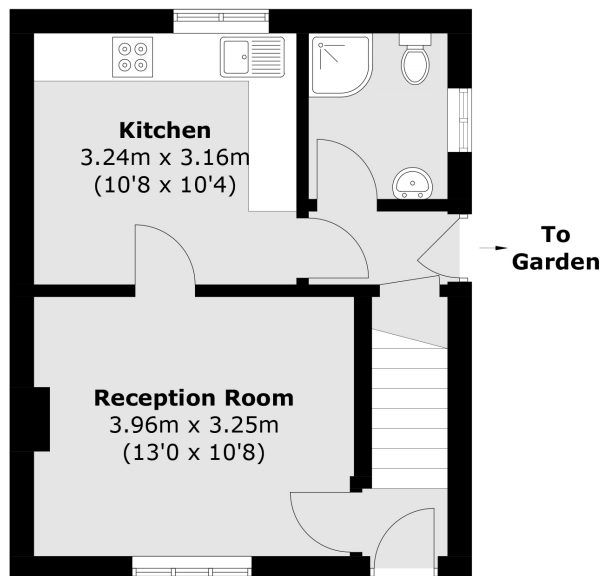
Available now, this recently refurbished, large three-bedroom, one-bathroom semi-detached house offers spacious living with massive front and back gardens. Offered unfurnished or part-furnished, this property provides flexibility to suit your needs. Located just moments from North Acton (Central) and Acton Mainline (Elizabeth) Stations, commuting is convenient and efficient. Additionally, on-street parking is available, and high street amenities are within walking distance, making this an ideal family home in a vibrant and accessible area.







First Floor



Ground Floor

Total area (approx.): 67.9 sq. m (730.9 sq. ft)

LiFE RESIDENTIAL

203 Trentham Court, Victoria
Road, London, W3 6BT
Sales: 020 3668 1112
Lettings: 020 3668 1111

Energy Rating: D. We aim to make our particulars both accurate and reliable. However they are not guaranteed; nor do they form part of an offer or contract. If you require clarification on any points then please contact us, especially if you're traveling some distance to view. Please note that appliances and heating systems have not been tested and therefore no warranties can be given as to their good working order.