

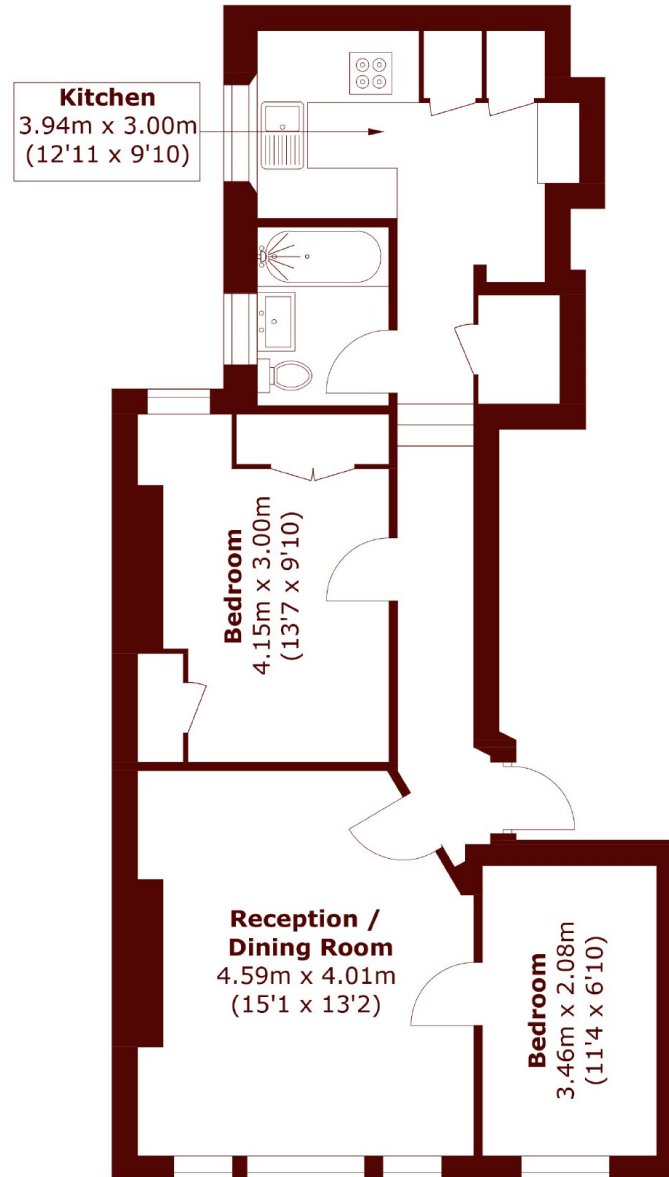


## Oxford & Cambridge Mansions, NW1

£630,000



- Two Double Bedrooms
- On-site Porter
- Good Transport Links
- Wood Flooring Throughout
- Large Reception Room
- Ample Natural Light



Total area (approx.): 59.6 sq. m (641.5 sq. ft)

## Marsh & Parsons Marylebone & Mayfair

94 Baker Street, London,  
W1U 6FZ  
020 7935 1775