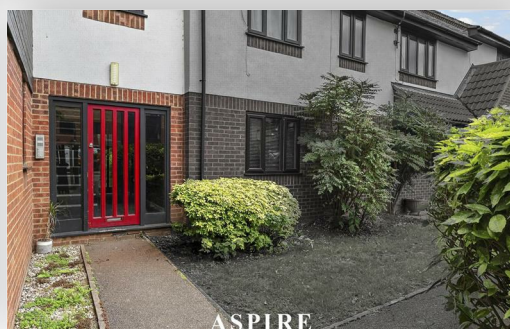
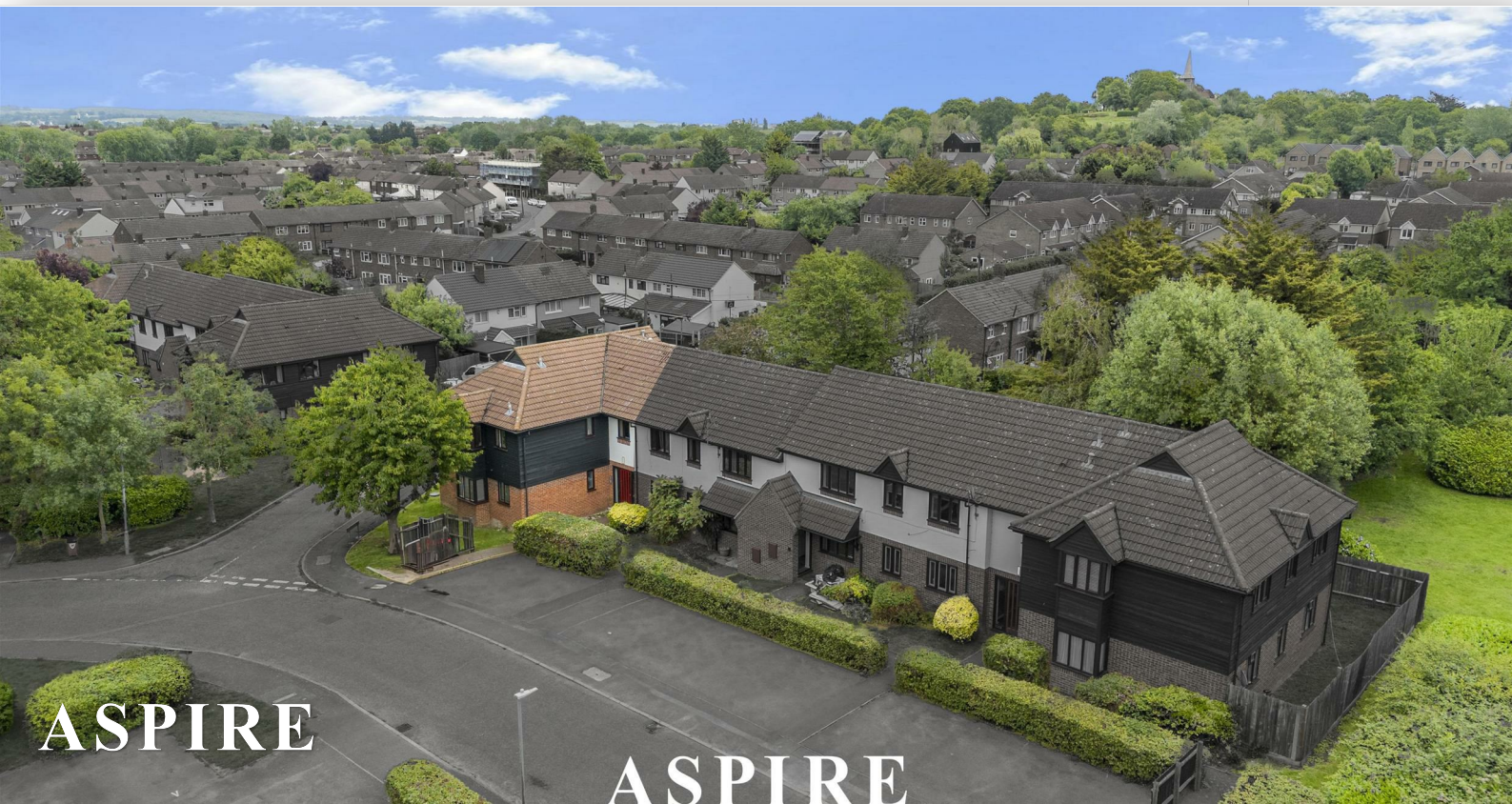


**To arrange a viewing contact us
today on 01268 777400**



Copperfields, Basildon Asking price £180,000

Aspire Estate Agents Basildon are delighted to present this stunning one-bedroom apartment ideally situated close to Laindon Train Station, Gloucester Park, and Basildon Sporting Village, with excellent transport links to Basildon town centre and the A127.

Beautifully presented throughout, the accommodation comprises a welcoming entrance hallway with useful storage, a stylish modern bathroom suite, and a contemporary fitted kitchen featuring a range of integrated appliances. The spacious and immaculate lounge/diner provides an excellent space for relaxing and entertaining, while the generous double bedroom benefits from fitted wardrobes and a dedicated dressing area.

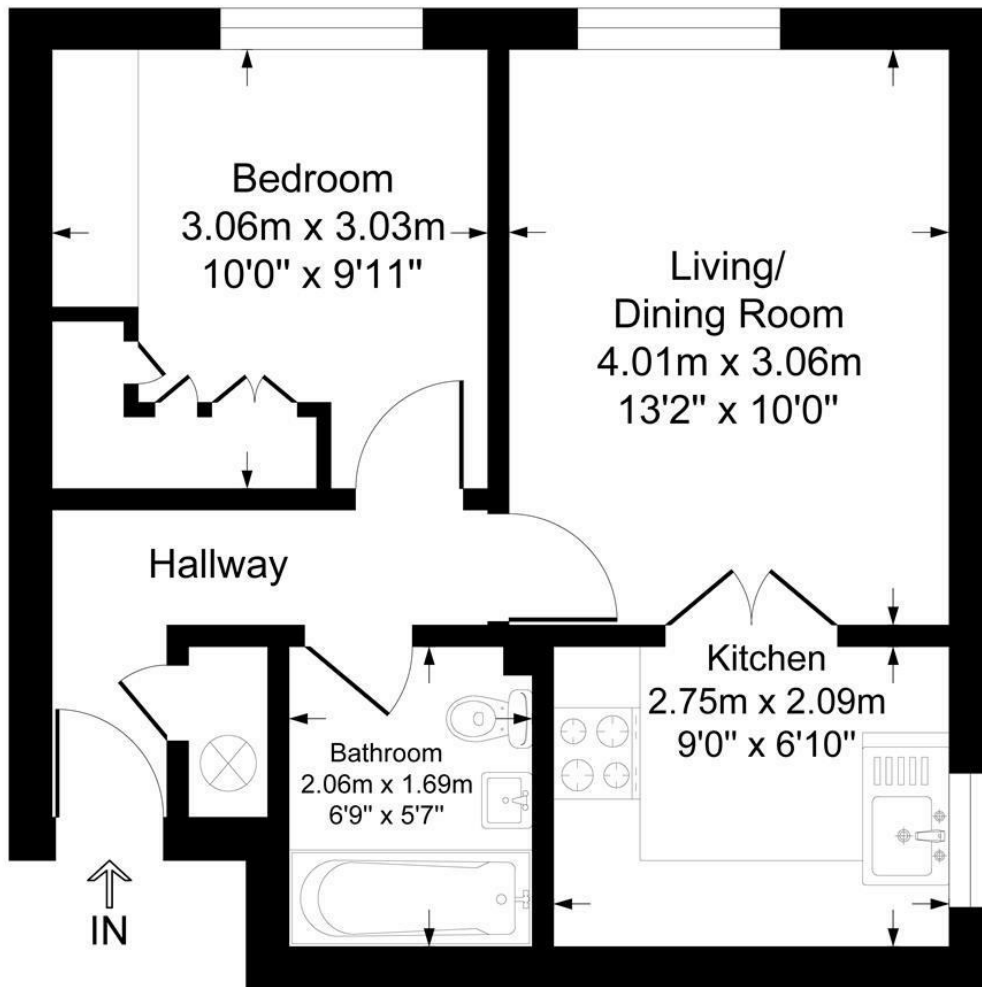
Further advantages include double glazing throughout and a superb decorative finish, making this a truly move-in-ready home.

Externally, residents can enjoy well-maintained communal gardens, allocated parking, and an abundance of visitor parking spaces.

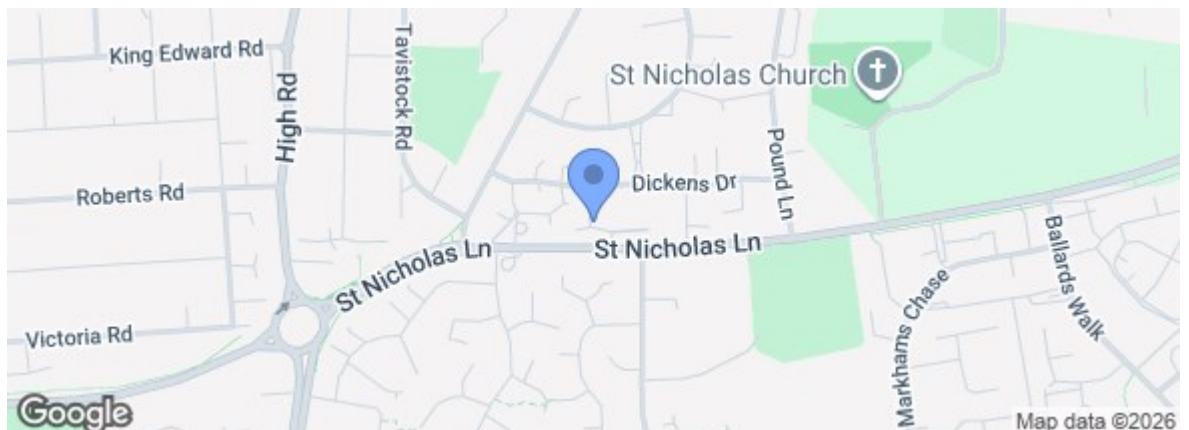
An ideal purchase for first-time buyers, commuters, or investors alike, early viewing is highly recommended.

Copperfields

Approximate Gross Internal Floor Area = 37.5 sq m / 404 sq ft



Energy Efficiency Rating		Current	Potential
Very energy efficient - lower running costs	(92 plus) A		
(81-91) B			
(69-80) C			
(55-68) D			
(39-54) E			
(21-38) F			
(1-20) G			
Not energy efficient - higher running costs			
England & Wales		EU Directive 2002/91/EC	
Environmental Impact (CO ₂) Rating			
Very environmentally friendly - lower CO ₂ emissions	(92 plus) A		
(81-91) B			
(69-80) C			
(55-68) D			
(39-54) E			
(21-38) F			
(1-20) G			
Not environmentally friendly - higher CO ₂ emissions			
England & Wales		EU Directive 2002/91/EC	



Under the Property Misdescriptions Act 1991 we make every effort to ensure our sales details are accurate but they are a general outline and do not constitute any part of an offer or contract. Any services, equipment and fittings have not been tested and no warranty can be given as to their condition. We strongly recommend that all the information provided be verified by your advisors and in particular, measurements required for a specific purpose such as fitted furniture or carpets. Please tell us if you have any problems and members of our branches will help either over the phone or in person. A copy of our complaints procedure is available on request. The details are issued on the strict understanding that any negotiations in respect of the property named herein are conducted through Aspire Estate Agents.