



Thornhill Road, KT6

£499,950

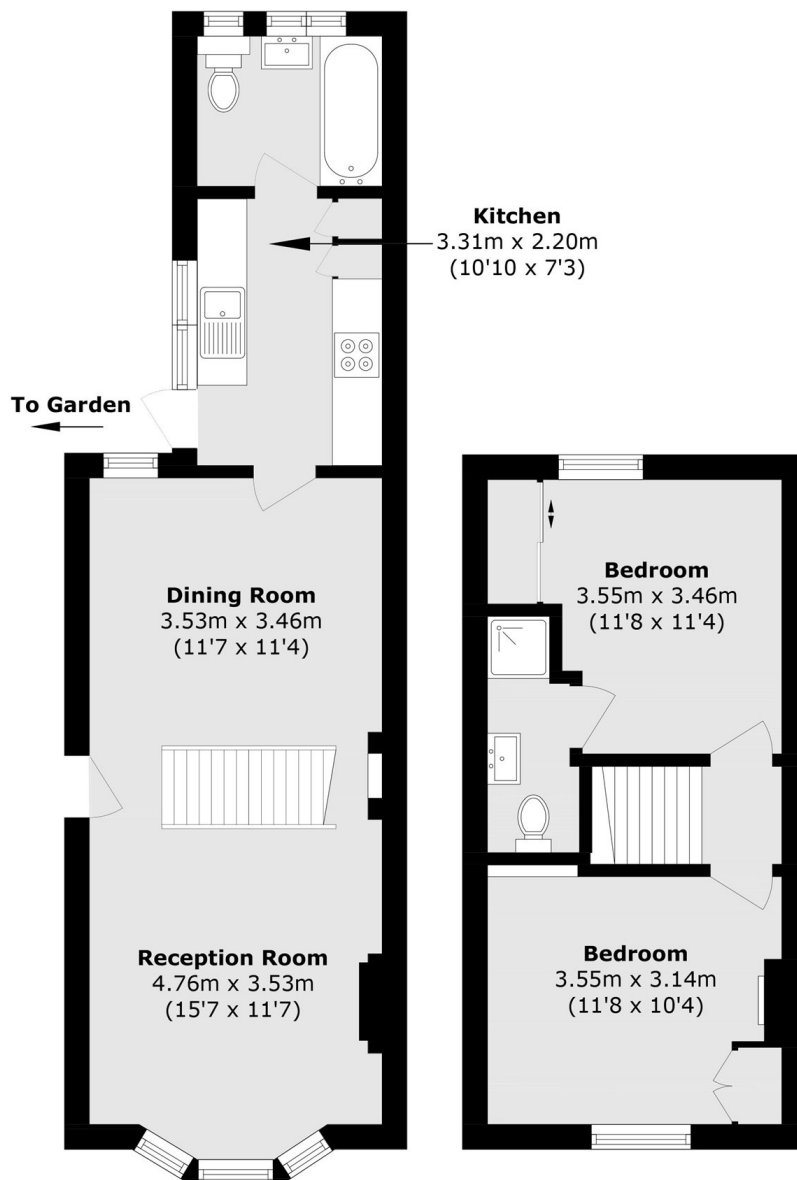
A bay fronted Victorian two bedroom semi detached cottage, with a double reception room, modern kitchen, two double bedrooms, a family bathroom and an en-suite shower room. This pretty period property further benefits from a good sized garden, scope to extend further (STPP) and no onward chain.

Thornhill Road is a peaceful residential road, approximately a mile away from both Surbiton and Tolworth town centres with their mainline train stations and popular high streets, and close to great schools.

Features

- Victorian Cottage
- Two Double Bedrooms
- Two Bathrooms
- Modern Kitchen
- Large Garden
- No Onward Chain

Thornhill Road, Surbiton, KT6



Ground Floor

First Floor

Total area (approx.): 67.7 sq. m (728.7 sq. ft)