



A GOLDSTONE PRIVATE SALE

Cobham House

A two-bedroom apartment in Kidbrooke Village

£450,000

LEASEHOLD · 2 BEDROOMS · 1 BATHROOM · 682 SQ FT

THE RESIDENCE

Cobham House, SE3



Goldstone is delighted to present this bright and beautifully presented two-bedroom apartment, occupying a fifth-floor position within Cobham House on Pegler Square, in the highly regarded, Berkeley-built Kidbrooke Village development. Arranged over approximately 682 sq ft with two double bedrooms, a private balcony and high-quality finishes throughout, the apartment sits moments from Kidbrooke Station and the landscaped green open spaces that define this award-winning neighbourhood.

OVERVIEW

A bright and elegant home

The apartment opens into a spacious open-plan living, dining and kitchen area, filled with natural light and opening directly onto a private balcony.

BEDROOMS

2

BATHROOMS

1

INTERIOR

682 sq ft

TENURE

Leasehold

A full range of integrated appliances, sleek handleless cabinetry and stone worktops feature in the kitchen, while engineered wood flooring runs through the living area. Both double bedrooms are well-proportioned and benefit from fitted storage, complemented by a contemporary bathroom and a separate utility room.



Open-plan living, dining and kitchen



Kitchen with integrated appliances

INTERIORS

Gallery

A selection of interior views from across the apartment.



Principal bedroom with fitted wardrobes



Second double bedroom



Fitted bedroom storage



Contemporary bathroom

AT A GLANCE

Key features

- Two-bedroom fifth-floor apartment with lift access
- Approx. 682 sq ft / 63.37 sq m internal area
- Private balcony off the open-plan living area
- Spacious open-plan living, dining and kitchen
- Two well-proportioned double bedrooms
- Contemporary bathroom with bath and overhead shower
- Separate utility room
- Floor-to-ceiling windows and excellent natural light
- Integrated kitchen with stone worktops
- Engineered wood flooring to living area
- Within the Berkeley-built Kidbrooke Village
- Kidbrooke Station (Zone 3) – approx. 16 mins to London Bridge

THE VILLAGE

Life in Kidbrooke Village

Kidbrooke Village is one of South East London's most successful regeneration developments, built by Berkeley across acres of landscaped parkland, water features and open green space. Pegler Square forms its vibrant centre, with a Sainsbury's, independent cafés, restaurants and everyday amenities on the doorstep, while Cator Park and the Tarn nature reserve offer extensive walking and outdoor space. Kidbrooke Station sits directly on Pegler Square, providing fast and frequent Southeastern services into Central London – reaching London Bridge in as little as 16 minutes, with onward connections to Charing Cross and Cannon Street. Blackheath, Greenwich and Westcombe Park are all close by.

ACCOMMODATION

The apartment

OPEN-PLAN LIVING, DINING & KITCHEN

A spacious open-plan reception of approximately 18'8" x 14'3" (5.69m x 4.34m) with floor-to-ceiling windows and sliding doors opening directly onto the private balcony. The kitchen is finished with handleless cabinetry, stone worktops and integrated appliances.

PRINCIPAL BEDROOM

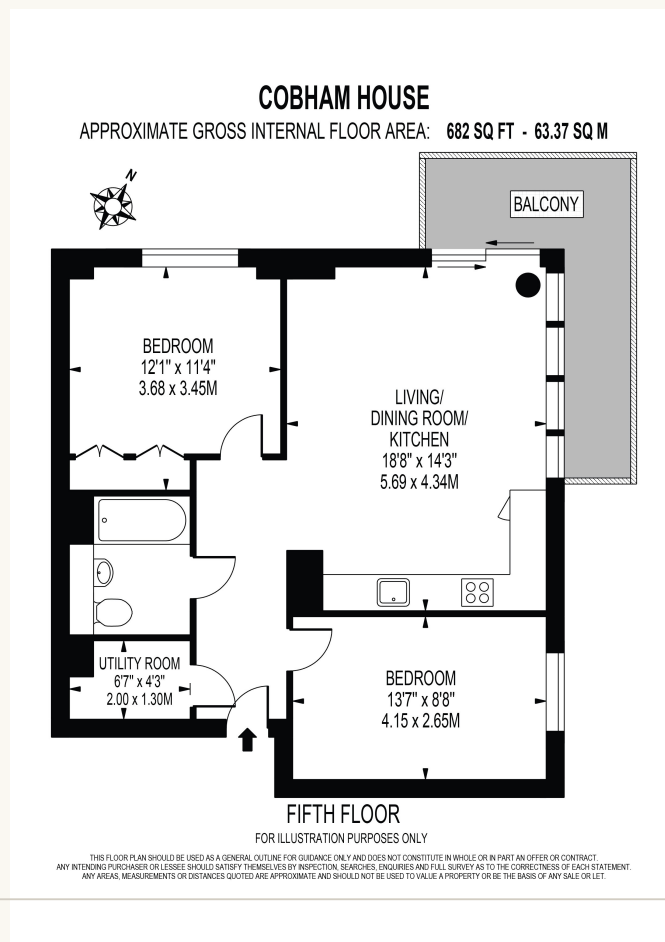
A well-proportioned double bedroom of approximately 12'1" x 11'4" (3.68m x 3.45m) with fitted wardrobes and quality carpet.

SECOND BEDROOM

A second double bedroom of approximately 13'7" x 8'8" (4.15m x 2.65m) – ideal as a guest room, child’s room or home office.

BATHROOM & UTILITY

A contemporary, fully tiled bathroom with bath, overhead shower and heated towel rail, plus a separate utility room with space and plumbing for a washer/dryer.



PRACTICAL

The essentials

Tenure	Leasehold
Interior	682 sq ft / 63.37 sq m
Bedrooms	2
Bathrooms	1
Outdoor	Private balcony
Local authority	Royal Borough of Greenwich
Council tax	Available on request
EPC	Available on request
Price	£450,000

OUTDOOR

Private balcony



Living area with sliding doors to the private balcony



A GOLDSTONE PRIVATE SALE

We would be delighted to tell you more

To arrange a private viewing of Cobham House, please contact Goldstone Global Ltd at the details below.

GOLDSTONE GLOBAL LTD

Contact Matthiew Meng

Telephone 07864 314 020

Email matthiew.meng@thegoldstone.co.uk

Office Floor 6, 29-30 Cornhill, City of London, EC3V 3ND, UK

These particulars are prepared as a general guide. They do not constitute, nor form part of, any offer or contract. Areas, measurements and distances are approximate. Photographs, plans and descriptions are for illustration only. Prospective purchasers are advised to verify all matters before committing to a transaction.
