



Guide Price

£725,000

Freehold

4x  2x  1x 

Valley Lane,

Culverstone, Kent, DA13

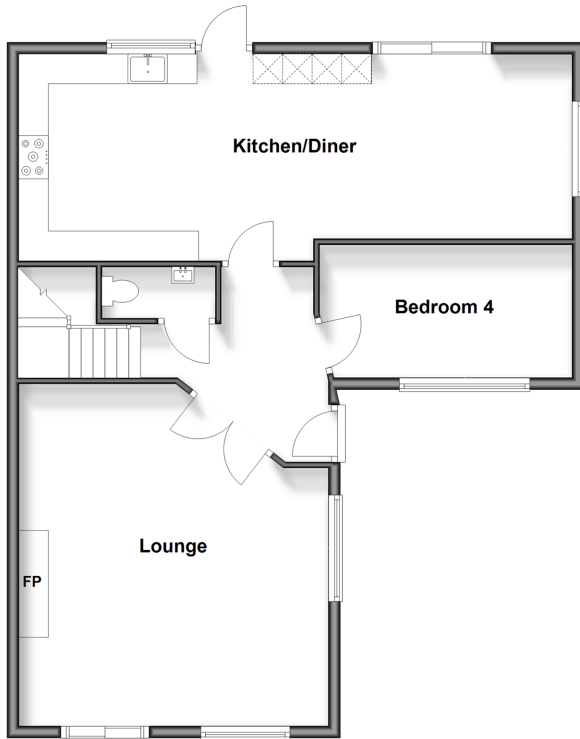
OVER 60?

Secure this property
for up to **59% less!**

Wards
Helping you move forwards

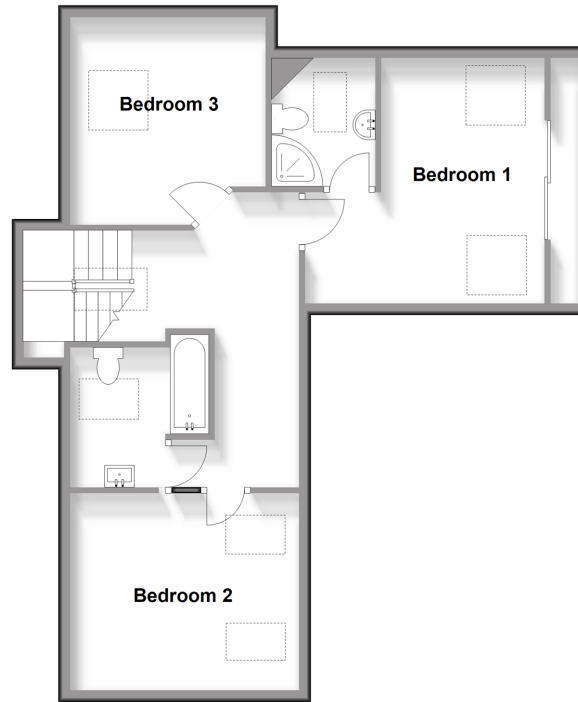
Ground Floor

Approx. 81.6 sq. metres (877.9 sq. feet)



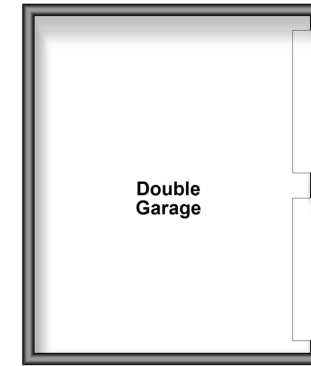
First Floor

Approx. 64.4 sq. metres (693.7 sq. feet)



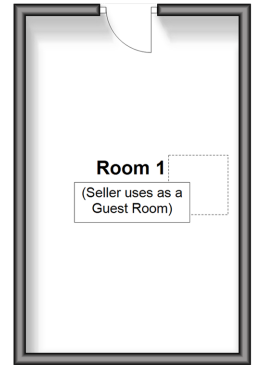
Outbuilding

Approx. 26.4 sq. metres (284.0 sq. feet)



Outbuilding First Floor

Approx. 20.4 sq. metres (219.3 sq. feet)



Accommodation

GROUND FLOOR

Hallway

Cloakroom: 6'4 x 2'5 (1.93m x 0.74m)

Lounge: 18'10 x 17'2 (5.74m x 5.24m)

Kitchen/Diner: 30'7 x 11'6 (9.33m x 3.51m)

Bedroom 4: 13'10 x 7'5 (4.22m x 2.26m)

FIRST FLOOR

Landing

Bedroom 1: 15'3 x 13'5 (4.65m x 4.09m)

Ensuite Shower Room: 7'1 x 5'9 (2.16m x 1.75m)

Bedroom 2: 12'9 x 10'11 (3.89m x 3.33m)

Bedroom 3: 11'7 x 10'10 (3.53m x 3.30m)

Bathroom: 7'7 x 7'7 (2.31m x 2.31m)

OUTBUILDING

Double Garage

OUTBUILDING FIRST FLOOR

Room 1 (uses as Guest Room): 17'11 x 11'11 (5.46m x 3.63m)

OUTSIDE

Car Port

Driveway

Front Garden

Rear Garden

Garden Bar

Hot Tub



Main features

- Electric gated driveway with double garage
- Offered to the market with no onward chain
- Great sized plot with hot tub and a garden bar
- Intercom and CCTV installed for sense of security in a private semi-rural location
- Easy access to local amenities and main road links

Nearest Schools

Primary Schools: Vigo Village School 0.5 miles, Culverstone Green Primary 0.6 miles, Trottiscliffe C of E Primary 1.5 miles
Secondary Schools: Meopham School 2.0 miles, Helen Allison School 2.5 miles, Grange Park School 3.3 miles

Transport Information

Train Stations: Sole Street 3.1 miles, Meopham 3.2 miles, Halling 3.7 miles

Address

Valley Lane, Culverstone, Kent, DA13

Directions

For directions to this property please contact us.



Wards
Helping you move forwards

Call Meopham Branch 01474 813100 ■ wardsofkent.co.uk



- Legal advice should be taken to verify fixtures/fittings, planning, alterations and/or lease details
- Appliances & services are untested, dimensions are approximate and floor plans are not to scale
- Through a Homewise Home For Life Plan people aged 60+ can secure this property for up to 50% less, by purchasing a Lifetime Lease

EPC RATING

CURRENT:	POTENTIAL:
D(60)	B(81)

13324696/20251211/TT/KD