



**Hayward  
Tod**

**4 Bed Detached Dormer Bungalow | Rockwood | Plains Road | Wetheral | CA4 8JY**

**£545,000**





Fabulous near half acre garden with detached house ready to be modernised and improved by the new owners. Great location within a desirable village with amenities, convenient for Carlisle, the M6 motorway and the A69.

#### ACCOMMODATION SUMMARY

Vestibule hall and stairs | Large dining room into sitting room | Generous kitchen | Two double bedrooms | Bathroom | First floor spacious landing | Balcony | Bedrooms three and four | Bathroom | Shower room | Outstanding private gardens circa 0.46 acres | Rare opportunity | Council Tax Band - F | EPC rating D | All mains services | Gas central heating | Freehold

#### APPROXIMATE MILEAGES

Village centre 0.3 | Carlisle Golf Club 2.2 | M6 J43 2.7, J42 2.9 | Central Carlisle - West Coast Mainline Station 4.7 | Brampton 6.4 | Solway Coast AONB - Bowness on Solway 17.7 | Lake District National Park - Caldbeck 16, Ullswater Pooley Bridge 23.7 | North Pennines AONB - Alston 25 | Newcastle International Airport 52.8 | Edinburgh 103

#### WHY WETHERAL?

Wetheral is one of our region's most desirable and sought after villages enjoying a broad range of excellent amenities located on or around the village green. These include a village shop and Post Office, popular coffee shop, Fantails Restaurant, Wheatsheaf Pub, Ancient church and priory dating to circa 1100, Crown Hotel with public bar, restaurant and leisure club with pool. Train station serving Newcastle and Carlisle. Bus service. Wetheral has an impressive Victorian Viaduct crossing high above the River Eden and beautiful river and countryside walks on the door step. Convenient for main road - A69, M6 J42 and J43. Easy access for the Eden Valley, Hadrian's Wall, Lake District and Scottish Borders. The historic City of Carlisle is just 10 minutes by car where you will find a thriving café culture and a superb range of restaurants, social, leisure and retail



opportunities. The West Coast Mainline Station serves London direct in around 3 hours 20 minutes and many other large centres including Glasgow, Manchester (and airport), Birmingham (and airport) and Cross Country to Edinburgh in around 1 hour 20 minutes.

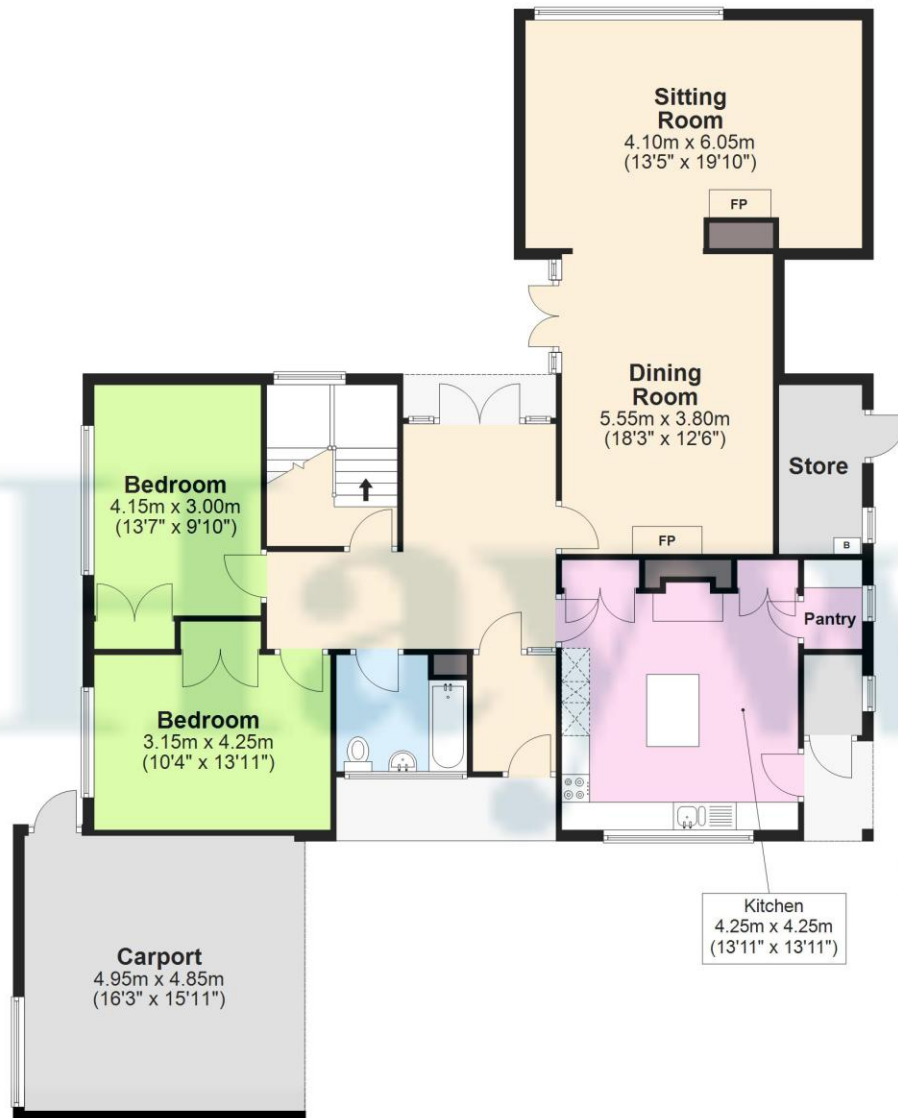
### DESCRIPTION

Rockwood is a detached home ready for a new lease of life. It is rather special as it occupies a large, mature, and private garden on a desirable residential road in our region's most sought after village. At 0.46 acres it is very rare indeed in the opportunities it offers. For those seeking a large premium site the house could be extended and modernised to provide a striking contemporary property that can take full advantage of the wonderful private south-west facing gardens. The property currently provides four bedrooms, two bathrooms and a large open plan living space alongside a spacious kitchen. The current configuration also provides ample single level living if so required.



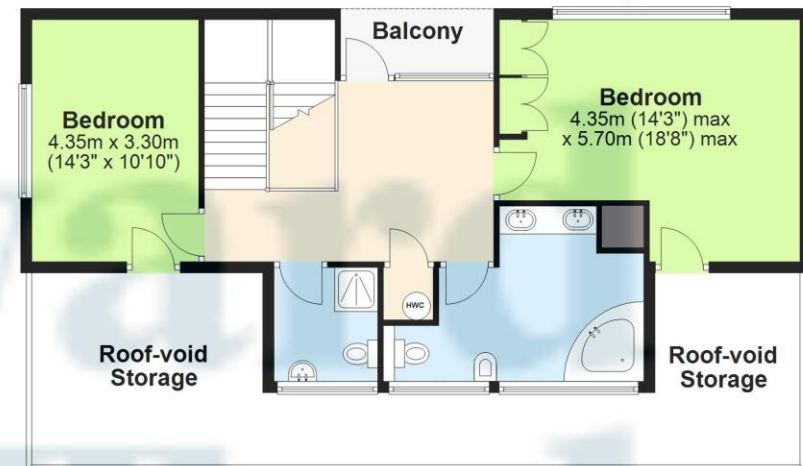
## Ground Floor

Approx. 136.1 sq. metres (1464.8 sq. feet)



## First Floor

Approx. 77.2 sq. metres (830.9 sq. feet)



Total area: approx. 213.3 sq. metres (2295.7 sq. feet)

## Contact

6 Paternoster Row,  
Carlisle Cumbria CA3 8TT

01228 810 300  
info@haywardtod.co.uk  
haywardtod.co.uk

## Agents note

Whilst every care has been taken to prepare these sales particulars, they are for guidance purposes only. All measurements are

approximate and are for general guidance purposes only and whilst every care has been taken to ensure their accuracy, they should not be relied upon and potential buyers are advised to recheck the measurements.