



## 4 Malthouse Cottages Chidham Lane, Chidham - PO18 8TH

Guide Price £325,000 Freehold - CHAIN FREE



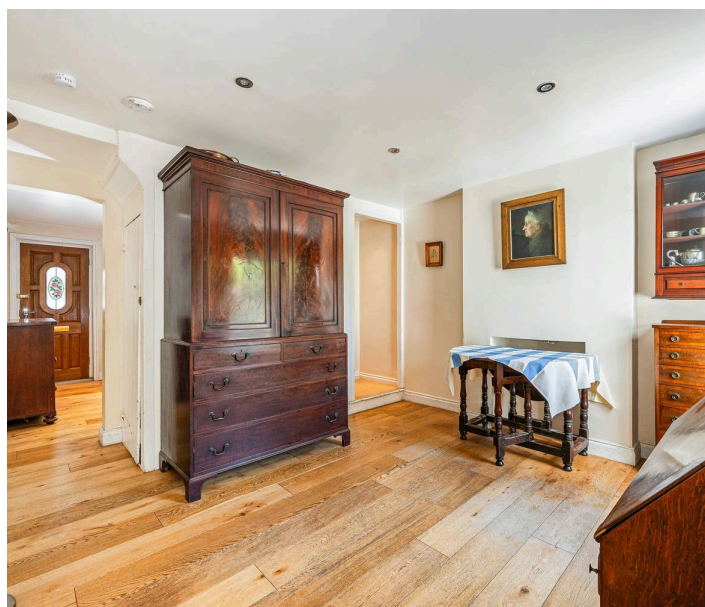
STRIDE & SON

## 4 Malthouse Cottages

Chidham Lane, Chichester

A charming 2-bedroom end of terrace cottage in need of some internal updating with off-road parking to the front for two vehicles and side access to a generous west-facing rear garden.

- End of terrace character cottage
- Off-road parking to the front for two vehicles
- Useful side access leading directly to the rear garden
- Two reception rooms with period proportions
- Sitting room featuring wood-burning stove
- Two double bedrooms on the first floor & shower room
- West-facing rear garden enjoying afternoon and evening sun
- Large timber shed and additional outside WC
- Loft storage space
- Excellent potential for internal updating and personalisation





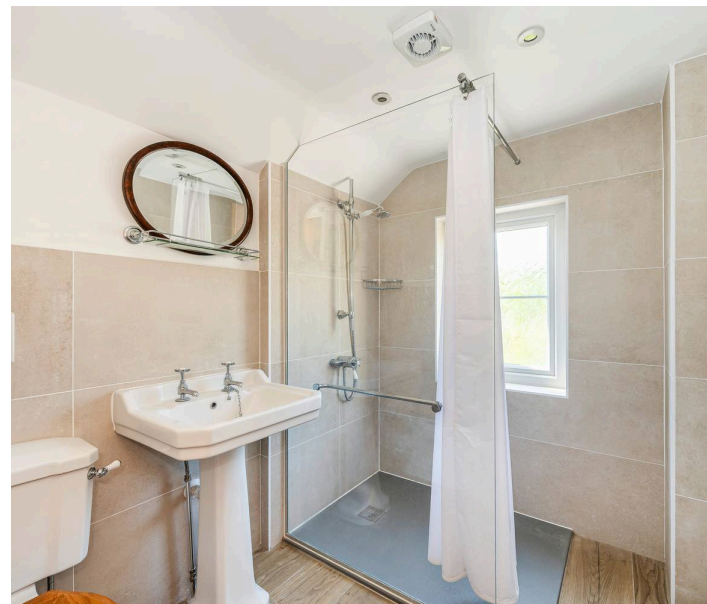
## ACCOMMODATION:

The ground floor is centred around two interconnecting reception rooms. The sitting room to the front features exposed timber flooring and a characterful wood-burning stove set within a traditional fireplace. This leads through to a dining room, also with wooden flooring, which enjoys a pleasant outlook towards the garden and provides good space for everyday dining and entertaining.

Beyond the dining room is a galley-style kitchen, fitted with a range of units and benefitting from natural light and direct access to the garden. While functional, both areas would now benefit from modernisation, offering an excellent opportunity to reconfigure or refit to individual taste.

Upstairs, the first floor provides two well-proportioned double bedrooms and a good sized shower room with shower cubicle, low level WC and wash hand basin. The principal bedroom overlooks the front of the house whilst the second bedroom sits to the rear and enjoys views across the garden, both rooms retain period features.

A particular highlight of the property is the west-facing rear garden, extending to a notably generous length. Laid mainly to lawn with established planting, raised beds and mature hedging, the garden offers excellent privacy and afternoon and evening sun. To the rear sits a substantial timber shed, providing excellent storage or workshop potential, along with an additional outside WC.



## LOCATION:

The pretty hamlet of Chidham sits on the edge of the upper reaches of Chichester Harbour and lies in the centre of its own peninsula jutting out into Chichester Harbour with Thorney Channel to the west and Bosham Channel to the east.

The property is set towards the top of Chidham Lane with easy access to bus stops providing good links to Emsworth & Chichester, both of which offer a wide range of shopping facilities and railway links with connections by way of Chichester to London Victoria and via Havant to London Waterloo. Access to the A27 via Emsworth also provides easy access by car by way of the A3. Chidham also has its own parish church and pub with a sailing club at Cobnor Point close by.

Located just to the north of Chichester is the Goodwood Estate, which is famous for its many sporting event days including the much-celebrated Festival of Speed and Goodwood Revival for motor racing enthusiasts, and a season of horse racing including the Qatar Festival.

**INFORMATION: Services: All main | Local Authority: Chichester District Council | Council Tax Band: Band C | EPC Rating: Band D**

**what3words: ///crimson.eggplants.taped**







STRIDE & SON

# 4 Malthouse Cottages, Chidham Lane, PO18 8TH

Approximate Gross Internal Area = 64.1 sq m / 690 sq ft

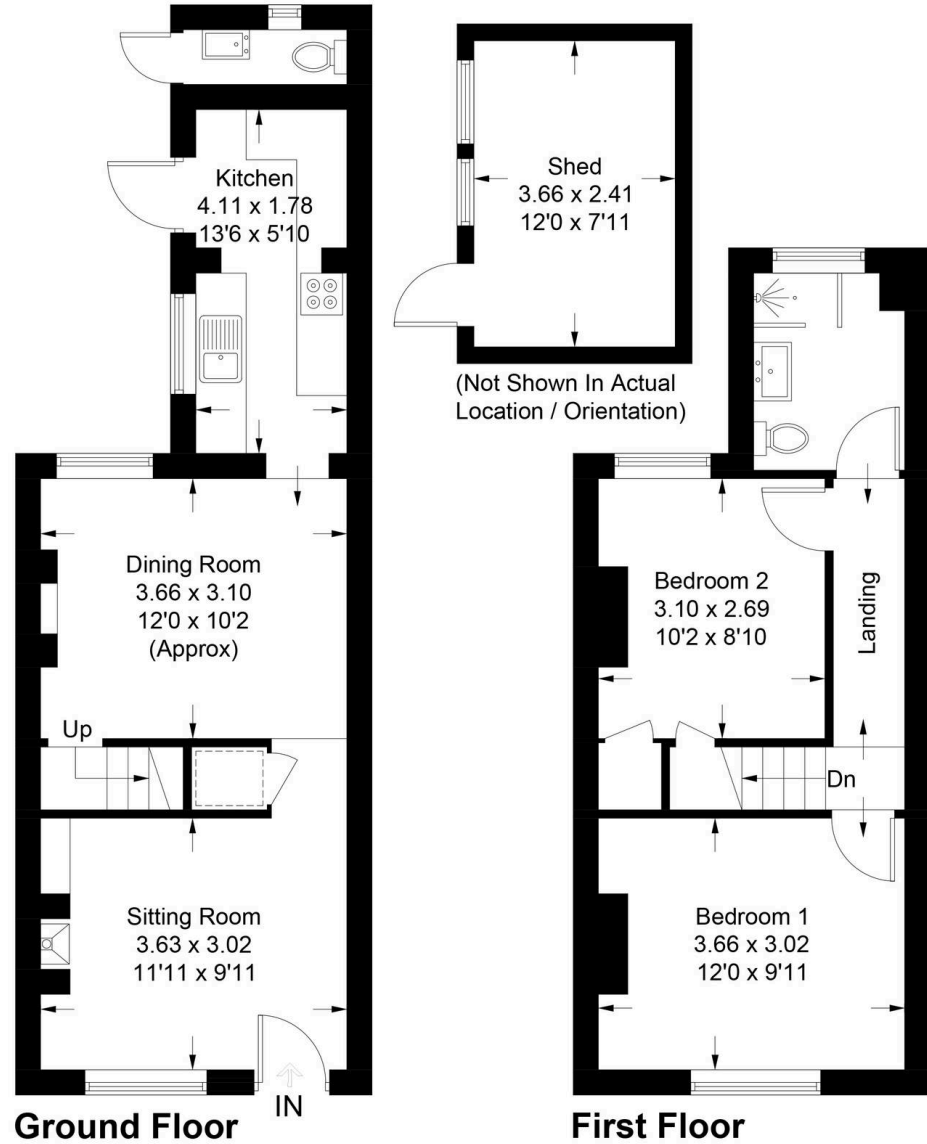
Shed & Outside Toilet = 10.0 sq m / 108 sq ft

Total = 74.1 sq m / 798 sq ft



Produced for Stride & Sons Estate Agent.

= Reduced headroom below 1.5m / 5'0



Whilst every attempt has been made to ensure the accuracy of the floor plan contained here, measurements of doors, windows, rooms and any other items are approximate and no responsibility is taken for any error, omission, or misstatement. This plan is for illustrative purposes only and should be used as such by any prospective purchaser. Created by Emzo Marketing 2026. (ID1295804)



## Stride & Son

37 South Street - PO19 1EL

01243 782626

[contact@strideandson.co.uk](mailto:contact@strideandson.co.uk)

[www.strideandson.co.uk](http://www.strideandson.co.uk)



**STRIDE & SON**  
ESTATE AGENTS  
CHARTERED SURVEYORS

This brochure is for guidance only and does not form part of any contract. While every effort is made to ensure accuracy, measurements, descriptions and details are approximate. Interested parties should carry out their own checks and inspections before making any decisions. Fixtures, fittings and appliances have not been tested and no warranty is given on their condition.



STRIDE & SON

