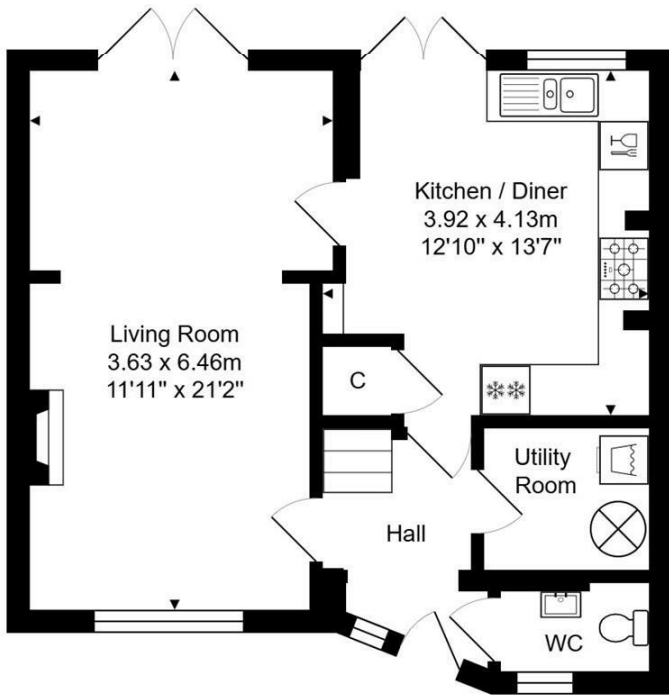




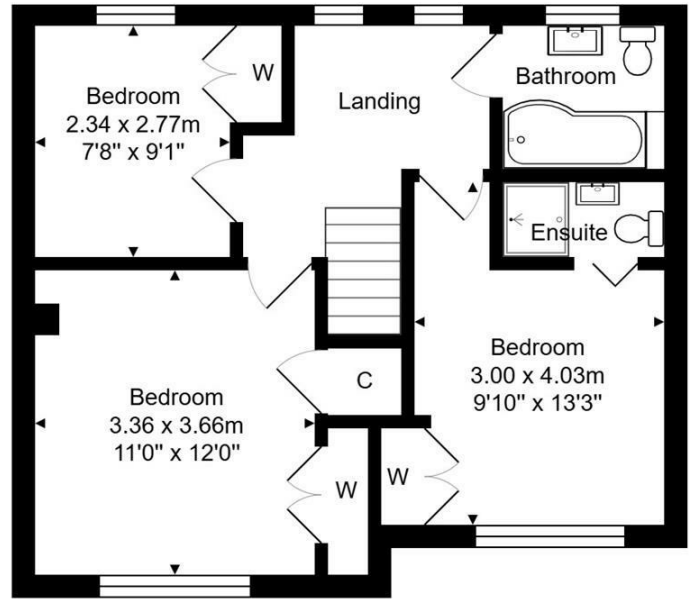
**9 Curtis Orchard
Melksham, SN12 8PX**

Guide Price £290,000

A well-presented, three bedroom mid-terrace family home in the popular village of Broughton Gifford with driveway parking.



Ground Floor
Area: 50.3 m² ... 541 ft²



First Floor
Area: 47.8 m² ... 514 ft²

Total Area: 98.0 m² ... 1055 ft²



Whilst every attempt has been made to ensure the accuracy of the floorplan contained here, measurements of doors, windows, rooms and any other items are approximate and no responsibility is taken for any error, omission or mis-statement. This plan is purely for illustrative purposes only and should be used as such by any prospective purchaser.
www.epcassessments.co.uk



Energy Efficiency Rating		Current	Potential
Very energy efficient - lower running costs	(92 plus) A		
(81-91) B			
(69-80) C			
(55-68) D			
(39-54) E			
(21-38) F			
(1-20) G			
Not energy efficient - higher running costs			
England & Wales			
	EU Directive 2002/91/EC		

Environmental Impact (CO ₂) Rating		Current	Potential
Very environmentally friendly - lower CO ₂ emissions	(92 plus) A		
(81-91) B			
(69-80) C			
(55-68) D			
(39-54) E			
(21-38) F			
(1-20) G			
Not environmentally friendly - higher CO ₂ emissions			
England & Wales			
	EU Directive 2002/91/EC		